

## Quick Start Guide



Pour la traduction française, voir le CD  
Para traducción en castellano, vea el CD  
Per la traduzione in italiano, vedere il CD  
Für die deutsche Übersetzung, siehe die CD

# 1

## FIRST INSTALL YOUR BATTERY

EL-USB-1, EL-USB-1-LCD, EL-USB-2, EL-USB-2+, EL-USB-2-LCD, EL-USB-2-LCD+, EL-USB-3, EL-USB-4, EL-USB-5, EL-USB-CO, EL-USB-CO300, EL-USB-TC, EL-USB-TC-LCD

Before using the data logger you will need to insert the 3.6V 1/2AA battery provided, following the instructions below. Replacement batteries available from [www.lascarelectronics.com](http://www.lascarelectronics.com), PN: BAT 3V6 1/2AA.



### EL-USB-1 PRO

Before using the data logger you will need to insert the 3.6V 2/3AA High Temperature battery provided, following the instructions below. Replacement batteries available from [www.lascarelectronics.com](http://www.lascarelectronics.com), PN: BAT 3V6 2/3AA H TEMP.



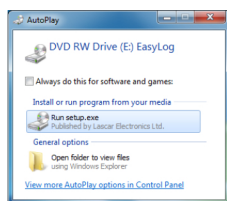
### EL-USB-1-RCG BATTERY IS PREINSTALLED

To charge the battery connect to USB port until green LED shows.

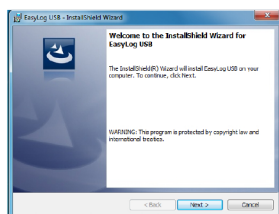
# 2

## THEN INSTALL YOUR SOFTWARE & USB DRIVER

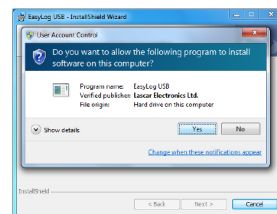
Windows™ 2000/XP/VISTA/7



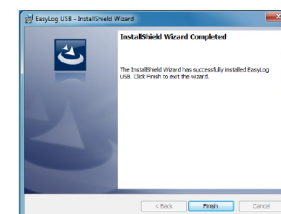
1. Insert the EL-USB-USB CD into the CD drive of your computer. If the CD does not automatically load, navigate to the CD and double click "Setup"



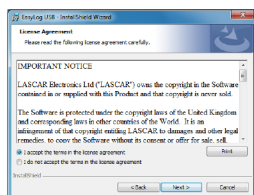
2. Click "Next"



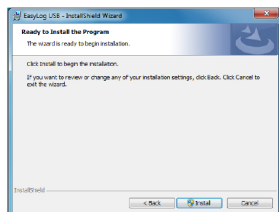
5. Click "Yes"



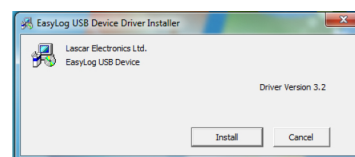
6. Click "Finish"



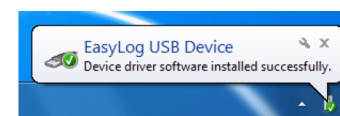
3. Read the "IMPORTANT NOTICE", select "I agree" and "Next"



4. Click "Install"



7. Click "Install"

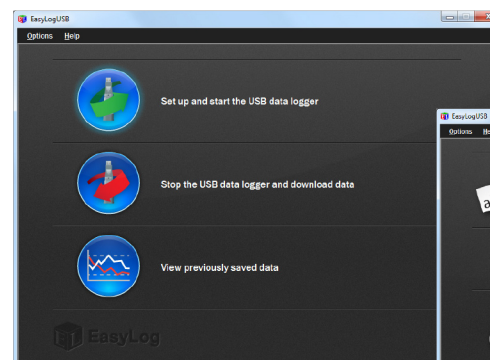


8. You have successfully installed the necessary software and driver for your EL-USB data logger. An "EasyLog USB" icon will be placed on your desktop.

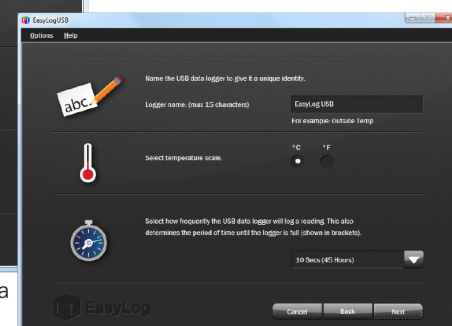
# 3

## YOUR DATA LOGGER IS READY FOR USE

- Ensure the battery is correctly installed.
- Insert the data logger into an available USB port on your PC.
- Double click on the EasyLog USB icon on your Windows™ desktop. This will load the configuration software. Setup the data logger for a new log, download a data logger that has been recording, view previously saved data in graph format and check the current status of the attached data logger (including the serial number).
- When setup is complete, the data logger should be removed from the USB port to begin recording. If you would like advice on how best to use the data logger for a particular application, please contact your nearest Lascar representative.
- Do not leave your data logger in the USB port as this will cause some of the battery capacity to be lost** (with the exception of EL-USB-1-RCG; see '1. First Install Your Battery' for further information).



Set-up, stop or view previously saved data



Name your logger and select a sample rate

SPECIFICATIONS

Part No	Function	Range	Accuracy (overall error)		Readings	Battery	Battery Life*
			Typ.	Max.			
WD7TEM009	Temperature	-35 to +80 °C (-31 to +176 °F)	±1°C (±2°F)		16,382	3.6V ½AA	1 year
WD7TEM010	Temperature with LCD	-35 to +80 °C (-31 to +176 °F)	±0.5°C (±1°F)	±1.5°C (±3°F)	16,382	3.6V ½AA	1 year
EL-USB-1-PRO	Extended Temperature	-40 to +125 °C (-40 to +257 °F)	±0.2°C (±0.4°F)		32,510	3.6V ¾AA	3 years
EL-USB-1-RCG	Temperature with rechargeable battery	-20 to +60 °C (-4 to +140 °F)	±1°C (±2°F)		32,510	Lithium Ion	1 month (rechargeable)
EL-USB-2	Temperature, Humidity & Dew Point	-35 to +80 °C (-31 to +176 °F)	±0.5°C (±1°F)	±2°C (±4°F)	16,382	3.6V ½AA	1 year
		0 to 100%RH	±3%RH	±5.0%RH	16,382		
EL-USB-2+	Increased Accuracy Temperature, Humidity & Dew Point	-35 to +80 °C (-31 to +176 °F)	±0.3°C (±0.6°F)	±1.5°C (±3°F)	16,382	3.6V ½AA	1 year
		0 to 100%RH	±2.0%RH	±4.0%RH	16,382		
EL-USB-2-LCD	Temperature, Humidity and Dew Point with LCD	-35 to +80 °C (-31 to +176 °F)	±0.5°C (±1°F)	±2°C (±4°F)	16,382	3.6V ½AA	1 year
		0 to 100%RH	±3.0%RH	±5.0%RH	16,382		
EL-USB-2-LCD+	Increased Accuracy Temperature, Humidity and Dew Point with LCD	-35 to +80 °C (-31 to +176 °F)	±0.3°C (±0.6°F)	±1.5°C (±3°F)	16,382	3.6V ½AA	1 year
		0 to 100%RH	±2.0%RH	±4.0%RH	16,382		
EL-USB-3	Voltage	0 to 30V d.c.	±1%		32,510	3.6V ½AA	1 year
EL-USB-4	Current Loop	4 to 20mA	±1%		32,510	3.6V ½AA	1 year
EL-USB-5	Counter, Event & State	N/A		±3 secs/24 hrs	32,510	3.6V ½AA	1 year
EL-USB-C0	Carbon Monoxide	0 to 1000ppm <b>NOT A LIFE SAVING DEVICE</b>	±6ppm		32,510	3.6V ½AA	3 months
EL-USB-C0300	Carbon Monoxide	0 to 300ppm <b>NOT A LIFE SAVING DEVICE</b>	±4ppm		32,510	3.6V ½AA	3 months
WD7TEM011	Thermocouple (J, K and T-type) K-type probe included	-200 to +1350°C (-328 to +2462°F) (K-type) -200 to +1190°C (-328 to +2174°F) (J-type) -200 to +390°C (-328 to +734°F) (T-type)	±1°C (±2°F)	±2°C (±4°F)	32,510	3.6V ½AA	6 months
WD7TEM012	Thermocouple with LCD (J, K and T-type) K-type probe included	-200 to +1350°C (-328 to +2462°F) (K-type) -200 to +1190°C (-328 to +2174°F) (J-type) -200 to +390°C (-328 to +734°F) (T-type)	±1°C (±2°F)	±2°C (±4°F)	32,510	3.6V ½AA	6 months

\*Depending on logging rate, ambient temperature, and use of alarm LED

LED FLASHING MODES

EL-USB-1	EL-USB-2, EL-USB-2+, EL-USB-2-LCD EL-USB-2-LCD+	EL-USB-1-LCD, EL-USB-1-RCG, EL-USB-3, EL-USB-4, EL-USB-TC & EL-USB-TC-LCD
<div><div>♂</div><div>Green double flash Delayed start</div><div>♂</div><div>Red double flash High alarm</div><div>♂♂</div><div>Orange double/single flash Memory full</div><div>♂</div><div>Green single flash Logging, no alarm</div><div>♂</div><div>Red single flash Low alarm</div><div>♂</div><div>Orange single flash every 60 sec Low battery</div><div>○</div><div>No LEDs flash Logger stopped or battery empty</div></div>	<div><div>♂♂♂</div><div>Green triple flash Logger full, no alarm on the channel</div><div>♂♂♂</div><div>Red triple flash Logger full, alarm on the channel</div><div>♂</div><div>Green double flash Delayed start</div><div>♂</div><div>Green single flash Logging, no alarm</div><div>♂</div><div>Red single flash Logging, low alarm on the channel</div><div>♂</div><div>Red double flash Logging, high alarm on the channel</div><div>○</div><div>No LEDs flash Logger stopped or battery empty</div><div>♂♂</div><div>Dual Red Flash Battery low</div></div>	<div><div>♂</div><div>Green double flash Every 20 seconds: logger full, no alarm</div><div>♂</div><div>Green single flash Every 30 seconds: delayed start Every 20 seconds: low battery, logging, no alarm Every 10 seconds: logging, no alarm</div><div>♂♂</div><div>Red/ Green single flash Every 20 seconds: logger full, last value equal to or exceeds the low or high alarm</div><div>♂</div><div>Red double flash Every 10 seconds: logging, high alarm Every 20 seconds: logging, high alarm, low battery</div><div>♂</div><div>Red single flash Every 10 seconds: logging, low alarm Every 20 seconds: logging, low alarm, low battery</div><div>○</div><div>No LEDs flash LEDs disabled during configuration to save battery power and increase logging life /logger stopped / battery empty</div></div>
EL-USB-5		
<div><div>♂</div><div>Green single flash Every 10 seconds: normal logging</div><div>♂</div><div>Green single flash Every 20 seconds: low battery</div></div>	<div><div>♂♂</div><div>Green double flash Every 20 seconds: memory full</div><div>♂</div><div>Red single flash Event/State change/Count recorded</div></div>	

LCD INDICATORS

(EL-USB-1-LCD, EL-USB-2-LCD, EL-USB-2-LCD+ AND EL-USB-TC-LCD ONLY)

DISPLAY AND STATUS FUNCTIONS	LCD INDICATION		
<div>EL-USB-1-LCD, EL-USB-2-LCD &amp; EL-USB-2-LCD+</div> <div><div>Maximum logged value symbol</div><div>Relative Humidity symbol*</div><div>Negative symbol</div><div>Minimum logged value symbol</div><div>Reading</div><div>Temperature scale</div></div> <div>*ELUSB-2-LCD &amp; EL-USB-2-LCD+ only</div>	<div>EL-USB-TC-LCD</div> <div><div>Temperature scale symbols</div></div> <div><div>Maximum/Minimum logged value symbol</div></div>		
	Display	Logger Status	Explanation
	d5	Delayed Start	This is shown when the logger is set to start at a specific data and time*
	P5	Push to Start	This is shown when the logger is setup for "Push to start" logging
	109	Logging	This is shown when the logger is running in "LCD off" mode, and the button is pressed. The display clears again after three seconds
	---	Stopped	If the logger has not been set to log and the button is pressed, three dashes are displayed for three seconds
* If the logger is set to "LCD off" or "LCD on for 30 seconds" mode, then this will only be shown after the button is pressed. Otherwise the display will remain blank.			

Woodley Equipment Company Ltd

Locomotive House  
Locomotive Industrial Estate  
Horwich, Bolton, BL6 5UE  
Tel: +44 (0) 8456 77001  
Fax: +44(0) 8456 777 002

Woodley Equipment Company Inc

Suite 104, 65 South Street  
Hopkinton, MA 01748  
Tel: 1-800-471-9200 / 1-508-625-1692  
Fax: 1-508-625-1721  
Email: enquiries@woodleyequipment.com

WWW.WOODLEYEQUIPMENT.COM