

CLINISPIN 642E horizon



Programmable
Run Time is Factory
Preset to
10
MINUTES
See Page 5

Operator's Manual

TABLE OF CONTENTS

Model Description	pg. 2
Supplied Equipment	pg. 2
Features	pg. 3
Specifications	pg. 3
Setup Location and Procedure	pg. 4
Front Panel Controls	pg. 5
Operation	pg. 6
Rotor Removal and Installation	pg. 7
Tube Holder Configurations	pg. 7,8
Care and Maintenance	pg. 9
Troubleshooting	pg. 10
Safety, Emergency Lid Removal	pg. 11
Calibration and Ground Testing	pg. 11
Replacement Parts	pg. 12
Available Accessories	pg. 12

WARNING:

Care should be taken when handling substances that are known to be toxic, radioactive or contaminated with pathogenic microorganisms when using this centrifuge for the safety of both the operator and service personnel. When Risk Group II materials are used, (as identified in the World Health Organization "Laboratory Bio-Safety Manual"), a Bio-Seal should be employed. More than one level of protection must be provided in the case of materials of a higher group. The use of flammable or explosive materials as well as those materials which chemically react vigorously is prohibited.

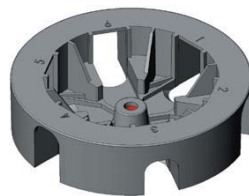
MODEL DESCRIPTION:

The Clinispin Horizon 642E is a continuous-duty, electronically-controlled horizontal centrifuge with a lid safety interlock system. The unit is controlled by an electronic push-button timer that has been preset for ten (10) minutes, for precise spin times and ease of use. Samples can be safely viewed through the transparent lid. Entry into the machine is restricted during operation by the safety interlock system. The Clinispin Horizon 642E features a lighted control panel that displays the status of the machine, easily viewable from a distance. For warranty information, turn to page 12.

SUPPLIED EQUIPMENT*:

The following items come standard with each Clinispin Horizon 642E centrifuge:

1. Operator's manual
2. One (1) six-place horizontal rotor p/n 7786021
3. Six (6) 100mm tube holders p/n 7713031
4. Six (6) 75mm tube holders p/n 7713033
5. One (1) Removable mains lead (plug type varies by country)



x 6



x 6

Optional Accessories:

- 7mm tube cushions, p/n 9150
- 250mm tube cushions, p/n 1525
- 6-Place Fixed-angle Rotor, p/n 7786047-2

* The rotor and rotor accessories are rated for a rotation frequency of 4,000 RPM.



FEATURES:

- Swing-out horizontal rotor design (patent-pending), incorporating a unique test rotor holder that produces horizontally separated samples while requiring no additional parts
- Optional fixed-angle rotor for spinning tubes up to 125mm in length
- Cool-Flow air flow design that prevents overheating of samples
- Heavy gauge steel construction for safety and durability
- Lid safety switch that prevents the centrifuge from operating unless the lid is closed and locked
- Removable rotor for easy cleaning
- Locking lid that allows entry into the centrifuge only after the rotor has completely stopped
- Brushless permanent split capacitor AC motor
- Clear lid for safe observation of samples and optical calibration of speed
- Electronically controlled timed operation, (see pg. 5)
- Push-button operation
- Indicator lights:

‘RUN’	green	-lights when power is applied to the motor
‘LOCKED’	yellow	-lights when the lid is closed and latched
‘UNLOCKED’	red	-lights when the locking system is deactivated

SPECIFICATIONS:

Nominal Speed (Horizontal):	3,800 (+/- 100) RPM
Nominal RCF (Horizontal):	2,000 (+/- 90) xg
Maximum capacity (Horizontal):	60 mL (6 x 10 mL)*
Nominal Speed (Fixed-angle):	3,800 (+/- 100) RPM
Nominal RCF (Fixed-angle):	1,770 (+/- 70) xg
Maximum capacity (Fixed-angle):	90 mL (6 x 15 mL)*
Overall Dimensions (H x W x D):	22 cm x 28 cm x 32 cm
Centrifuge Motor:	1/30 HP, p.s.c. motor
Nominal Acceleration Time:	30 seconds
Protection Breaker:	4 Amp. re-settable
Timer:	electronic, 1 to 30 minutes preset to 10 minutes, +/- 1%
Voltage Requirement:	230 Volts
Current Requirement:	1.0 Amps
Frequency:	50/60 Hz
Weight:	8.4kgs

Permitted Environmental Conditions

Ambient Temperature During Operation:	2 °C - 35 °C
Maximum Relative Air Humidity:	90%

* Maximum sample density is 1.15 grams / mL, (water density = 1.0 grams / mL)

SETUP LOCATION:

1. Unpack the centrifuge and verify that all of the supplied equipment is present.
2. Choose a setup location which meets the following criteria:
 - a) A bench top clearance height of 51 cms is required in order to open the lid.
 - b) The clearance envelope is the space around the centrifuge which is required for safety. Choose a setup location which will allow for a clearance envelope of at least 61 x 61 cms, (with the centrifuge at the center). No person or hazardous material shall be permitted in the clearance envelope during operation. The operator time within the envelope shall be limited to the time necessary for loading, unloading and centrifuge operation only.
 - c) Proper ventilation is necessary to prevent the overheating of samples as well as premature failure of the centrifuge. Choose an area which will allow unencumbered air flow.
 - d) The centrifuge is designed to secure to the operating surface by four suction feet. No adjustment is necessary for leveling the centrifuge, however, the surface should be flat and level.
 - e) **Be sure the outlet is always within reach as the mains lead is the means of emergency disconnection!**

INITIAL SETUP PROCEDURE: *If any problems are found during the initial setup procedure, refer to the troubleshooting section on page 10.*

1. Plug the female end of the mains lead into the rear of the centrifuge and then plug the male end into an approved electrical outlet. For electrical safety, the unit must always be properly grounded.
2. For safety purposes, the locking system is always activated. To deactivate the system, (in order to insert or retrieve samples), press the 'OPEN / STOP' button on the control panel. The 'UNLOCKED' indicator light should illuminate. If it does not, refer to page 10 on troubleshooting. The lid will be unlocked for 15 seconds after pushing the 'OPEN / STOP' button.
3. Turn the latch counterclockwise and open the lid.
4. Spin the rotor by hand; check for free and level rotation. If the rotor does not spin freely, refer to page 10 on troubleshooting.
5. Place the six test tube holders inside the rotor (as shown to the right), and verify that they are seated properly.
6. Close the lid. Rotate the lid knob clockwise to its complete stop position. The 'LOCKED' indicator light should be illuminated. If it is not, make sure that the lid is locked properly. The centrifuge will not run unless the lid is locked and the 'LOCKED' light is illuminated.
7. Turn the centrifuge on by pushing the 'START' button.
8. The 'RUN' indicator light will illuminate.
9. The test tube holders will slide up into the horizontal position and the unit will accelerate to full speed.
10. Listen to the sound of the centrifuge. A smooth whirring sound should be heard. If there are any loud or unusual sounds, stop the centrifuge by pushing the 'OPEN / STOP' button immediately and refer to page 10 on troubleshooting.
11. Push the 'OPEN / STOP' button. The 'RUN' indicator light should go out and the motor should slow to a stop.



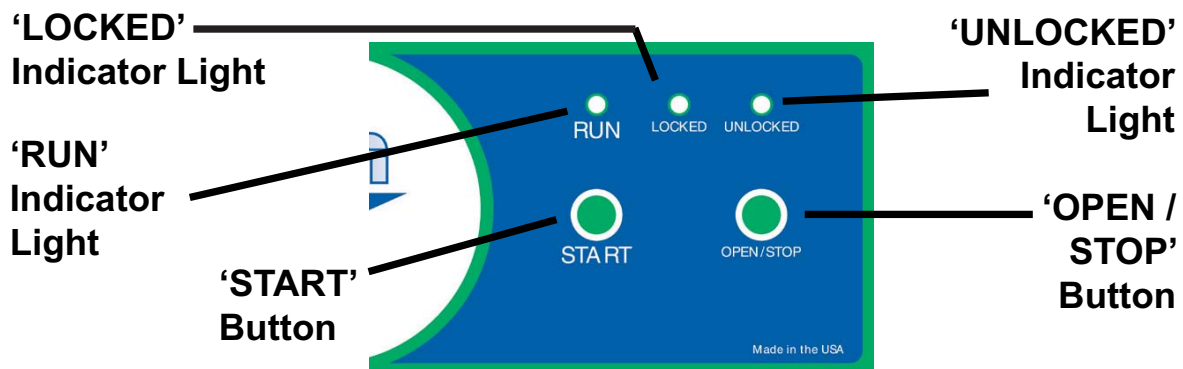
Horizontal Rotor Shown

(Continued)

12. The lid should remain locked until the rotor has nearly stopped. If the machine unlocks prematurely, contact Woodley Equipment LTD for assistance. Once the rotor has stopped, the interlock system will become disengaged for sixty (60) seconds. The 'UNLOCKED' indicator light will illuminate during this time.
13. To gain entry into the centrifuge after this period has ended, simply press the 'OPEN / STOP' button. The lid will unlock for fifteen (15) additional seconds.

After the centrifuge has passed this procedure it is ready for operation.

CONTROL PANEL:



'RUN'	Lights up when the machine is in operation, (power is being applied to the motor).	'START'	Begins a new run, (the lid must be closed, see pg. 6).
'LOCKED'	Lights up when the lid has been closed and latched properly.	'OPEN / STOP'	Allows for access into the rotor chamber by disengaging the locking mechanism. Entry is only permitted when the rotor is stopped. Pressing this button during operation will terminate the run and unlock the lid after the rotor has come to a stop.
'UNLOCKED'	Lights up to indicate that the locking mechanism has been deactivated, allowing access to the rotor chamber.		

To verify the preset time: NOTE: Your centrifuge must be plugged in.

- a. Push the 'OPEN / STOP' button to disengage the lock and then open the lid.
- b. Push and hold the 'START' button for approximately three (3) seconds. The 'LOCKED' indicator light will begin to flash; indicating program mode.
- c. When you release the 'START' button, the 'RUN' indicator light will begin to flash. Each flash of the 'RUN' indicator light represents one minute of run time. To change this time, use the procedure below.

To change the preset time: NOTE: Your centrifuge must be plugged in.

- a. Push the 'OPEN / STOP' button to disengage the lock and then open the lid.
- b. Push and hold the 'START' and 'OPEN' buttons for approximately three (3) seconds. The 'LOCKED' indicator will begin to flash; indicating program mode.
- c. Release the buttons. The preset time has been reset to zero. Press the 'START' button once for each desired minute of run-time, (up to 30 minutes).
- d. When you are finished, press the 'OPEN' button to exit. Use the above procedure to verify the time change.

OPERATION:

NOTE: Follow the initial setup procedure on page 4 before initial operation.

1. Plug the centrifuge into an approved 230 Volt A.C., 50 Hz. outlet.
2. Push the 'OPEN / STOP' button and then open the lid.
3. Insert cushions (if needed) into the tube holders for the tube size you are using. Refer to 'Rotor Configurations' (page 8) for assistance.
4. Place the test tube samples into the rotor. Be sure to follow the rules for balanced loads.
5. Close the lid and turn the lid knob clockwise to its complete stop position. The 'LOCKED' indicator light should turn on to indicate that the lock is closed properly. If the lid knob is not completely locked, the 'LOCKED' indicator light will not turn on and the centrifuge will not operate!
6. The timer has been set to a preset time of ten (10) minutes. To display or change this time setting, refer to page 5.
7. Turn on the machine by pushing the 'START' button on the control panel.
8. The centrifuge should begin to spin. The 'RUN' indicator light should illuminate.

IF A PROBLEM IS FOUND DURING A SPIN THAT REQUIRES THE CENTRIFUGE TO SHUT DOWN, PRESS THE 'OPEN / STOP' BUTTON !

9. The run indicator light will begin to flash when one minute remains.
10. After time has elapsed, the 'RUN' indicator light will extinguish and the rotor will slow to a complete stop.
11. The 'UNLOCKED' indicator light will illuminate and the locking mechanism will disengage allowing entry into the rotor chamber. If it does not, refer to page 10 on troubleshooting.
12. Turn the lid knob counterclockwise and open the lid.
13. Remove the samples.
14. If the machine re-locks before the samples are removed, press the 'OPEN / STOP' button to unlock the lid for an additional fifteen (15) seconds.

BALANCED LOADS

Your centrifuge must contain a balanced load in order to work properly.

Use the following rules when loading the rotor.

Spinning balanced loads will extend the life of the machine and produce better results.

1. *Opposing tube holders must be identical and must contain the same cushion, or none at all.*
2. *Opposing tube holders must be empty or loaded with equally weighted samples.*
3. *If an odd number of samples is to be spun, fill a tube with water to match the weight of the unpaired sample and place it across from this sample.*

Before using any cleaning or decontamination methods except those recommended by the manufacturer, users should check with the manufacturer that the proposed method will not damage the equipment.

The rotor chamber, rotor and accessories shall be thoroughly cleaned using either isopropyl alcohol, soap and water, or bleach. The use of Fully/Partially Halogenated Hydrocarbons, Ketones, Esters and all other chemicals not prescribed by the manufacturer may cause damage to the rotor and tube holders and shall not be used.

ROTOR REMOVAL AND INSTALLATION:

To remove the rotor:

1. Unlock the centrifuge by pushing the 'OPEN / STOP' button and unlatch and open the lid.
CAUTION: Unplug the centrifuge from the electrical outlet at this time to eliminate the possibility of electrical shock or other injury.
2. Remove the test tube holders.
3. Remove the knob in the center of the rotor by turning it counterclockwise, (a tool may be required).
4. The rotor is sitting on a cone-shaped adapter. Pull the rotor up and off of this adapter.

To install the rotor:

1. Place the rotor back onto the cone-shaped adapter. You may need to turn the rotor slightly to line it up properly.
2. The rotor should slide onto the rotor cone freely.
3. Once a proper fit has been achieved, replace the rotor knob and turn it until it is hand-tight, (a tool may be required).
4. Replace the tube holders and verify that they are seated properly, (as shown on page 4).
5. It is recommended that the initial setup procedures be performed to ensure that the rotor has been installed correctly and that no damage has been done to the centrifuge during either the rotor installation or possible rotor chamber cleaning. See page 4 for this procedure.

ROTOR CONFIGURATIONS:

The Clinispin Horizon 642E is capable of spinning test tubes up to 17mm x 100mm with its horizontal rotor and up to 17mm x 125mm with its optional fixed angle rotor. Use the following chart and drawing to determine which tube holder and cushion combination should be used with your application.

DIRECTIONS:

1. Compare the tube to be spun with the four boxes shown below.
2. Find the box that most closely matches the tube's length. NOTE: The tube length with its stopper or cap must be shorter than the chosen box or the tube will not fit properly in the tube holder.
3. Match the letter from the chosen box with one of the configurations shown.

A. For Example: A tube is found to be as long as box B. Accordingly, we can use a 125 mm tube holder with a 1525 cushion, (configurations B1 or B2).

Configurations A and B1 can only be used with the fixed angle rotor.

A. 125mm Tube Holder*
BLACK

B1. 125mm Tube Holder* with 1525 cushion*
BLACK

B2. 100mm Tube Holder
RED

C1. 100mm Tube Holder with 1525 cushion*
RED

C2. 75mm Tube Holder
GREEN

D. 75mm Tube Holder with 1525 cushion*
GREEN

* This part is available as an accessory. Contact Woodley Equipment Company LTD for assistance.

CARE AND PREVENTATIVE MAINTENANCE:

With proper care and maintenance your Clinispin Horizon 642E centrifuge will provide years of laboratory service. For proper care, the following steps should be taken:

1. **Provide Adequate Ventilation:** For cooling purposes, the Clinispin Horizon 642E draws in ambient air through the air intake cover on the top of the lid and exhausts this air in the rear of the base. The centrifuge should be placed on a hard smooth surface for good air circulation.
2. **Always Spin Balanced Loads:** Make certain that you are always spinning a balanced load. The Clinispin Horizon 642E has a unique counter balanced motor mounting design which, along with its rubber suction feet, produces excellent vibration dampening. However, out-of-balance loads may break glass test tubes and may produce unsatisfactory separation results. Proper load balancing will improve sample separation and extend the life of the centrifuge. Refer to page 6 on balanced loads for additional information on balancing the load.
3. **Keep the Tube Holders Clean:** NOTE: Always follow the safety guidelines of your laboratory to properly clean up and/or dispose of materials in the event that a substance known to be potentially toxic, radioactive or contaminated with a pathogenetic microorganism is spilt in or on the centrifuge. Small glass fragments left in the tube holder after a tube breakage may adhere to the next test tube inserted in that holder. When this tube is handled, these fragments may puncture protective gloves and lacerate the operator's fingers or hand. Remaining fragments may provide stress points on subsequent tubes and result in additional breakage. If a tube breakage occurs, carefully remove the tube holder. Properly dispose of the sample and tube fragments and thoroughly clean both the inside and outside of the tube holder. Insert a new tube cushion (if necessary) and replace the tube holder in the rotor.
4. **Motor and Electrical Maintenance:** The Clinispin Horizon 642E uses a brushless permanent split capacitor AC motor. It should not need servicing out of line of the centrifuge. The electrical components are selected for high reliability and should not need service.
5. **Keep the Rotor Chamber Clean:** Every six months, or whenever there is a tube breakage, (refer to the note in #3), it may be necessary to remove the rotor and clean the rotor chamber. Follow the instructions on page 7 to remove and reinstall the rotor.

CAUTION: Once the lid has been opened, unplug the mains lead from the electrical outlet to eliminate the risk of electric shock during cleaning.

The rotor chamber, rotor and accessories shall be thoroughly cleaned using either isopropyl alcohol, soap and water, or bleach. The use of Fully/Partially Halogenated Hydrocarbons, Ketones, Esters and all other chemicals not prescribed by the manufacturer may cause damage to the rotor and tube holders and shall not be used.

Apply cleaning solutions with a towel or cloth. Do not submerge the centrifuge in water or other cleaning solutions as this will cause damage and void your warranty!

6. **Tube Holder Replacement:** It is recommended that the tube holders be replaced after 24 months of use.

TROUBLESHOOTING:



NOTE:

The lid latch must be turned completely clockwise to its stop position in order for the centrifuge to operate.

1. Problem: The rotor does not spin freely.

- Solutions:
- Make sure nothing has fallen into the rotor chamber.
 - If there is nothing obstructing the rotor, *contact Woodley Equipment Company LTD for further assistance.*

2. Problem: Excessive noise when the machine is running.

- Solutions:
- Check to see that the load is balanced.
 - Make sure that nothing has fallen into the rotor chamber.
 - Make sure that the nut in the center of the rotor is tight.
 - Have a technician test the motor and replace it if necessary.

3. Problem: The centrifuge does not run.

- Solutions:
- Check the electrical outlet.
 - Make sure the lid lock is turned completely clockwise to its stop position. When the lid is closed properly, the locked light on the control panel will illuminate.
 - Check the circuit breaker switch at the bottom left of the machine. If the switch is white, the breaker has tripped. *Contact Woodley Equipment Company LTD for further assistance.*
 - The printed circuit board may be damaged. Have a technician test and replace the circuit board if necessary.

4. Problem: The lock light does not come on when the lid is closed

- Solutions:
- Make sure that the unit has power.
 - Make sure the lid lock is turned completely clockwise to its stop position. The lock makes contact with a switch underneath the front top of the cabinet. If this switch is not activated, the light will not turn on and the machine will not run.

5. Problem: The machine does not unlock after a run has completed.

- Solutions:
- The lid should remain locked until the rotor has nearly come to a complete stop and then unlock for 60 seconds. If additional unlock time is needed, press the 'OPEN / STOP' button with the machine plugged in and the rotor stopped. If the lid remains locked after this and will not unlock, the electronics may have been damaged. *Contact Woodley Equipment Company LTD for assistance.* To access the rotor chamber, follow the procedure on page 11, "Emergency Lid Removal".

6. Problem: The run time is not set to the desired length.

- Solutions:
- Check the run preset by following the instructions on page 5. If the preset is not the desired length follow the instruction on the rear of the machine to change the run preset time.

For servicing information or additional technical support, contact Woodley Equipment Company LTD.

SAFETY:

Lid Safety Switch: The lid is secured to the top of the cabinet by a latching knob and pawl system. When the knob is rotated clockwise, the pawl grips the underside of the cabinet opening and prevents the lid from opening. A mechanical stop positions the pawl and prevents it from rotating completely. When rotated to the stop position, the pawl makes contact with a micro-switch mounted underneath the cabinet top. The lid safety switch prevents the centrifuge from operating while the lid is open. An indicator light on the front of the machine will light up when the lid has been latched properly.

Lid Safety Interlock System: In addition to the Lid Safety Switch, the Clinispin Horizon 642E has a true “0 RPM” lid locking system. The lid safety interlock system keeps the lid locked at all times, (even during power failure), and requires that the rotor be at rest in order to unlock the lid. The centrifuge will not allow entry into the rotor chamber unless the centrifuge has power and the rotor is stopped. To open the lid, make sure that the centrifuge is plugged in and, with the rotor stopped, press the ‘OPEN / STOP’ button.

Note: After the centrifuge has started spinning, it may be possible to rotate the lid knob enough to cause the pawl to lose contact with the lid safety switch. If this happens, the centrifuge motor may lose power, but the lid will still remain locked. If the knob is accidentally moved and this situation should occur, rotate the knob fully clockwise to its stop position and the centrifuge will resume operation.

Circuit Breaker: The Clinispin Horizon 642E is protected with a 4 Amp circuit breaker located at the rear of the machine mounted to the base. Any electrical short circuit will cause the breaker to cut power to the machine.

Emergency Rotor Chamber Entry:

In the event of power failure, it may be impossible to unlock the lid by conventional means. In this case, entry into the rotor chamber may be made by removing the latch label and using a pen to manually disengage the locking mechanism (see photo). Pull the mechanism towards the control panel and then unlatch and open the lid. If the unit is damaged, contact your authorised dealer or Woodley Equipment Company.



CALIBRATION AND EARTH GROUND TESTING:

It is recommended that the top speed, ground continuity and line leakage be tested every 12 month for continued safe operation. Contact Woodley Equipment Company for further information or testing availability.

WARRANTY:

Woodly Equipment Company warranties that this centrifuge is free from defects in workmanship and parts for 12 months.

REPLACEMENT PARTS:

Part No.	Description
7724037	Foot, rubber
7751068	Switch, lid safety
7786047	Rotor, six-place, fixed-angle
7786021	Rotor, six-place, horizontal
7735014	Motor, 1/30 H.P.
7729006	Capacitor, 4uF, 250V A.C.
7717042	Electronic timing and locking board, 220 Volt
7751043	Circuit Breaker
7724045	Front Panel Label
7760004	Mains lead, Removeable, UK
7714101	Pawl, lock, lid
7714103	Knob, Lock, lid
7712316	Lid
7724071	Hinge, friction
7732007	Seal, lid gasket
7713031	Red Tube Holder, for 17mm x 100mm tubes
7713033	Green Tube Hodlers, for 17mm x 75mm tubes

Available Accessories:

250mm Tube Cushion

p/n 1525



7mm Tube Cushion

p/n 9150



6-Place Fixed-Angle Rotor

p/n 7786047



Shield Caps

p/n 7713011



125mm Tube Holder

*For 17mm x 125mm tubes
(For fixed-angle rotor only)*

p/n 7713032

Contact your authorised dealer or Woodley Equipment Company to order replacement parts or accessories.

WOODLEY
EQUIPMENT COMPANY LTD

Made in the USA

Old Station Park Buildings
St. John's Street, Horwich

Bolton BL6 7NY, United Kingdom

Tel: +44 (0) 1204 669033 • Fax: +44 (0) 1204 669034

www.woodleyequipment.com Email: sales@woodleyequipment.com

www.horizoncentrifuges.com Email: sales@horizoncentrifuges.com