

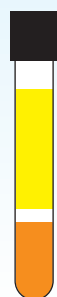
CLINISPIN 755VES horizon

- **Large Capacity:**
 - 24 x 10ml rotor
 - 12 x 15ml rotor
 - 6 x 50ml rotor
- **Full Horizontal Separation**
- **Precise digital Controls**
- **CE Marked**
 - UL and CAN/CSA Certified

The Clinispin horizon 755VES features the largest holding capacity of the Performance Series centrifuges. Its standard horizontal rotor and buckets can accommodate up to 24 tubes. The 755VES offers control over almost every aspect of the unit's operation from variable acceleration and deceleration to easy time and speed input. High speed and force capability produces platelet-poor/ free plasma and greatly reduces processing times. The exclusive Drucker horizontal rotor allows for quick and easy sample loading and complete horizontal separation. Save settings in one of ten memory locations and recall them at the touch of a button.

Why Horizontal Separation?

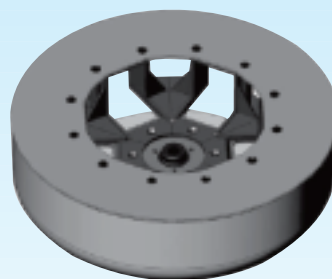
A horizontal rotor produces better separation with a tighter gel line eliminating remixing and re-spins



Horizontal Gel Line



Performance Horizontal Rotor (Standard)



Supplied as standard with:
Performance Horizontal rotor
Set of 4 - Place buckets (6)
Set of 10ml adaptors (24)
Set of 5ml adaptors (24)

European Master Distributor

755VES

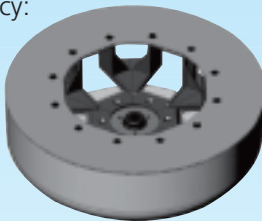
WOODLEY
EQUIPMENT COMPANY LTD.



CLINISPIN 755VES horizon

SPECIFICATION

Min. Acceleration Time:	15 seconds
Min. Deceleration Time:	15 seconds
Electronic Timer:	99 minutes
Weight:	17.7 kgs
Dimensions:	23 cms (h) 37 cms (w) 43 cms (d)
Brushless DC Motor	
4 Amp Protection Breaker	
Max. Power Requirement:	200 Watts
Voltage:	115/ 230V
Frequency:	50/ 60 Hz



**Performance
Horizontal Rotor**
(Standard)

OPERATING FEATURES

- Electronic Timer with Display** Selectable from 1 to 99 minutes, hold feature, (+/- 1%)
- Electronic Speed Control with Display** Easily set the running speed by RPM or RCF
- Brushless DC Motor** For smooth and quiet operation with no routine maintenance
- Variable Acceleration and Deceleration** Customise the run from start to finish
- End-Of-Run Audible Indicator** Sounds when the rotor has stopped to inform the operator the cycle is complete
- Variable Speed** Precision variable speed control gives the operator the ability to select from 500 RPM to the maximum rotor speed in 50 RPM increments
- Quiet Operation and Low Vibration** Double-encased motor and unique "stability mount" assure quiet performance and low out-of-balance vibration

SAFETY FEATURES

- Automatic Lid Lock** Centrifuge will not run with the lid open; lid cannot be opened while samples are spinning
- Positive Lid Lock** Firm mechanical lid lock prevents the escape of material in case of breakage or accident
- Out-Of-Balance Detection** If an imbalance is detected the centrifuge will come to a safe controlled stop
- Welded Steel Construction** For strength and durability

Rotor Options

	No. of Places	Max. Tube Size	Speed Range	Force Range
6-Carrier Performance Rotor				
4-Place Carrier	24	10ml (17 x 100 mm)	500-3500 RPM	40-2200 xg
4-Place Carrier	12	15ml (17 x 125 mm)	500-3500 RPM	40-2200 xg
50ml Carrier	6	50ml (34 x 115mm)	500-3500 RPM	40-2200 xg
6-Place 50ml Fixed Angle Rotor				
50ml Fixed Angle Rotor	6	50ml (34 x 125 mm)	0-4000 RPM	0-2000 xg
20-Place Fixed Angle Rotor				
75 mm tube holder	20	5ml (17 x 75 mm)	0-4000 RPM	0-1700 xg
100 mm tube holder	20	10ml (17 x 100 mm)	0-4000 RPM	0-1900 xg
125 mm tube holder	20	15ml (17 x 125 mm)	0-4000 RPM	0-2000 xg



WOODLEY
EQUIPMENT COMPANY LTD.

WOODLEY EQUIPMENT COMPANY LIMITED
OLD STATION PARK BUILDINGS . ST. JOHNS STREET . HORWICH . BOLTON . LANCASHIRE . UK . BL6 7NY
Tel: +44 (0)1204 669033 Fax: +44 (0)1204 669034
Email sales@horizoncentrifuges.com Web www.horizoncentrifuges.com
Email sales@woodleyequipment.com Web www.woodleyequipment.com