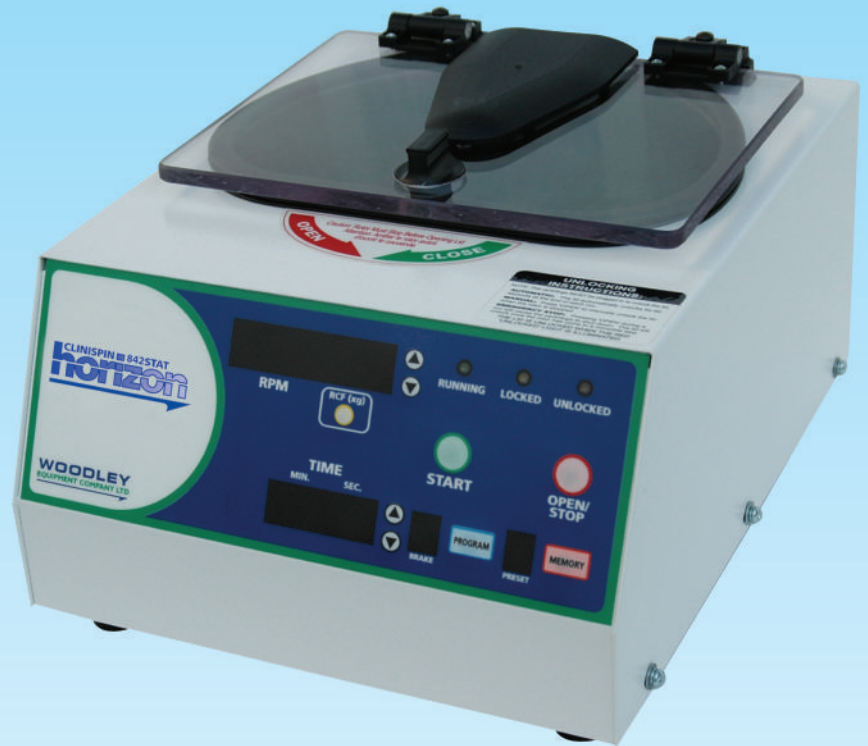


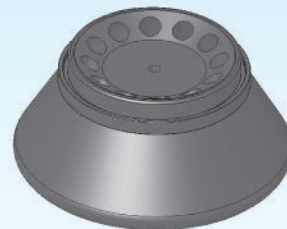
CLINISPIN 842STAT horizon

Platelet poor plasma with a 2 minute spin

- Rapid Separations
 - Full Horizontal Separation
 - Precise Variable Controls
 - CE Marked
- UL and CAN/CSA Certified



Fixed angle STAT Rotor (Standard)



*Supplied as standard with:
Fixed angle STAT rotor
and adaptors for up to
10 ml tubes.*

European Master Distributor

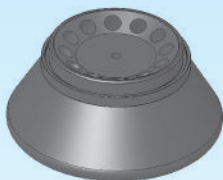
842STAT **WOODLEY**
EQUIPMENT COMPANY LTD.



CLINISPIN 842STAT horizon

SPECIFICATION

Min. Acceleration Time:	15 seconds
Min. Deceleration Time:	15 seconds
Electronic Timer:	99 minutes
Weight:	10.5 kgs
Dimensions:	20 cms (h) 28 cms (w) 34 cms (d)
Brushless DC Motor	
4 Amp Protection Breaker	
Max. Power Requirement:	200 Watts
Voltage:	115/ 230V
Frequency:	50/ 60 Hz



Fixed angle Rotor
(Standard)

OPERATING FEATURES

Electronic Timer with Display Selectable from 1 to 99 minutes, hold feature, (+/- 1%)

Electronic Speed Control with Display Easily set the running speed by RPM or RCF

Brushless DC Motor For smooth and quiet operation with no routine maintenance

Variable Acceleration and Deceleration Customise the run from start to finish

End-Of-Run Audible Indicator Sounds when the rotor has stopped to inform the operator the cycle is complete

Variable Speed Precision variable speed control gives the operator the ability to select from 500 RPM to the maximum rotor speed in 50 RPM increments

Quiet Operation and Low Vibration Double-encased motor and unique "stability mount" assure quiet performance and low out-of-balance vibration

SAFETY FEATURES

Automatic Lid Lock Centrifuge will not run with the lid open; lid cannot be opened while samples are spinning

Positive Lid Lock Firm mechanical lid lock prevents the escape of material in case of breakage or accident

Out-Of-Balance Detection If an imbalance is detected the centrifuge will come to a safe controlled stop

Welded Steel Construction For strength and durability

Rotor Options	No. of Places	Max. Tube Size	Speed Range	Force Range
12-Place Fixed-Angle STAT (Standard)				
75 mm tube holder locations	6	5ml (15mm x 75mm)	1000 to 7000 RPM	140 to 4880 xg
100 mm tube holder locations	6	10ml (15mm x 100 mm)	1000 to 7000 RPM	140 to 5700 xg
12-Place Fixed-Angle STAT				
75 mm tube holder locations	12	5ml (15mm x 75 mm)	1000 to 7000 RPM	140 to 4880 xg



WOODLEY
EQUIPMENT COMPANY LTD.

WOODLEY EQUIPMENT COMPANY LIMITED

OLD STATION PARK BUILDINGS . ST. JOHNS STREET . HORWICH . BOLTON . LANCASHIRE . UK . BL6 7NY

Tel: +44 (0)1204 669033 Fax: +44 (0)1204 669034

Email sales@horizoncentrifuges.com Web www.horizoncentrifuges.com

Email sales@woodleyequipment.com Web www.woodleyequipment.com