

European Veterinary Distributors Catalogue 2008/2009



BIOCHEMISTRY



HAEMATOLOGY



CENTRIFUGES



MICROSCOPES



ENDOSCOPES



PATIENT MONITORING



DELIVERY SYSTEMS

WOODLEY
EQUIPMENT COMPANY LTD.

Laboratory Equipment, Diagnostic and Critical Care



www.woodleyequipment.com/eurovet

VISIT www.woodleyequipment.com for the full Veterinary product range

European Veterinary Distribution Heska and Woodley products		
Clinical Trial Products and Services		
QBC Haematology Point Of Care Products		
UK Veterinary Products Laboratory and Critical Care		
Clinispin Horizon Centrifuge Range		
Vision Microscope Range Microscopy and general laboratory products		



Woodley Equipment Company Ltd.
Old Station Park Buildings, St. Johns Street, Horwich, Bolton, Lancashire, BL6 7NY, United Kingdom
Tel: +44 (0) 1204 669033 Fax: +44 (0) 1204 669034 Email: sales@woodleyequipment.com

Biochemistry

Liqui-Vet Wet Chemistry Analyser	6-7
i STAT® Portable Clinical Analyser	8
i STAT® 1 Portable Clinical Analyser	9
i STAT® Cartridges	10
ERD HealthScreen® Urine Test Kits	11
Glucometer	11



Haematology

RapidVet-H CrossMatch Kits	12
RapidVet-H Blood Typing Kits	13



Centrifuges

Horizon 642e	14
Horizon 842Vet	15
Clinispin Micro	16
Clinispin HCT	16
Ultra 8	16



Microscopes and Accessories

Professional Microscopes	17-18
Medical & Research Microscopes	19-20
Stereo Zoom Microscopes	21-22
Digital / Video Eyepiece	23
Refractometer	24
Service Kit	25
Atlases	25
Diff Cell Counter	26
Disposable Neubauer	26



Endoscopes

Vetscope II	27
Gastrosopes, Bronchoscopes, Arthroscopes	28
Flexible Micro-fibre scopes, Otophosopes, Moticam 480	



Patient Monitoring

VetBiolog II ECG	29
Vet/Ox® G2 Digital Monitor™	30



Other Products

Vet/IV 2.2 Infusion Pump	31
Dermatophyte Testing	32



EXCITING NEW PRODUCTS NOW AVAILABLE



Vet Biolog II ECG



**i-STAT 1
Portable Clinical
Analyser**

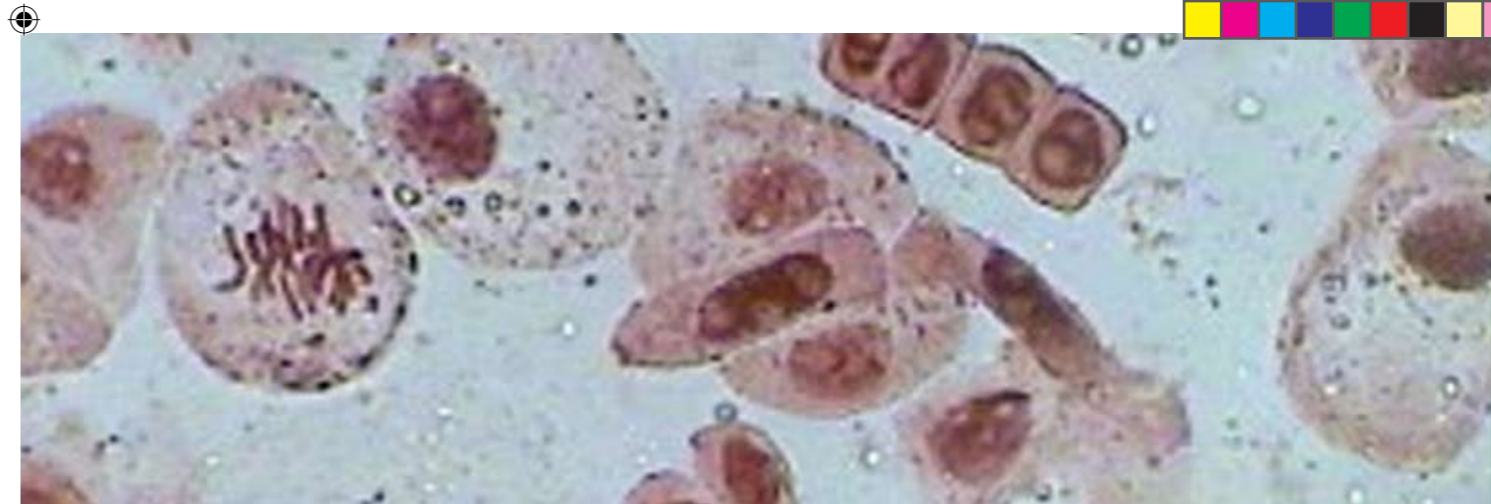


**Blood Typing &
CrossMatch**

Some Country
Distributorships
Still Open



**Liqui-Vet
Portable Wet
Chemistry Analyser**



Welcome

Welcome to Woodley Equipment Company Ltd

Woodley Equipment Company prides itself on being a market leading supplier of laboratory equipment, diagnostic and critical care products to the veterinary industry in the UK and Europe.

The company has a rapidly growing portfolio of high quality products with UK and European Distribution rights, along with a proven track record and outstanding customer loyalty in the form of repeat business and client referrals.

Woodley seeks to supply veterinarians and distributors with the equipment and services to support best practice, thus enabling them to respond to the health needs of their clients, while operating a more efficient and profitable business.

Features of our range include:

- Classic, tried and tested technology
- Reliability with low running costs and maximum flexibility
- Ease of use whilst maintaining accuracy
- Value for money
- First class customer support

Woodley has established distribution partners throughout Europe who market and sell their range of laboratory equipment, diagnostic and critical care products detailed in this catalogue. A list of these distributors and how to contact them is available on www.woodleyequipment.com/eurovet or see page 32 for further details.

Woodley Equipment Company Limited was established in the UK in 1989 and operates from office and warehouse premises in the North West of England. Woodley has a nationwide sales force, specialist product and technical support and a well equipped service department. The Company is now established as one of the fastest growing in the industry sector.

Woodley is an ISO 9001 : 2000 certified company, recognising the quality of administrative and management systems.

For more information about Woodley or any of its products e-mail sales@woodleyequipment.com or call +44 (0)1204 669033.

www.woodleyequipment.com

Our Mission Statement

"It is the mission of Woodley Equipment Company Ltd. to become the premier supplier of laboratory equipment, diagnostic and critical care products to the European Veterinary Markets via it's distribution partners. Whilst developing this position, the Company's reputation for delivering outstanding service and value will continue to be enhanced and maintained."

Liqui-Vet Wet Chemistry Analyser

The first truly compact and portable liquid in-practice clinical chemistry analyser providing laboratory quality results. This highly versatile analyser uses a patented cuvette system to run single tests and mini profiles. Results are displayed within 1 to 5 minutes (depending on the test run).

Features:

- Wide test range.
- Easy to use.
- Single test or mini profile capability.
- Portability for use in-practice, mobile laboratories or in the field.
- Serum, Plasma or Urine samples can be used.
- Prefilled barcoded Cuvettes R1 & R2.
- LED Light Source, Long Life (15 Years).
- Touch Screen LED interface.
- Barcode reading of Test and Patient id.
- 1Kg Approx weight.
- Dimension ~ 255 x 270 x 75mm.
- Calibration and QC Data Stored.
- RS232 Interface.
- Measurement Modes:
ABS End Point, Kinetic, Fixed Time.
- Integrated printer.
- 1000 test memory with data and patient id.



Patented Cuvettes.

LABORATORY QUALITY RESULTS IN-PRACTICE WITH THIS COMPACT YET VERSATILE MACHINE!

3 steps to quantitative results:

PRODUCT	TESTS/Kit	PRODUCT	TESTS/Kit
ALBUMIN	50	T.Hb Whole Blood Sample	50
ALP	50	HbA1C Whole Blood Sample	20
ALT	50	K ENZ*	20
AMYLASE	50	LDH	50
AST	50	LP(a)	20
BILIRUBIN DIRECT	50	MAGNESIUM	50
BILIRUBIN TOTAL	50	MICROALBUMIN	20
CALCIUM	50	Na ENZ*	20
CHOLESTEROL	50	PHOSPHOROUS	50
CK	50	PREALBUMIN	20
CO2	50	TOTAL PROTEIN	50
COPPER	50	TRIGLYCERIDES	50
CREATININE ENZ.	50	TROPONIN*	20
D-Dimer*	20	UREA	50
FRUCTOSAMINE	50	URIC ACID	50
GGT	50	URINARY PROTEIN	50
GLUCOSE	50	ZINC	50
		* Under development	

1 Reagent Chemistry



Read Blank



Add Sample



Read + Print Results



2 Reagent Chemistry



Read Blank



Add Sample + Reagent 2



Read + Print Results



Step 1

Step 2

Step 3

i-STAT® Portable Blood Gas and Critical Care Analyser

The i-STAT is a truly portable critical care analyser giving blood gases, electrolytes and clinical chemistry parameters. Running on lithium batteries, this analyser can be used patient-side or in the field. Holding 50 patient records in its memory the i-STAT can recall stored data at the touch of a button. Results are obtained in 2 minutes, using approximately 90ul of whole blood, and can be printed with an optional printer. The large range of self-calibrating cartridges includes parameters such as Ionised Calcium, Lactate and Activated Clotting Time.

New i-STAT®



WD0201

Features:

- Fast - Reliable Results in 2 minutes.
- Portable - Battery Operated.
- No Maintenance - Automatic Calibration and Quality Control.
- Cost Effective - Pay for only the tests you run.
- Wide Test Menu - Multiple Test results per Cartridge.



1. Fill the cartridge with 3 drops of sample



2. Insert cartridge



3. Critical results in 2 minutes for immediate therapy decisions

The New i-STAT® 1 Portable Clinical Analyser

Offering all the same benefits and cartridges of the i-STAT but with the added bonus of the CHEM8+ cartridge, glucose strips and an individual cardiac troponin I test. The i-STAT 1 is also ergonomically enhanced and has increased storage capability to 5,000 results!

WD0201a

CHEM8+ Cartridge

- Haematocrit (HCT)
- Haemoglobin (Hgb)
- Blood Urea Nitrogen (BUN)
- Creatinine
- Ionised Calcium (iCa)
- Glucose (Glu)
- Chloride (Cl)
- Sodium (Na)
- Potassium (K)
- TC0₂
- Anion Gap



Service Contract

- An unlimited number of breakdown repairs.
- Parts included.
- Carriage paid.
- A loan machine.
- Valid for 12 months.

i-STAT® 1 Cartridges Available



CHEM8+ Cartridge WD0226 pack 25
WD0226b pack 10

- Haematocrit (Hct).
- Haemoglobin (Hgb).
- Blood Urea Nitrogen (BUN).
- Creatinine.
- Ionised Calcium (iCa).
- Glucose (Glu).
- Chloride (Cl).
- Sodium (Na).
- Potassium (K).
- TCO₂.
- Anion Gap.



EC8+ Cartridge WD0211 pack 25
WD0211c pack 10

- Sodium.
- Potassium.
- Chloride.
- BUN.
- Glucose.
- Haematocrit.
- Haemoglobin.
- pH.
- pCO₂.
- TCO₂.
- HCO₃.
- Base Excess.
- Anion Gap.



6+ Cartridge WD0227 pack 25
WD022c pack 10

- Sodium.
- Potassium.
- Chloride.
- BUN.
- Glucose.
- Haematocrit.
- Haemoglobin.



CG8+ Cartridge WD0225 pack 25
WD0225c pack 10

- Ionized Calcium.
- Sodium.
- Potassium.
- Glucose.
- Haematocrit.
- Haemoglobin.
- Base Excess.
- pH.
- pCO₂.
- TCO₂.
- HCO₃.
- pO₂.
- sO₂.



E3+ Cartridge WD0215 pack 25
WD0215c pack 10

- Sodium.
- Potassium.
- Haematocrit.
- Haemoglobin.
- Chloride.



CG4+ Cartridge WD0214 pack 25
WD0214c pack 10

- pH.
- pCO₂.
- pO₂.
- sO₂.
- TCO₂.
- HCO₃.
- Base Excess.
- Lactate.



Crea Cartridge WD0218 pack 25
WD0218c pack 5

- Creatinine.



ACT Cartridge WD0216 pack 25
WD0217c pack 5

- Cellite-Activated Coagulation Time.



Cardiac Troponin I Cartridge WD0230 pack 25
WD0230c pack 5

- cTnI



G Cartridge WD0219 pack 25
WD0219c pack 5

- Glucose.

Glucose Strips WD0231 100 strips

For details and order codes of the i-STAT and i-STAT1 accessories and controls, please refer to the web site at

www.woodleyequipment.com/eurovet

* Chem 8+, Glucose strips and cTnI only useable on the new iSTAT1.
** All other cartridges usable on i-STAT and i-STAT 1



E.R.D. - HealthScreen® Urine Tests

The E.R.D. - HealthScreen Urine Tests detect small amounts of albumin in the urine ("microalbuminuria"). Microalbuminuria (MA) has been clinically defined as levels of albumin in the urine greater than normal (1mg/dL) and less than overt proteinuria (30 mg/dL) at a standardised specific gravity of 1.010.

Conventional urine tests (urine specific gravity, BUN, creatinine) don't detect kidney damage until ~75% of kidney function is lost.

Now You Can Detect Even Small Amounts of Kidney Damage

- Detect albumin at a sensitivity up to 30 times higher than conventional dipsticks, providing the most sensitive measure of kidney damage available.
- Alert you to the presence of kidney damage that could be caused by many common inflammatory, infectious, metabolic and neoplastic diseases.
- Excellent monitoring tools that indicate the severity of disease, treatment success and progression of kidney damage.

Feline WD0057



Canine WD0058

Features:

- Quick results in less than 5 minutes, allowing additional blood/urine sampling if needed while patient is still present.
- Extremely accurate, no false results.
- Semi-quantitative. shows negative, low, medium, high and very high positive test results.
- Available in boxes of 10 tests.



Glucometer

The Prestige Glucometer. Handheld animal-validated glucometer. Whole blood or serum samples and results in under 60 seconds. Supplied complete with 25 test strips.

Prestige Glucometer Strips (25) WD0004



WD0003

RapidVet®-H CrossMatch Kits

For good transfusion practice

A major Crossmatch prior to transfusion can now be performed for companion animals using this self contained kit, making transfusion safer.

- The test is performed in-practice in 10 minutes.
- The test is easy and the results are clear.
- Simple to use and quick to run.
- Part of the RapidVet®-H range.
- Use Crossmatch along with the Canine & Feline blood typing kits.
- Will detect all major canine and feline blood group incompatibilities.
- Available in kits of 3 tests.
- Room temperature storage.

WD0169



**“Supporting
The Pet Blood Bank”**



helping pets to save lives-
www.petbloodbankuk.org

12

www.woodleyequipment.com/eurovet **WOODLEY**
EQUIPMENT COMPANY LTD.

RapidVet®-H Blood Typing Kits

These fast in-house blood typing kits for dogs and cats are essential for transfusion and breeding decisions. They are easy to use and economical and can be stored at room temperature for up to 2 years.

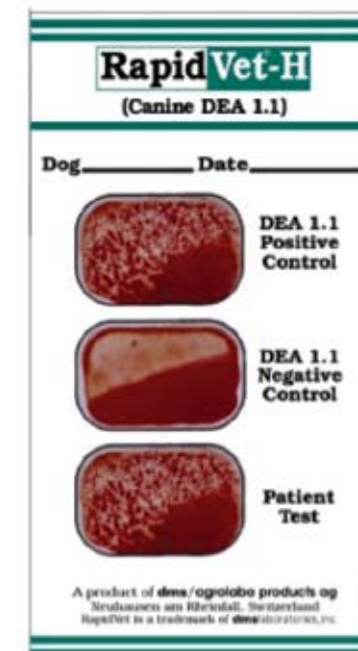
RapidVet™-H

WD0166

For Canine DEA 1.1
Rapid Vet H offers the only in-house blood typing card test for canine DEA 1.1+ and DEA 1.1- blood types. It's fast, easy, economical and... vital.

Available in kits of 5.

“Every dog in need of a transfusion should be blood typed”
- Dr. Urs Giger, Dr.med.vet., Dip ACVIM, ECVIM



RapidVet™-H

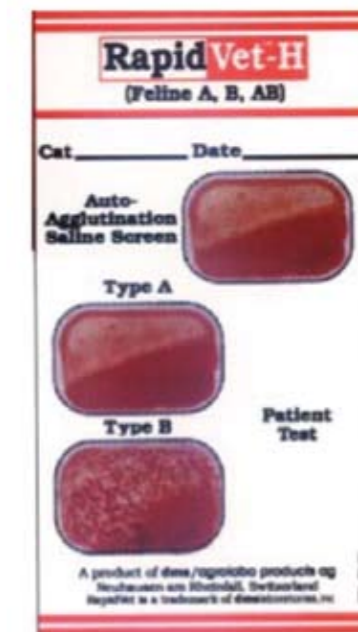
WD0167

For Feline A, B, & AB.
The only in-house blood typing card test for feline A, B, & AB blood types.
Fast, easy, economical and...vital.

Available in kits of 5.

Fading Kitten Syndrome.
Antibodies in the colostrum of blood type B mother causes neonatal isoerythrolysis in her type A kittens.

“Every cat used for breeding or receiving a transfusion should be blood typed”
- Dr. Urs Giger, Dr.med.vet., Dip ACVIM, ECVIM



13

www.woodleyequipment.com/eurovet **WOODLEY**
EQUIPMENT COMPANY LTD.

CLINISPIN 642E horizon

The Clinispin horizon 642E is a single speed centrifuge designed for the veterinary practice or small lab. Its compact design minimises its footprint, leaving more room on your worktop. The unique horizontal rotor design allows for the test tubes to be inserted at a convenient 45 degree angle, they are then gently rotated to a full horizontal position as the motor accelerates.

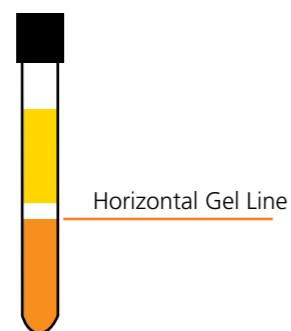
- Compact design.
- Full Horizontal Separation.
- Easy operation.

Features:

- **Electronic Timer.**
Selectable from 1 to 30 minutes, (+/- 1%).
- **Small Footprint.**
Takes up only 30cm² of space.
- **Brushless DC Motor.**
For smooth and quiet operation with no routine maintenance.
- **Cool Running.**
Unique design allows for cool operation even under the heaviest workloads.
- **Single Speed.**
- **Quiet Operation and Low Vibration.**
Double-encased motor and unique "stability mount" assures quiet performance and low out-of balance vibration.

Why Horizontal Separation?

A horizontal rotor produces better separation with a tighter gel line eliminating remixing and re-spins

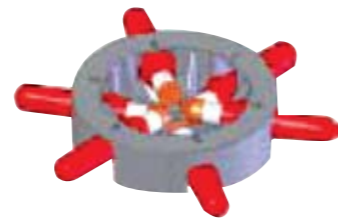


Centrifuges

WD4000



Horizontal Rotor (Standard)



Supplied as standard with:
Horizontal rotor
Set of 10ml adaptors (6)
Set of 5ml adaptors (6)

CLINISPIN 842VET horizon

Centrifuges

ONE CENTRIFUGE DOES IT ALL! 2ml serum, haematocrit and QBC tubes all on one rotor.

The Clinispin horizon 842VET is the most compact of the Performance Series centrifuges. The 842VET offers control over almost every aspect of the unit's operation from variable acceleration and deceleration to easy time and speed input. High speed and force capability produces rapid separation and greatly reduces processing times. Save settings in one of ten memory locations and recall them at the touch of a button.

WD4051



Features:

- **Electronic Timer with Display.**
Selectable from 1 to 99 minutes, hold feature, (+/- 1%).
- **Electronic Speed Control with Display.**
Easily set the running speed by RPM or RCF.
- **Brushless DC Motor.**
For smooth and quiet operation with no routine maintenance.
- **Variable Acceleration and Deceleration.**
Customise the run from start to finish.
- **End-Of-Run Audible Indicator.**
Sounds when the rotor has stopped to inform the operator the cycle is complete.
- **Variable Speed.**
Precision variable speed control gives the operator the ability to select from 500 RPM to the maximum rotor speed in 50 RPM increments.
- **Quiet Operation and Low Vibration.**
Double-encased motor and unique "stability mount" assure quiet performance and low out-of balance vibration.

Combination Veterinary Rotor:

supplied as standard to accommodate 2ml serum tubes, QBC tubes and Haematocrit tubes on the same rotor. Also supplied as standard with haematocrit sealant, reader and capillaries.

Centrifuges

Clinispin Micro WD0315



Features:

- Portable.
- Mains or 12v battery power option.
- 6 x 1.5/2.0ml & 12 x 0.5ml rotors included.
- variable speed 0-7,000 rpm.
- Brushless motor.
- 12 months warranty.

Clinispin Hct WD0316



Features:

- Portable.
- Mains or 12v battery power option.
- Dedicated 4 place haematocrit rotor.
- Fixed speed 11,000 rpm.
- Brushless motor.
- 12 months warranty.

Ultra 8 Centrifuges



Features:

- 8-Place Rotor.
- 8 x 15ml Tube Shields.

3 models available

- Fixed Speed (3,300rpm).
WD5062
- Variable Speed (0-3,300 rpm).
WD5063
- Select Speed (800,1500,1800,3300).
WD5064

All models fitted with a timer.

12 months warranty.

Vision Professional Microscopes

MAX-200 is equipped with Colour Corrected Plan Optical System (CCPS) to satisfy the laboratory professional. CCPS has corrected chromatic aberration on the traditional optical system, providing a significant development in optical performance and reliability. It is the first choice of professionals.

MAX-200 - WD6000



Features:

- Pair of high eye-point PL10X eyepieces with eye caps.
- 30° inclined head rotatable 360°.
- 132mm X 140mm graduated mechanical stage, 76mm x 50mm range of traverse.
- 4 Plan achromatic objectives, 4X (N.A. 0.10), 10X (N.A. 0.25), 40XR (N.A. 0.65) and 100XR oil (N.A.1.25).
- Swing out N.A. 1.2/0.22 achromatic condenser.
- Built in Koehler illuminator systems.
- Coaxial coarse and fine focusing tension control knobs.
- Variable intensity halogen illuminator, 6V 20W wide range voltage transformer applied to use in 90V~240V outlets for international market.
- Focusing, stage and light intensity knobs at your fingertips to minimize fatigue.
- Replacement bulb, fuse and immersion oil.
- Size: 20.3 x 33 x 38.1 (H) cms.
- CE certified.

Replacement lamp: MA07 - WD6035

Shipping Weight: 6.8 kgs

Optional Upgrade:

- PL15X or PL 20 High eye-point eyepiece.
- Turret phase contrast set.

PL10X eyepiece compared with WF10X eyepiece:

- You don't need to take off your glasses to view with PL10X
- Greater wide field image: PL10X, Ø22mm; WF10X, Ø20mm
- Clearer: PL10 of lens distortion is 4%. Regular WF10X is 5.5%

Why a swing-out condenser?

The best aperture for lower power objectives (4X & 10X) is 0.22 and the best aperture for 40X and 100X is 1.20. Swing-out condenser is designed to fill both needs.



Vision Professional Microscopes

For extensive lab use in clinical and research setting. MRP-5000 provides five objectives and interchangeable condenser system which applies to bright field, phase contrast and dark field techniques. Lower position of mechanical stage knob offers comfort for extended use.

MRP-5000 - WD6001



Features:

- 45° binocular Seidentopf head, rotatable 360°.
- Pair of 10X widefield eyepieces, interpupillary distance adjustment 55-75mm.
- 5 DIN Achromatic parfocal and parcentered objectives, backward mounted: 4X (N.A. 0.10), 10X (N.A. 0.25), 40XR (N.A. 0.65), 60XR (N.A. 0.90), 100XR Oil (N. A. 1.25).
- Magnification: 40X to 1000X.
- Focusing stop to prevent objectives and slides from damage.
- 140mm x 135mm graduated mechanical stage (range of travel 40 x 80mm) with lower knobs of coaxial drive.
- Spring loaded slide holder.
- Abbe condenser NA 1.25 with rack and pinion adjustment.
- Iris diaphragm with blue filter.
- Field diaphragm offers more light control.
- Coaxial coarse and fine focusing tension controls.
- Variable intensity halogen illuminator, 6V 20W.
- Replacement bulb and fuse, Immersion oil.
- Dust cover.
- Size: 25.4 x 20.3 x 42 (H) cms.
- Net Weight: 5 kgs.
- **CE** certified.

Replacement Lamp: - **WD6035**
Shipping Weight: 8.2 kgs

Optional Upgrade:

20X objective instead of 60X objective
Plan Achromatic objective set
Simple Phase Contrast set-10X, 40X, 100X
Turret Annular Phase Contrast kit-4X, 10X, 20X, 40X, 100X
Dark field condenser

Vision Medical & Research Microscopes

Designed to meet the demands of modern laboratory microscopy, our research microscopes offer the same optics as our larger professional scopes with ball bearing movements in focusing and stage systems to ensure long life, reliability and accuracy. Complete with standard popular accessories. Contemporary body design includes plastic plating over the metal base for less heat conduction, more comfort for the user.

MRJ-03 - WD6003



Features:

- 30° inclined binocular Seidentopf style head, rotatable 360°.
- Pair of 10X widefield eyepieces.
- 4 DIN Achromatic parfocal and parcentered objectives, 4X (N.A. 0.10), 10X (N.A. 0.25), 40XR (N.A. 0.65), 100XR (oil immersion, N. A. 1.25).
- Magnification: 40X to 1000X.
- 120mm x 125mm Mechanical stage with coaxial drive/rack and pinion adjustment.
- Abbe condenser NA 1.25.
- Iris diaphragm with filter holder including blue filter.
- Coaxial coarse and fine focusing and low knob position.
- 6V 20W variable intensity halogen illuminator.
- Spare bulb, fuse, immersion oil.
- Size: 16.5 x 21 x 38.1 (H) cms.
- Net Weight: 4.8 kgs.
- **CE** certified.

Replacement Lamp: - **WD6035**
Shipping Weight: 5.9 kgs
Case Quantity: 2, Weight 12.2 kgs

MRJ-03L - WD6004

Same popular features of the MRJ-03 but with modern LED light system. Identical features of the MRJ-03 except:

- Variable intensity 4.5V LED cool illumination system.
- Built in rechargeable battery with detachable AC power lead.
- **CE** certified.

Advantages of LED illumination:

- Life time of LED bulb is 100,000 hours.
- LED consumes very little power.
- Fully charged battery provides up to 15 hours of normal use.
- Versatile power allows cordless use for portability.
- Cool LED prevents focus deviation caused by heat-deformed equipment.

Vision Medical & Research Microscopes

Designed to meet the demands of modern laboratory microscopy, our research microscopes offer the same optics as our larger professional scopes with ball bearing movements in focusing and stage systems to ensure long life, reliability and accuracy. Complete with standard popular accessories. Contemporary body design includes plastic plating over the metal base for less heat conduction, more comfort for the user.

MRJ-01 - WD6005



Features:

- 45° inclined monocular head, rotatable 360°.
- 10X widefield eyepieces.
- 4 DIN Achromatic parfocal and parcentered objectives, 4X (N.A. 0.10), 10X (N.A.0.25), 40XR (N.A. 0.65), 100XR (oil immersion, N.A. 1.25).
- Magnification: 40X to 1000X.
- 120mm x 125mm Mechanical stage with coaxial drive/rack and pinion adjustment.
- Abbe condenser NA 1.25.
- Iris diaphragm with filter holder including blue filter.
- Coaxial coarse and fine focusing and low knob position.
- Built-in variable intensity halogen illuminator, 6V 20W.
- Spare bulb, fuse, immersion oil.
- Size: 16.5 x 21 x 38.1 (H) cms.
- Net Weight: 4.8 kgs.
- **CE** certified.

Replacement Lamp: - **WD6035**

Shipping Weight: 5 kgs

MRJ-01L - WD6006

Same popular features of the MRJ-01 but with modern LED light system. Identical features of the MRJ-01 except:

- Variable intensity 4.5V LED cool illumination system.
- Built in rechargeable battery with detachable AC power lead.
- **CE** certified.

Advantages of LED illumination:

- Life time of LED bulb is 100,000 hours.
- LED consumes very little power.
- Fully charged battery provides up to 15 hours of normal use.
- Versatile power allows cordless use for portability.
- Cool LED prevents focus deviation caused by heat-deformed equipment.

Vision Stereo Zoom Microscopes

With Vision Stereo Zoom Microscopes, once the specimen is brought into focus, you can change the magnification to suit your needs without refocusing. The SMZ is versatile enough for educational, industrial, or medical use in agriculture, geology, archeology or biology fields.

SMZ-02 - WD6023

Features:

- 3D System is infinitely variable.
- 10X Widefield Eyepieces with rubber eyeguards.
- Binocular observation tubes, inclined 45°.
- Head rotatable 360°.
- Interpupillary distance adjustable 55mm to 77mm.
- Horizontal zoom controls at each side of head.
- 1X to 4X objectives, total magnification 10X to 40X.
- Field of view ranges from 2.3mm to 5.5mm diameter.
- 85mm working distance.
- 20W Halogen transmitted illuminator under 75mm frosted glass stage plate.
- 20W Halogen Incident (top) illumination.
- 3 way power switch allows incident lighting, transmitted lighting or both.
- Dust cover and instruction manual.
- Overall Size: 17.1 x 24.1 x 45.7 (H) cms.
- Net Weight: 6 kgs.
- **CE** certified.

Replacement Lamp: - **WD6035**

Shipping Weight: 7.7 kgs

SMZ-04 - WD6024

Features:

- Vertical eyepiece tube for photography.
- Other specifications same as SMZ-02.
- Overall size: 17.1 x 24.1 x 50.8 (H) cms.
- N.W: 7 kgs.
- **CE** certified.



Vision Stereo Microscopes

Our advanced Stereo Microscopes offer built in turret objectives that make it convenient to change magnification. Head can be raised or lowered on post to accommodate various sized specimens. Versatile illumination system offers incident (top) lighting or transmitted (bottom) lighting through the frosted glass stage plate. Precision optics provide a wide field of view with good depth and high resolution. Now offering two models with choices of magnification to fill any needs.

SMP-13 - WD6025

1X & 3X Objectives for 10X/30X magnification

SMP-24 - WD6026

2X & 4X Objectives for 20X/40X magnification



Popular 1X/3X Turret objective with dual illumination mounted on stand with arm

SMP-05 - WD6027



Features:

- Stand with 45° inclined binocular stereo head.
- Pair of 10X widefield eyepieces with rubber eyeguards.
- Dual focusing knobs, rack & pinion mechanism.
- Incident (top) & transmitted (lower) 10W halogen illuminator.
- Frosted glass stage plate 95mm diameter with clips.
- Additional black & white contrast stage plate.
- 3 way switch allows top light, bottom light or off.
- Vinyl dust cover, spare bulb.
- Size: 11.4 x 19 x 30.5 (H) cms.
- Net Weight: 3.2 kgs.
- certified.

Replacement Bulb: MA69 (top & bottom)

WD6035

Shipping Weight: 3.2 kgs

Case Quantity: 6, Weight 18.6 kgs

Features:

- Stand with 45° inclined binocular stereo head, 360° rotatable.
- Pair of 10X widefield eyepieces with rubber eyeguards.
- Dual focusing knobs, rack & pinion mechanism.
- Incident (top) & transmitted (lower) 10W halogen illuminator.
- Frosted glass stage plate 95mm diameter with clips.
- Additional black & white contrast stage plate.
- 4 way switch allows top light, bottom light or off.
- Vinyl dust cover, spare bulb.
- Size: 11.4 x 19 x 30.5 (H) cms.
- Net Weight: 3.2 kgs.
- certified.

Replacement Bulb: MA69 (top & bottom)

WD6035

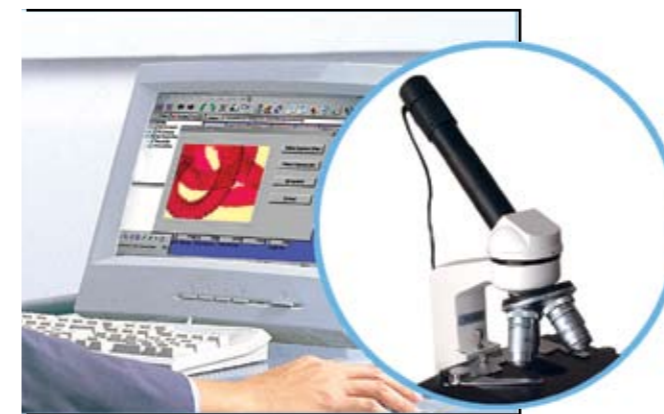
Shipping Weight: 3.2 kgs

Case Quantity: 6, Weight 18.6 kgs

Vision Digital/Video Eyepieces

Digital Microscope Eyepiece - WD6045

The new Digital Microscope Eyepiece is an inexpensive way to upgrade just about any stereo or compound microscope into a Digital Microscope. This combination digital camera with built in 10X eyepiece is a great way to preview live colour digital images directly from your microscope onto your computer via the USB port. This camera comes with easy to install Ulead® software in order to view, edit and save images. Great way to share and email images to colleagues and friends.



Features:

- Live vivid 640 x 480 images.
- Built-in 10X eyepiece.
- Automatic light contrast and fine focus.
- Fits on any standard 23mm eyetube in place of ordinary eyepiece.
- Microscope adapter 30mm allows camera to be used on virtually any microscope.
- Easy to install Ulead® software package that can view, save, edit images and much more.
- Compatible with all Windows versions supporting USB, not Macintosh compatible.
- One year limited warranty.

Individually boxed, with USB port connector, 30mm adapter, Ulead® Photo Explorer CD, instruction manual.

Shipping Weight: 0.5kgs.

Video Microscope Eyepiece - MA87 - WD6046

Similar to the Digital Eyepiece, this state of the art camera projects the exact same magnification on your TV that you would normally view in your microscope. Just replace the scope eyepiece with this and connect to the TV video input with the enclosed RCA jack. Works with monocular, binocular or trinocular scopes. Especially useful in a classroom teaching environment, laboratory, or just for the budding scientist.



Features:

- Easy to install.
- Built-in 10X eyepiece.
- 640 x 480 resolution.
- Automatic fine focus.
- Adapters to fit most microscopes.

Individually boxed, with 3 adapters, AC power lead, RCA plug & instruction manual.

Shipping Weight: 0.5kgs.

Microscope Accessories



Refractometer WD0005

Designed for both Veterinary and Medical use. This unit provides quick and accurate indication of vital fluid levels. The triple scale reads: Urine Specific Gravity, Total Serum Protein, and Refractive Index. Refractometer equipped with ATC (Automatic Temperature Compensation).

Model RHC-200

Range	Min Div	Accuracy
0-12 g/dl	0.2 g/dl	± 0.2 g/dl
1.000-1.050 sg	0.005 sg	± 0.05 sg
1.330-1.360 RI	0.0005 RI	± 0.0005 RI

Hand Tally - WD6134



Comfortable thumb push and easy to read numerals are ideal for counting cells or any other high number tally up to 9999. Individually boxed. 10/pk. 200/case. Order by each.

Stopwatch - WD6135



Digital display offers date including month, day and year and hour, minutes and seconds time, including day of week. Can serve as stopwatch or timer and includes alarm settings. Uses lithium battery (included) and comes individually boxed with nylon cord.

Microscopes Accessories

Microscope Service Kit WD0383

Includes:

- Lens Cleaning Fluid. **WD0384**
- Air Duster. **WD0385**
- Cotton Applicators. **WD0386**
- Microglide Lubricant. **WD0387**
- Lint-free lens paper. **WD3088**
- Illustrated service instructions.

Items available separately - SEE CODES



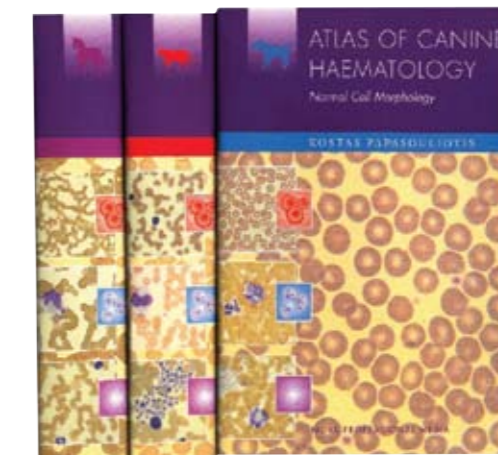
Atlases

Haematology
Written exclusively for Woodley Equipment Company Ltd by Kostas Papisoulitis DVM PhD DipRCPath MRCVS (Bristol Vet School), these atlases are an excellent microscope-side reference guide offering normal cell morphology

- Erythrocytes.
- Neutrophils.
- Lymphocytes.
- Eosinophils.
- Basophils.
- Thrombocytes.
- Methodology: Microhaematocrit.
- Methodology: Blood smears.
- Monocytes.

Titles Available

- Canine **WD0451**
- Feline **WD0452**
- Equine **WD0453**



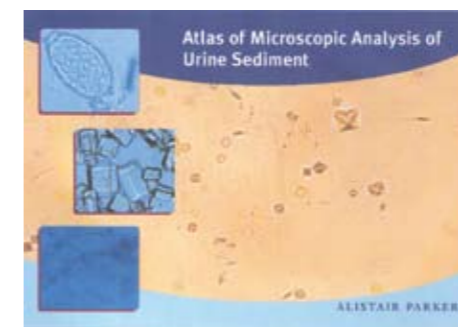
POSTER FORMATS

Ecto-parasites of Dog & Cat **WD0457**

Urinalysis **WD0454**

Written exclusively for Woodley Equipment Company Ltd by Alistair Parker (Nationwide Laboratories), this microscope-side reference guide is the fourth in our series.

- Sample collection.
- Physical characteristics.
- Examination of sediment.
- Photographic identification of casts.
- Contaminants in urine sediment.



Microscope Accessories

Differential Cell Counter



WD0111
Mechanical 8 key cell counter

Disposable Haemocytometer (Improved Neubauer)

Features:

A disposable plastic counting chamber with a grid pattern exactly the same as the Improved Neubauer.

- Precise fixed depth counting chamber with superior accuracy and reproducibility.
- No need to place cover glass on slide: possible to do precise quantification.
- Reduces the risk of exposure to potentially infectious material.
- Increases productivity by eliminating cleaning and work interruptions.
- Very light and not breakable, compared with glass.
- Kits of 20



WD0107

Endoscopes



The Vet-Scope II endoscope offers cutting-edge fibreoptic technology at a fraction of the cost of conventional endoscopes. This new instrument uses plastic fibres, rather than glass. More affordable, more durable and incredibly good optics. Use this endoscope exactly as you would a standard endoscope using the supplied, battery-powered light source, or, use it with your otoscope power source. Diagnose chronic vomiting, foreign bodies and collapsed tracheas in dogs and cats, and even use it as an upper airway scope in horses.

Standard Kit

VT-24 and VT-36 fibreoptic scopes with 24" or 36" X 5.8mm flexible shafts are capable of bending in any direction. The shaft can bend to 3" radius and has a "memory" that maintains its shape. The eyepiece is focusable to within 0.5" of the target.

Each kit comes complete with a portable, Xenon lightsource (batteries included) with extra bulb and custom, foam-lined carrying/storage case.

'Vetscope II' 24" Package (Inc. Case, Biosleeve, 3 -prong grasper & Insufflator)	1	WD0569
'Vetscope II' 36" Package (Inc. Case, Biosleeve, 3 -prong grasper & Insufflator)	1	WD0570
5.8mm x 24" Vetscope II	1	WD0571
5.8mm x 36" Vetscope II	1	WD0572
Flexible Biosleeve to fit 24" Vetscope II (6mm)	1	WD0573
Flexible Biosleeve to fit 36" Vetscope II (6mm)	1	WD0574
23" x 1.8mm Biopsy Forceps	1	WD0575
23" x 1.8mm 3-prong grasper	1	WD0576
35" x 1.8mm Biopsy Forceps	1	WD0577
35" x 1.8mm 3-prong grasper	1	WD0578
Bulb Insufflator	1	WD0579
Mirror Attachment	1	WD0580
Magnet Attachment	1	WD0581
Halogen Bulb	1	WD0582

Plastic fibre technology -
No problems with
glass fibre breakage



WD0569
24" Vetscope II Package
(including accessories)

WD0570
36" Vetscope II Package
(including accessories)

Cutting Edge
Fibreoptic
Technology

Endoscopes Continued

3 Metre Gastroscope System WD0551

- 4 way articulation.
- 10mm diameter.
- 2.8mm working channel.



1.35 Metre Gastroscope System WD0552

- 4 way articulation.
- 8mm diameter.
- 2.2mm working channel.

Rigid Arthroscope WD0564

- 180mm x 2.9mm.
- Built in illumination (power handle).



Flexible Micro-fibre scopes

- WD0562 25cm x 1.40mm
- WD0563 50cm x 1.40mm
- Built in illumination (power handle).



Otoscope System and Accessories

- Otoscope 5mm with built in 2mm working channel.
- Otoscope 3mm 'Piggy back' 2mm working channel.
- CCD Camera (Moticam 480)
- 3-prong grasper.
- Biopsy forcep.
- Battery operated light source.
- Replacement bulb for 150w light source (21v)
- Cleaning Brush.

- WD0560
- WD0561
- WD0419
- WD0567
- WD0566
- WD0559
- WD0565
- WD0568



1 Metre Bronchoscope System WD0554

- 6mm diameter.
- 1.8mm working channel.
- 2 way articulation.

1 Metre Bronchoscope System WD0553

- 8mm diameter.
- 2.2mm working channel.
- 2 way articulation.

MDS Gastroscope/ Bronchoscope Systems

come complete with:

- Sturdy carry case.
- 150W halogen light source with fluid light guide (where applicable).
- Biopsy forceps.
- 3 prong graspers.
- Cleaning brush.

Moticam 480 System WD557 Endoscope Adaptor (Focussing C-Mount) WD0412

Simply connecting the Motic 480 camera can transform your endoscope allowing images to be viewed on a TV screen or PC. Captures images on VHS or digitally respectively.

Vet Biolog II ECG

The Biolog II is a complete 12 lead ECG capable of recording one, six or twelve channels of diagnostic ECG data. For an instant single channel ECG, simply press the Biolog to the patient's chest for a quick "window on the heart", or connect the 6 lead or 12 lead ECG cable for a complete diagnostic ECG. The Biolog ECG is mobile, compact and simple to use. Ideal for emergency situations, the Biolog is just as practical for routine on-the-spot checks as it is for acquiring and analysing 12 lead ECG data.

Pocket sized 12 lead simultaneous ECG

- Portable, convenient, easy to use ECG monitoring.
- Rapid single lead ECG acquisition via direct chest placement or single lead cable.
- Diagnostic ECG monitoring via the 6 and 12 lead ECG cables.
- Download ECG's to Vet Cardio View Software.
- Separate printing (plain paper), via MPI printer interface.
- Transtelephonic capabilities.
- High definition LCD screen with back lighting.
- Two heart ranges for large and companion animals.
- Battery status bar on screen.
- Infra-red linked companion printer interface with 25 and 50mm/second print speeds.
- Acquires and stores in memory 5 to 200 seconds of a single lead via direct thorax placement or via single lead animal cable.
- Acquires and stores in memory 5 to 80 seconds of rhythm strip followed by a simultaneous 6 lead animal cable.
- Supplied with leads and software.



Accessories

- WD0851 Vet Biolog II with 6 lead cable, MPI-3 Interface, printer and carrycase.
- WD0867 Vet Biolog II with 6 lead cable, cardioview software and carrycase.

- WD0869 Printer kit with MPI 3
- WD0870 Equine kit including cables and electrodes.
- WD0872 Single lead cable.
- WD0873 Cardioview Software.
- WD0879 12 lead cable.

The Vet/Ox® G2 Digital Monitor™



Features and Benefits

All oximeters are NOT created equal. Good signal processing results start with good raw data. The Vet/Ox G2 Digital Monitor™ is unique because it's the only oximeter to use a digital sensor.

The result is a stronger, cleaner signal that provides vital signs at vital times.

Features:

- A multiparameter monitor combining high performance SpO₂, pulse rate, temperature and respiratory rate.
- Uses a patented Light-To-Frequency (LTF) converter to digitise the signal in the sensor.
- Incorporates advanced Fast Fourier Transfer (FFT) signal processing algorithm.
- Veterinary-specific sensor designs.
- Eliminates errors due to motion and electronic noise.
- Finds and holds a weak pulse.
- Excellent low perfusion performance.

Accessories:

- WD0679 Sensor Digital Lingual "Y" with clip.
- WD0678 Sensor Digital Lingual "Y" without clip.
- WD0677 Sensor, Digital Large Equine with "C" clamp.
- WD0678 IV Pole Mount.
- WD0677 Cage Mount.
- WD0676 Belt Clip.

WD0675



Other Products

Vet/IV 2.2 Infusion Pump

This light weight (2.2lbs) and portable iv pump hangs from a cage or mounts on an iv stand and pumps intravenous fluid or parenteral nutrition. It is easy to use allowing programmable rate and time OR rate and volume or you can use the 10 pre-programmed drip rates. Uses Baxter giving sets or can be recalibrated for other lines.

Benefits:

- PORTABLE - Battery or AC powered.
- EASY TO USE - Intuitive user menu.
- WIDE APPLICATION RANGE - From very small to very large volumes.
- SAFE - Alarms for critical messages.
- VERSATILE - Cage mount and IV pole mount.

WD0753



Features:

- Weighs only 2.2 pounds.
- Rechargeable battery life up to 8 hours, or mains power. (WD5113B)
- Pre-program up to 10 different drip rates.
- Program rate and time (it calculates volume) OR rate and volume (it calculates time).
- Piggyback compatible.
- Flow rate range from 0.1 to 999ml/hr.
- 3 pressure settings for different patient conditions to overcome or help prevent occlusions.
- Infusion sets with one injection port. (WD0766)

Dermatophyte Testing

Rapid Vet-D Blue

WD0168 kits of 25

Rapid Vet-D is an in-practice 72 hour test to detect the presence of veterinary dermatophytes in companion animals.

Rapid Vet-D - room temperature incubation and storage of product.

Rapid Vet-D's special formulation relies on only a colour reaction. That means no colony identification is required.

If the Rapid Vet-D turns red it is positive for dermatophytes, if it stays amber it is negative.
It's that simple!



Rapid Dermatophyte Test for Dogs, Cats, Rabbits & Horses

www.woodleyequipment.com

WOODLEY EQUIPMENT COMPANY LTD EUROPEAN DISTRIBUTION PARTNERS

Laboratory Equipment, Diagnostic and Critical Care Products

AUSTRIA:
Melet Schloesing
+43 223 628 023
www.mslab.at

FRANCE:
Melet Schloesing
+ 33 130 753 000
www.mslabos.com

SPAIN:
Everest Tecnovet
+34 902 108 848
www.everest-tecnovet.com

BELGIUM:
Menarini Diagnostics
+ 31 402 082 000
www.menarini.com

GREECE & CYPRUS:
Nutri-Biomed Hellas Ltd
+30 210 283 4601
www.eurovetanimalhealth.com

SWEDEN:
Scandivet AB
+ 46 171 85770
www.scandivet.se

LUXEMBOURG:
Menarini Diagnostics
+ 31 402 082 000
www.menarini.com

HUNGARY:
Anivet
+ 36 138 381 38
www.anivet.hu

TURKEY:
Yenicag
+90 232 329 7558
www.yenicageczadeposu.com

NETHERLANDS:
Menarini Diagnostics
+ 31 402 082 000
www.menarini.com

IRELAND:
Cruinn
+ 35 316 297 400
www.cruinn.ie

CROATIA:
Ban Promet d.o.o.
+ 38 512 347 522
www.ban-promet.hr

NORWAY:
Akselsens Agenturer
+47 678 182 40
www.aksvet.no

CZECH REPUBLIC:
Medisco Praha s.r.o.
+ 42 231 143 00
www.medisco.cz

POLAND:
Profutura Sp.z.o.o.
+ 48 226 130 767

DENMARK:
Valcadan
+ 45 756 474 44
www.valcadan.dk

SLOVENIA:
Dr Gorkic d.o.o.
+38 617 590 250
www.dr-gorkic.si



Contact your country distributor for further details
or visit www.woodleyequipment.com/eurovet

Tel: +44 (0)1204 669033
Fax: +44 (0)1204 669034
Email: sales@woodleyequipment.com
Web www.woodleyequipment.com

WOODLEY
EQUIPMENT COMPANY LTD.

OLD STATION PARK BUILDINGS • ST. JOHNS STREET • HORWICH • BOLTON • LANCASHIRE • BL6 7NY.



OLD STATION PARK BUILDINGS . ST. JOHNS STREET
HORWICH . BOLTON . LANCASHIRE . BL6 7NY

Tel: +44 (0)1204 669033 Fax: +44 (0)1204 669034
Email: sales@woodleyequipment.com

www.woodleyequipment.com

Ref: wec/Eur 002/0408

