



UK Veterinary Equipment Catalogue 2008/2009



HAEMATOLOGY



BIOCHEMISTRY



CRITICAL CARE



DIAGNOSTIC KITS



CENTRIFUGES



ENDOSCOPES



MICROSCOPES

WOODLEY
EQUIPMENT COMPANY LTD.

Laboratory Equipment, Diagnostic and Critical Care



www.woodleyequipment.com





Haematology

MS4 5 Vet Haematology Analyser	8
MS9 5 Vet Haematology Analyser	9
RapidVet-H CrossMatch Kits	10
RapidVet-H Blood Typing Kits	11
MS Mix® - Blood Mixer	12
Diff cell counter	12



Biochemistry

M-Scan II Vet Biochemistry Analyser	13-14
'Vital' Wet Chemistry Analyser	15-16
i STAT® Portable Clinical Analyser	17
i STAT® 1 Portable Clinical Analyser	18
i STAT® Cartridges	19
Lactate Meter	20
Refractometer	20
Glucometer	20



Diagnostic Test

Witness® Range	21
Witness® Canine Product Range	22
Witness® Feline Product Range	23
Witness® Relaxin	24
Witness® Avian Flu Kit Detect	24
E.R.D. - Healthscreen®	25
Clinispin Cytovet Centrifuge	26
Dermatophyte Testing	27



Centrifuges

Horizon 842Vet	28
Horizon 642E	29
Clinispin Micro	30
Clinispin HCT	30
Consumables	30



Microscopes & Accessories

Optika Biological Microscope Range	31-33
Optika Digital Microscope	34
Digital Video Camera	35
Consumables (servicing kit)	36
Atlases	37



Endoscopes

VetScope II	38
Gastroscope	39
Bronchoscope	39
Arthroscope	39
Micro-fibre scope	39
Otoscope	39
Moticam Endoscope Adaptor	39



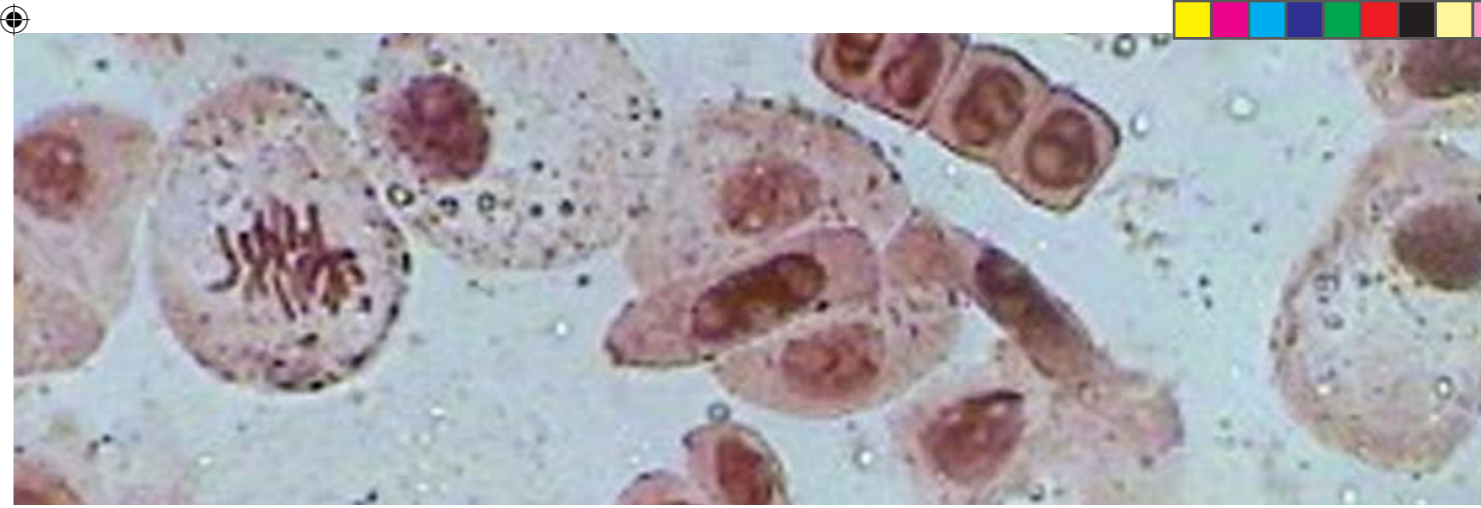
Patient Monitoring

Vet Biolog II	40
Vet/Ox® G2 Digital Monitor™	41
Capnograph N85-1	42
Oximetry N65-1	42
Oximetry Accessories- Vetstat Sensor	42
Vettox 4404 Accessories	42



Patient Delivery Systems

Vet/IV 2.2 Infusion Pump	43
Alaris Syringe Pumps	43



Welcome to Woodley Equipment Company Ltd

Woodley Equipment Company prides itself on being a market leading supplier of laboratory equipment, diagnostic and critical care products to the veterinary industry in the UK and Europe.

The company has a rapidly growing portfolio of high quality products with UK and European Distribution rights, along with a proven track record and outstanding customer loyalty in the form of repeat business and client referrals.

Woodley seeks to supply veterinarians and distributors with the equipment and services to support best practice, thus enabling them to respond to the health needs of their clients, while operating a more efficient and profitable business.

Features of our range include:

- Classic, tried and tested technology
- Reliability with low running costs and maximum flexibility
- Ease of use whilst maintaining accuracy
- Value for money
- First class customer support

Woodley Equipment Company Limited was established in the UK in 1989 and operates from office and warehouse premises in the North West of England. Woodley has a nationwide sales force, specialist product and technical support and a well equipped service department. The Company is now established as one of the fastest growing in the industry sector.

Woodley is an ISO 9001 : 2000 certified company, recognising the quality of administrative and management systems.

For more information about Woodley or any of its products e-mail sales@woodleyequipment.com or call +44 (0)1204 669033.

www.woodleyequipment.com

Our Mission Statement

"The objective of Woodley Equipment Company Ltd. is to become the premier supplier of laboratory equipment, diagnostic and critical care products to the UK and European Veterinary Markets. Whilst developing this position, the Company's reputation for delivering outstanding service and value to both customers and business partners will continue to be enhanced and maintained."

The Complete In-Practice Laboratory Solution

Haematology, Biochemistry, Blood Gas, Electrolyte and Wet Chemistry



The 'Vital' Wet Chemistry System

Is a versatile, cost effective analyser providing laboratory quality results in-practice.

The MS4₅ Vet Haematology Analyser



Is the first professional analyser with a 5 part differential designed specifically to meet the needs of today's busy veterinarian.

The M-Scan II Vet Biochemistry Analyser

Is a simple, more flexible biochemistry analyser providing clinical chemistry analysis in a compact laboratory.



The i-STAT[®] 1 Portable Clinical Analyser

Is a truly portable analyser giving blood gas, electrolyte and clinical chemistry parameters, patient side or in the field.



Now you have even more choice!

The MS4₅ Vet Haematology Analyser

Compact, Simple and Efficient!

The MS4₅ Vet Haematology Analyser is the first professional analyser with a 5 part differential designed specifically for veterinarians. This totally automatic analyser is fast, reliable and provides a complete blood count of 21 parameters and 4 histograms.

Specification:

- Simple to operate and totally automatic.
- Accurate results in minutes from 30ul whole blood.
- Blood, CSF and Synovial fluid with EDTA can all be analysed.
- Measures the diameter and volume of each cell and its passing time.
- Compact design (A4 footprint) with display and storage capability.
- 21 parameters with real measurement of eosinophils.
- 9 different species can be selected at the press of a key.
- Economical to run.
- Robust, reliable and not temperature sensitive.
- Fully automatic from daily cleaning to stand-by.
- Automatic rinse with distilled water to prevent crystallisation and clotting.
- Connects to in-practice client management systems.
- Interfaces with most other biochemistry analysers. ('Vital' Wet Chemistry, M-Scan II Vet, Reflovet®, Vetest®, VetScan® and Spotchem®) for a single A4 print of the combined results.
- 100 sample data storage.
- Automatic quality control storage with data analysis.

Reagents supplied complete in a single, ready to use, box:

Reagents are made of :
 a diluent: ISOFLEX
 a detergent: TRANSFLUX
 a lysing reagent: ACTI-DIFF
 a rinse solution: RINSE
 a specific eosinophil lysing reagent: EO-DIFF

Free QC Program:

- Monthly quality control materials and training provided free.

5 Year Parts Warranty

Woodley analyser customers benefit from a permanent 15% discount on all Witness® Diagnostic Kits - see page 21 for full range details.

WD1150



Species:

Dog, cat, cow, parrot, horse, sheep, pig, goat and two programmable on request.

Parameters:

HB, Hct, MCV, MCH, MCHC, RDW, PLT, MPV, PCT, Total WBC, RBC, LYM x 10⁹/L, LYM%, MON x 10⁹/L, MON%, Neu x 10⁹/L, Neu%, EOS x 10⁹/L, EOS% and BAS%. BAS x 10⁹/L.

Warranty:

Included in the purchase price is 1 year comprehensive warranty with parts covered for 5 years in total.

The MS9₅ Vet Haematology Analyser

Powerful and Reliable yet Compact.

Discover a totally innovative concept in the field of 5 part differential haematology analysers. The MS9₅ features fully digital powerful electronics, Windows user interface and a remarkably optimised mechanical system.

Specification:

- WBC differential analysis utilising the unique analytical dimension of Nucleo-Cytoplasmic Ratio.
- More accurate WBC separation and differentiation due to three dimensional scattergram.
- Fast results with a full profile in less than 90 seconds.
- Specific eosinophil count using separate chamber and reagent.
- Windows based user interface for connection to practice client management systems.
- 29 parameters for the 5 part differential with 5 white blood cell populations.
- Sampling of 30 to 60 µl depending on the selected mode.
- Programmable start and standby.
- Automatic calibration mode.
- Built in database for simplified multi-criteria search of previous results.
- Data export on to a CD-ROM or central data processing.
- Adjustable printing; header, parameter selection, normal values, curves, colour, fonts, size, listing modes etc.
- Optional M-Sampler (auto sampler) allows direct transfer of samples without risk of contamination.

Free QC Program:

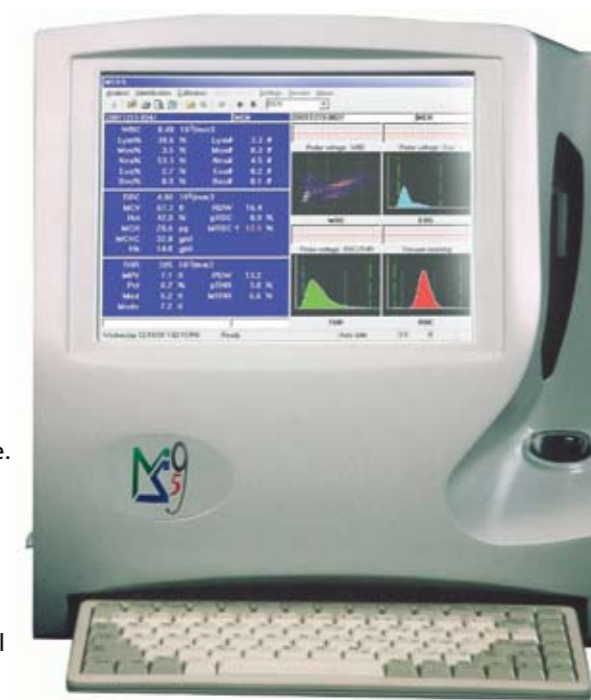
- Monthly quality control materials and training provided free.

Species:

Dog, cat, cow, parrot, horse, sheep, pig, goat and two programmable on request.

Warranty:

Included in the purchase price is 1 year comprehensive warranty with parts covered for 5 years in total.



Parameters:

WBC, Lym%, LYM#, Mon%, Mon#, Neu%, Neu#, Eo%, Eo#, Ba%, Ba#, RBC, Hb, MCV, Hct, MCH, MCHC, RDW-CV, RDW-SD, µRBC%, Macro RBC%, THR, MPV, Pct, PDW, Mode, Median, µTHR%, Macro THR%.

Histograms:

WBC Scattergram (Lym, Mon, Neu, BA), RBC, THR, Eo.

5 Year Parts Warranty

Woodley analyser customers benefit from a permanent 15% discount on all Witness® Diagnostic Kits - see page 21 for full range details.

RapidVet®-H CrossMatch Kits

For good transfusion practice

A major Crossmatch prior to transfusion can now be performed for companion animals using this self contained kit, making transfusion safer.

- The test is performed in-practice in 10 minutes.
- The test is easy and the results are clear.
- Simple to use and quick to run.
- Part of the RapidVet®-H range.
- Use Crossmatch along with the Canine & Feline blood typing kits.
- Will detect all major canine and feline blood group incompatibilities.
- Available in kits of 3 tests.
- Room temperature storage.

WD0169



**“Supporting
The Pet Blood Bank”**



helping pets to save lives-
www.petbloodbankuk.org

RapidVet®-H Blood Typing Kits

These fast in-house blood typing kits for dogs and cats are essential for transfusion and breeding decisions. They are easy to use and economical and can be stored at room temperature for up to 2 years.

RapidVet™-H

WD0166

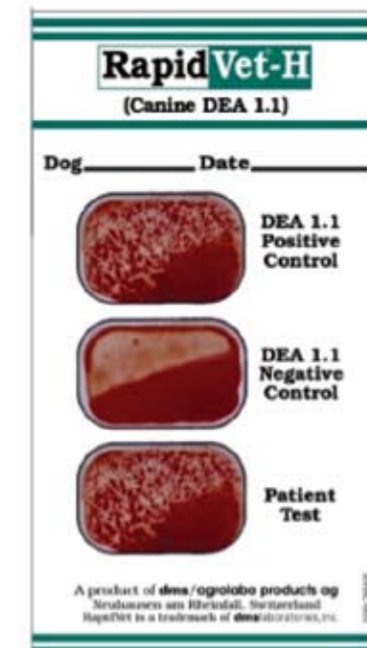
For Canine DEA 1.1

Rapid Vet H offers the only in-house blood typing card test for canine DEA 1.1+ and DEA 1.1- blood types. It's fast, easy, economical and... 'Vital'.

Available in kits of 5.

“Every dog in need of a transfusion should be blood typed”

- Dr. Urs Giger, Dr.med.vet., Dip ACVIM, ECVIM



RapidVet™-H

WD0167

For Feline A, B, & AB.

The only in-house blood typing card test for feline A, B, & AB blood types. Fast, easy, economical and.... 'Vital'.

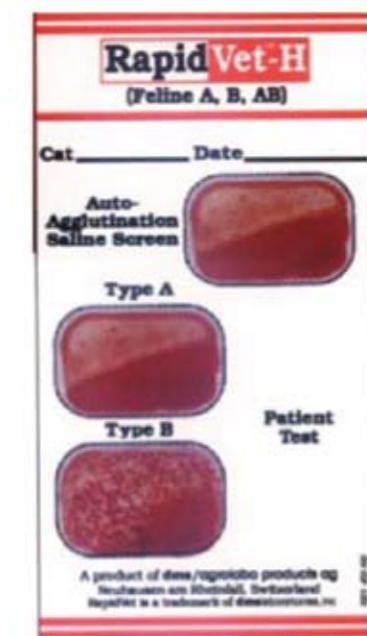
Available in kits of 5.

Fading Kitten Syndrome.

Antibodies in the colostrum of blood type B mother causes neonatal isoerythrolysis in her type A kittens.

“Every cat used for breeding or receiving a transfusion should be blood typed”

- Dr. Urs Giger, Dr.med.vet., Dip ACVIM, ECVIM



Accessories

MS mix® - the new compact blood mixer with adjustable speeds.

The MS mix® gives gentle but effective mixing for up to 12 blood sample tubes from 200µl to 5ml. In addition to its 5 year warranty, the MS mix® offers adjustable speed and angle of the rotating disc in order to prevent haemolysis.



- Holds up to 12 tubes.
- 6 clips for tubes with diameters from 8 - 12mm.
- 6 clips for tubes with diameters from 11 - 15mm.
- Adjustable rotating speed: from 5 to 50 rpm.
- Diameter of rotating disc: 130mm.
- Fully adjustable mixing angle from horizontal to vertical (90° to 180°).
- Manual stop allowed.
- Dimensions 140 w x 140 d x 190mm h.

WD1156



Differential Cell Counter

Mechanical 8 key cell counter **WD0111**

Haematology Consumables

Product Code	Description	Size
WD0106	Speedydiff Kit.	3 x 500ml
WD0107	Improved Neubauer Haemocytometer.	each



The M-Scan II Vet Biochemistry Analyser

A new concept in veterinary clinical chemistry.

The M-Scan II Vet Biochemistry Analyser offers simple and efficient clinical chemistry analysis in a compact laboratory system. It is also flexible, providing up to 19 parameters with the choice of running only the parameters you need for a single test or multi test profiles.



WD1170

Features:

- 3 Simple steps to a complete chemistry profile.
- Accurate results in minutes from 90ul serum or plasma.
- Compact design for in-practice use.
- Up to 19 parameters to choose from.
- Economical to run.
- Robust and reliable - not temperature sensitive.
- Connection to most in-practice client management systems.
- Connects to the MS4₅ Vet Haematology analyser for a single A4 print of the combined results.



5 Year Parts Warranty

Woodley analyser customers benefit from a permanent 15% discount on all Witness® Diagnostic Kits - see page 21 for full range details.

www.woodleyequipment.com

WOODLEY
EQUIPMENT COMPANY LTD.

www.woodleyequipment.com

WOODLEY
EQUIPMENT COMPANY LTD.

The M-Scan II Vet Biochemistry Analyser

Chemistry Reagents:

Reagent rotors offer total flexibility to choose only the parameters you need for a single test or a multi test profile.

- The Select 10 rotor allows you the flexibility to choose up to 10 tests from the 19 parameters available. Sold in boxes of 50 producing 500 tests in total.
- The Vet 16 rotor is also available in boxes of 50 giving 800 test results.

Species:

Dog, cat, cow, parrot, horse, sheep, pig, goat and two programmable on request.

Parameters:

Evolving test panels for better diagnostics with 19 parameters. Currently available:

ALP, GGT, AST, ALT, Amylase, BUN, Glucose, Phosphorus, Calcium, Albumin, Uric Acid, Cholesterol, CK, Creatinine, Total Bilirubin, Total Protein.

Calculated parameters: GLOB, BUN/Creat Ratio, ALB/GLOB Ratio.

Soon available : T4, Na+, K+ CL- and TCO₂.

Warranty:

Included in the purchase price is 1 year comprehensive warranty with parts covered for 5 years in total.

Panels:

19 parameters in a range.
6 specific chemistry profiles or a complete single profile.

- Mini
- Hepatic
- Renal
- Total
- Pre-anaesthetic
- General Health



The 'Vital' Wet Chemistry System

The 'Vital' Biochemistry Analyser is a compact, in-practice analyser offering outstanding technology and performance. The 'Vital' uses liquid stable reagents and can run a wide range of tests from the standard GHP assays to T4, phenobarbitone, bile acids and many more.

The 'Vital' works at up to 150 tests per hour without compromising on quality. The 'Vital' also offers as a "dry" module, giving all the benefits of the performance of electrodes but without the wastage of "flushing fluids" constantly.

Completely Automated Biochemistry Solution

WDJ20010 / WDJ20060 (with ISE)

Features:

- Versatile, accurate and easy to use.
- Almost no daily maintenance.
- Completely automated including results printout.
- Cost effective with comprehensive flexible profiles and extensive single test menus including T4 and phenobarbitone, fructosamine, lipase and bile acids.
- Uses liquid stable reagents so minimal wastage.
- Works up to 150 tests per hour.
- Can include a dry ISE module that measures Na, K, and Cl.
- Tests urine and other fluids as well as blood.
- Featuring a complete quality control package to assure correct results.
- Easy calibration with the press of a button.



Woodley analyser customers benefit from a permanent 15% discount on all Witness® Diagnostic Kits - see page 21 for full range details.

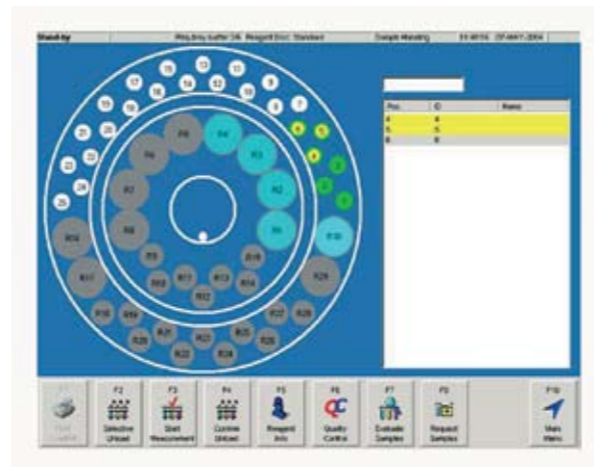
The 'Vital' Wet Chemistry System

Reagent Range:

Reagents come pre-loaded into bottles designed to fit straight onto the 'Vital' system. In liquid stable format, the reagents can remain on the system at all times - ready when you need them.

Tests Available

- Albumin
- Bilirubin Direct
- Bilirubin Total
- Calcium
- Cholesterol
- Creatinine
- Glucose
- Magnesium
- Phosphate
- Total Protein
- Triglyceride
- Urea
- Urate
- ALT
- ALP
- Amylase
- AST
- Butyrate
- CK
- GGT
- GLDH
- LDH
- Lipase
- Chloride
- Potassium
- Sodium
- T4
- Bile Acids
- Phenobarbitone
- Fibrinogen
- Fructosamine



This list is not exhaustive but illustrates routine tests run in-practice.

Warranty

- 1 year full warranty included in purchase price.

Laboratory Quality Biochemistry In-Practice

www.woodleyequipment.com

WOODLEY
EQUIPMENT COMPANY LTD.

i-STAT® Portable Clinical Analyser

The i-STAT® is a truly portable critical care analyser giving blood gases, electrolytes and clinical chemistry parameters. Running on lithium batteries, this analyser can be used patient-side or in the field. Holding 50 patient records in its memory the i-STAT® can recall stored data at the touch of a button. Results are obtained in 2 minutes, using approximately 90ul of whole blood, and can be output to the optional printer. The large range of self-calibrating cartridges includes parameters such as Ionised Calcium, Lactate and Activated Clotting Time.

WD0201

Features:

- Fast - Reliable Results in 2 minutes.
- Portable - Battery Operated.
- Automatic calibrant check on every sample.
- Maintenance - No routine maintenance necessary.
- Cost Effective - Pay for only the test you run.
- Wide Test Menu - Multiple Test results per Cartridge.



1. Fill the cartridge with 3 drops of sample



2. Insert cartridge



3. Critical results in 2 minutes for immediate therapy decisions

Service Contract

- An unlimited number of breakdown repairs.
- Parts included.
- Carriage paid.
- A loan machine.
- Valid for 12 months.

Woodley analyser customers benefit from a permanent 15% discount on all Witness® Diagnostic Kits - see page 21 for full range details.

www.woodleyequipment.com

WOODLEY
EQUIPMENT COMPANY LTD.

The New i-STAT® 1 Portable Clinical Analyser

Offering all the same benefits and cartridges of the i-STAT but with the added bonus of the CHEM8+ cartridge, glucose strips and an individual cardiac troponin I test. The i-STAT 1 is also ergonomically enhanced and has increased storage capability to 5,000 results!

WD0201A

CHEM8+ Cartridge

- Haematocrit (HCT)
- Haemoglobin (Hgb)
- Blood Urea Nitrogen (BUN)
- Creatinine
- Ionised Calcium (iCa)
- Glucose (Glu)
- Chloride (Cl)
- Sodium (Na)
- Potassium (K)
- TC₀₂
- Anion Gap



Service Contract

- An unlimited number of breakdown repairs.
- Parts included.
- Carriage paid.
- A loan machine.
- Valid for 12 months.

Woodley analyser customers benefit from a permanent 15% discount on all Witness® Diagnostic Kits - see page 21 for full range details.

i-STAT® 1 Cartridges Available

CHEM8+ Cartridge WD0226



- Haematocrit (Hct).
- Haemoglobin (Hgb).
- Blood Urea Nitrogen (BUN).
- Creatinine.
- Ionised Calcium (iCa).
- Glucose (Glu).
- Chloride (Cl).
- Sodium (Na).
- Potassium (K).
- TC₀₂.
- Anion Gap.

EC8+ Cartridge WD0211



- Sodium.
- Potassium.
- Chloride.
- BUN.
- Glucose.
- Haematocrit.
- Haemoglobin.
- pH.
- pCO₂.
- TC₀₂.
- HCO₃.
- Base Excess.
- Anion Gap.

6+ Cartridge WD0227



- Sodium.
- Potassium.
- Chloride.
- BUN.
- Glucose.
- Haematocrit.
- Haemoglobin.

CG8+ Cartridge WD0225



- Ionized Calcium.
- Sodium.
- Potassium.
- Glucose.
- Haematocrit.
- Haemoglobin.
- pH.
- pCO₂.
- TC₀₂.
- HCO₃.
- pO₂.
- sO₂.
- Base Excess.

E3+ Cartridge WD0215



- Sodium.
- Potassium.
- Haematocrit.
- Haemoglobin.
- Chloride.

CG4+ Cartridge WD0214



- pH.
- pCO₂.
- pO₂.
- sO₂.
- TC₀₂.
- HCO₃.
- Base Excess.
- Lactate.

Crea Cartridge WD0218



- Creatinine.

ACT Cartridge WD0216



- Cellite-Activated Coagulation Time.

Cardiac Troponin I Cartridge WD0230



- cTnI

G Cartridge WD0219



- Glucose.

Accessories Product Code

Product Code	Description
WD0203	Infrared link (for in-house updates).
WD0204	Infrared printer with cradle.
WD0205	Printer paper roll.
WD0206	Battery (9v lithium).
WD0207	i-STAT control level 1.
WD0208	i-STAT control level 2.
WD0209	i-STAT control level 3.
WD0210	i-STAT control ACT.

* Chem 8+ and troponin I only useable on new i-STAT 1®
** All other cartridges usable on i-STAT® and i-STAT 1®

Refractometer

WD0005

- Adjustable calibration.
- Urine specific gravity.
- Total protein.
- Refractive Index.



Lactate Meter

Accutrend Lactate

WD0001

The meter determines lactate concentrations easily and quickly in whole blood or plasma using the BM-lactate test strips. Results are given in 60 seconds using one drop of blood/plasma. This monitor stores up to 100 test results.

WD0002 BM-Lactate Strips.



Veterinary Glucometer

WD0004

The Prestige Veterinary Glucometer.

- Handheld animal - veterinary validated glucometer.
- Whole blood or serum samples.
- Results in under 60 seconds.
- Supplied complete with 25 test strips.

WD0004
Test Strips



WITNESS® - The Complete Range

Witness is an effective range of diagnostic tests with unbeatable speed, simplicity and accuracy using Rapid Immuno Migration (R.I.M.). R.I.M. is comparable to ELISA testing and offers stability at room temperature storage together with a longer shelf life.

Witness is highly sensitive and specific and two simple steps (with no pre-mixing) is all that is needed for accurate, reliable results. All in just 10 minutes!

WITNESS® - FeLV / FIV

Quick, simple and accurate diagnosis of two of the most serious diseases of cats, Feline Leukemia Virus and Feline Immunodeficiency Virus.



WITNESS® - Relaxin

The first simple, accurate in-practice blood test for pregnancy diagnosis in cats and dogs.



WITNESS® - Dirofilaria

An easy to use in-clinic test that detects the presence of adult dirofilaria immitis antigen in canine blood samples.



WITNESS® - Leishmania

Amazingly simple diagnostic test that allows rapid diagnosis of antibodies to leishmania infantum.



WITNESS® - Parvo

A simple in-practice test that detects all strains of canine parvo virus shed in the faeces.



WITNESS® - Ehrlichia

Detects the presence of Ehrlichia canis antibodies in canine blood samples. Allowing early detection of the virus (appx 15 days).



Flu Detect™ Avian Flu

Detects all 16 sub types of Type A influenza including the deadly H5N1.



SYNBIOTICS®
EUROPE



Canine Product Range

WITNESS® Parvo (5 tests)

Detection of canine parvovirus in faeces. The test kit includes a unique sampling (faecal or rectal) and pipetting system.

⁽³⁾ Internal evaluation / reference technique: haemagglutination.

Sensitivity : 96,7%⁽³⁾

Specificity : 99,5%⁽³⁾

WITNESS® Ehrlichia (5 tests)

Detection of antibodies to Ehrlichia canis.

⁽⁴⁾ Reference to technique: Immuno Fluorescence Sensitivity (n=102), Specificity (n=60).

Sensitivity : 98%⁽⁴⁾

Specificity : 100%⁽⁴⁾

WITNESS® Dirofilaria (10 tests)

The test detects canine heartworm infection in dogs using antibodies directed against specific epitopes of a soluble adult D immitis antigen.

⁽⁵⁾ Sensitivity (n=66): 96%* - 100%** , Specificity (n=678): 98,2%*3-6 adult female worms, **> 6 adult female worms.

Sensitivity : 100%* * ⁽⁵⁾

Specificity : 98,2%⁽⁵⁾

WITNESS® Leishmania (10 tests)

Detection of antibodies to Leishmania infantum in dogs.

⁽⁶⁾ Samples from endemic and non endemic areas.

Sensitivity > 99%⁽⁶⁾

Specificity > 90%⁽⁶⁾

WITNESS® Relaxin (5 tests)

Early diagnosis of gestation based on the detection of the relaxin hormone in serum or plasma of the bitch.

⁽⁷⁾ S. Buff, CERREC, National Veterinary school of Lyon, France, 2001.

**Sensitivity 100%⁽⁷⁾
At 30 days post mating
(27 days after ovulation).**

**Specificity : 100%⁽⁷⁾
At 30 days post mating
(27 days after ovulation).**

Product Code	Description	Box Size
WD1104	Witness® Parvo	(Pack of 5).
WD1105	Witness® Ehrlichia	(Pack of 5).
WD1106	Witness® Dirofilaria	(Pack of 10).
WD1107	Witness® Leishmania	(Pack of 10).
WD1103	Witness® Relaxin	(Pack of 5).

Feline Product Range

WITNESS® FeLV (10 tests)

Detection of p27 capsid antigen present in high concentration in samples from viraemic cats.

⁽¹⁾ E.N.V. Toulouse, E.N.V. Lyon, Dept. Clin. Vet. Sc. Bristol, U.S.D.A., V.M.D.C Utrecht - total n=1787

Sensitivity : 98,6%⁽¹⁾

Specificity : 99,5%⁽¹⁾

WITNESS® FIV (10 tests)

Very early detection of antibodies to FIV thanks to the use of a synthetic peptide which mimics an epitope of the gp40.

⁽²⁾ E.N.V. Toulouse, E.N.V. Lyon, Dept. Clin. Vet. Sc. Bristol, V.M.D.C Utrecht - total n=1474

Sensitivity : 99,2%⁽²⁾

Specificity : 99,3%⁽²⁾

WITNESS® FeLV /FIV (10 tests)

The combination of an FELV and an FIV test on one test device.

WITNESS® Relaxin (5 tests)

Early diagnosis of gestation based on the detection of the relaxin hormone in serum or plasma of the queen.

⁽⁷⁾ S. Buff, CERREC, National Veterinary school of Lyon, France, 2001.

**Sensitivity : 100%
At day 31 days post mating.**

**Specificity : 98%⁽⁷⁾
At day 31 days post mating.**



Product Code	Description	Box Size
WD1100	Witness FeLV	(Pack of 10).
WD1101	Witness FIV	(Pack of 10).
WD1102	Witness FeLV - FIV	(Pack of 10).
WD1103	Witness Relaxin	(Pack of 5).

WITNESS® Relaxin

The only blood test available in the UK for in-practice canine and feline pregnancy detection

- A simple and rapid test.
- Results in 10 minutes.
- A reliable test.
- Early detection of pregnancy.
- Monitoring of unwanted pregnancy.
- Confirmation of foetal resorption.

WD1103



AVIAN Kit Flu Detect

Influenza type A Antigen test kit

Detects all 16 sub-types of Type A Influenza virus - including H5N1.

- A simple and rapid test with definitive results in 15 minutes.
- Extremely sensitive to all influenza A subtypes within 3-5 days post-infection.
- 1000 times more sensitive than other commonly used tests.
- Detection can even precede the appearance of first symptoms.
- Oropharyngeal, tracheal and cloacal swab samples may be used.
- The test strips can be used on farm, diagnostic labs or veterinary practices.
- Increased stability - Strips are stable at room temperature so no need to refrigerate and have a long shelf life.
- Minimum detectability: 10³ EID50/ml.
- Specifically tested on non-AIV antigen preparations: 100%.



WD1110



*Easy to use.
Can be used
on the farm
or in the
Laboratory.*

www.woodleyequipment.com

WOODLEY
EQUIPMENT COMPANY LTD.

E.R.D. - HealthScreen® Urine Tests

Now You Can Detect Even Small Amounts of Kidney Damage

The E.R.D. - HealthScreen® Urine Tests detect small amounts of albumin in the urine ("microalbuminuria"). Microalbuminuria (MA) has been clinically defined as levels of albumin in the urine greater than normal (1mg/dL) and less than overt proteinuria (30 mg/dL) at a standardised specific gravity of 1.010.

Conventional urine tests (urine specific gravity, BUN, creatinine) don't detect kidney damage until ~75% of kidney function is lost.

Discover hidden illness while there is still time for effective treatment.

- Detect albumin at a sensitivity up to 30 times higher than conventional dipsticks, providing the most sensitive measure of kidney damage available.
- Alert you to the presence of kidney damage that could be caused by many common inflammatory, infectious, metabolic and neoplastic diseases.
- Excellent monitoring tools that indicate the severity of disease, treatment success and progression of kidney damage.



Feline WD0057

Features:

- Quick results in less than 5 minutes, allowing additional blood/urine sampling if needed while patient is still present.
- Extremely accurate, no false results.
- Semi-quantitative. shows negative, low, medium, high and very high positive test results.



Canine WD0058

Product Code	Description	Box Size
WD0057	ERD Healthscreen (Box of 10) Feline.	
WD0058	ERD Healthscreen (Box of 10) Canine.	

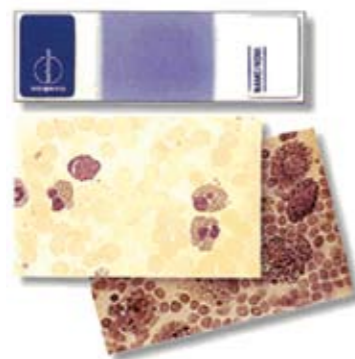
www.woodleyequipment.com

WOODLEY
EQUIPMENT COMPANY LTD.

Clinispin Cytovet Centrifuge

- 4 Place rotor enabling 8 samples per run.
- LED display of speed & time.
- Automatic soft start, speed 0-3500rpm.
- RCF 550 max.
- Audible run finish.
- Automatic soft brake.
- Lid Lock.
- 12 place/24 sample model available.
- 24 months warranty.

WD0321



Pre-stained Slides

Ready-to use, pre-stained slides with standardised dyes (Methylene Blue N and Cresyl Violet Acetate in a chemically pure form), generating consistently high quality blood cell staining, efficiently and cleanly. Can also be used for urine cytology, milk cytology, vaginal examinations and spermatozoal staining.

Available in packs of 50 slides.

Testsimplets WD0102

Dermatophyte Testing

Rapid Vet-D Blue

WD0168

Rapid Vet-D is an in-practice 72 hour test to detect the presence of veterinary dermatophytes in companion animals.

Rapid Vet-D - room temperature incubation and storage of product.

Rapid Vet-D's special formulation relies on only a colour reaction. That means no colony identification is required.

If the Rapid Vet-D turns red it is positive for dermatophytes, if it stays amber it is negative.
It's that simple!

**Rapid
Dermatophyte
Test for
Dogs, Cats,
Rabbits
& Horses**



CLINISPIN 842VET
horizon

Centrifuges

ONE CENTRIFUGE DOES IT ALL! 2ml serum, haematocrit and QBC tubes all on one rotor.

The Clinispin horizon 842VET is the most compact of the Performance Series centrifuges. The 842VET offers control over almost every aspect of the unit's operation from variable acceleration and deceleration to easy time and speed input. High speed and force capability produces rapid separation and greatly reduces processing times. Save settings in one of ten memory locations and recall them at the touch of a button.

WD0347



Features:

- **Electronic Timer with Display.**
Selectable from 1 to 99 minutes, hold feature, (+/- 1%).
- **Electronic Speed Control with Display.**
Easily set the running speed by RPM or RCF.
- **Brushless DC Motor.**
For smooth and quiet operation with no routine maintenance.
- **Variable Acceleration and Deceleration.**
Customise the run from start to finish.
- **End-Of-Run Audible Indicator.**
Sounds when the rotor has stopped to inform the operator the cycle is complete.
- **Variable Speed.**
Precision variable speed control gives the operator the ability to select from 500 RPM to the maximum rotor speed in 50 RPM increments.
- **Quiet Operation and Low Vibration.**
Double-encased motor and unique "stability mount" assure quiet performance and low out-of balance vibration.

Combination Veterinary Rotor:

supplied as standard to accommodate 2ml serum tubes, QBC tubes and Haematocrit tubes on the same rotor. Also supplied as standard with haematocrit sealant, reader and capillaries.

CLINISPIN 642E
horizon

Centrifuges

The Clinispin horizon 642E is a single speed centrifuge designed for the Veterinary practice or small lab. Its compact design minimises its footprint, leaving more room on your worktop. The unique horizontal rotor design allows for the test tubes to be inserted at a convenient 45 degree angle, they are then gently rotated to a full horizontal position as the motor accelerates.

- Compact design.
- Full Horizontal Separation.
- Easy operation.

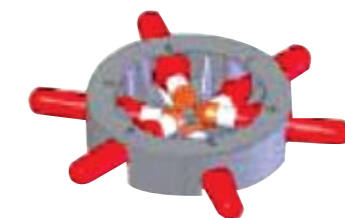
Features:

- **Electronic Timer.**
Selectable from 1 to 30 minutes, (+/- 1%).
- **Small footprint.**
Takes up only 30cm² of space.
- **Brushless DC Motor.**
For smooth and quiet operation with no routine maintenance.
- **Cool Running.**
Unique design allows for cool operation even under the heaviest workloads.
- **Single Speed.**
- **Quiet Operation and Low Vibration.**
Double-encased motor and unique "stability mount" assures quiet performance and low out-of balance vibration.

WD0346



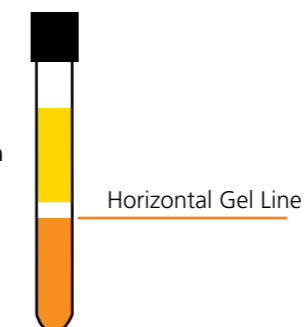
Horizontal Rotor (Standard)



*Supplied as standard with:
Horizontal rotor
Set of 10ml adaptors (6)
Set of 5ml adaptors (6)*

Why Horizontal Separation?

A horizontal rotor produces better separation with a tighter gel line eliminating remixing and re-spins



Centrifuges

Clinispin Micro WD0315



Features:

- Portable.
- Mains or 12v battery power option.
- 6 x 1.5/2.0ml & 12 x 0.5ml rotors included.
- Variable speed 0-7,000 rpm.
- Brushless motor.
- 12 months warranty.

Clinispin Hct WD0316



Features:

- Portable.
- Mains or 12v battery power option.
- Dedicated 4 place haematocrit rotor.
- Fixed speed 11,000 rpm.
- Brushless motor.
- 12 months warranty.

Centrifuge Consumables

Product Code	Description	Quantity
WD0301	Microhaematocrit tubes - plain.	100
WD0302	Microhaematocrit tubes - heparin.	100
WD0303	Capillary sealant.	1
WD0304	Hand held haematocrit reader.	1
WD0305	1.5ml Eppendorf centrifuge tubes.	100
WD0306	2ml serum tubes.	100
WD0307	2ml serum gel tubes.	100
WD0332	2ml EDTA tubes.	100
WD0331	2ml Lithium Heparin tubes	100
WD0324	0.5ml Eppendorf Centrifuge tubes	100

The New Optika Biological Microscope Range

Striking the right balance between price and quality!



Available in Binocular, Trinocular & Digital Versions Suitable for Photography & Video Applications.

Modern Microscopes for Everyday Use.

The New Optika Microscope Range

The new Optika biological microscopes offer outstanding quality whilst being robust and reliable. This new series of microscope strike just the right balance between price and quality. With a choice of 4 models these modern, ergonomic microscopes can be used successfully in all situations.

Features:

- Optical system and objectives:
- 160mm standard optical system.
- Field diameter of 20mm.

Microscope Stand:

- Made from die cast aluminium.
- Macro and micrometric focusing (graduated 0.002mm) with coaxial controls.
- Adjustable focusing tension and upper sliding stop

Illuminator:

- The illuminating system consists of an LED illuminator.
- Luminous intensity regulation takes place through a rheostat located on the right hand side of the microscope base.

Heads:

- Available in binocular and in trinocular versions suitable for photography and video applicatons.
- Both heads equipped with interpupillary distance control (51-78mm).
- Dioptic compensation
- WF10x/20mm eyepieces also suitable for people wearing spectacles.
- All heads are 360° rotatable and 30° inclined.

Condenser:

- Included in the package is an Abbe type condenser.
- Centred via a double-control system and adjusted in height through a rack-and-pinion mechanism.
- Fitted with an adjustable iris diaphragm aperture with graduated reference scale.



**Optika 20
WD0520**



**Optika 25
WD0521**

Technical Features:

Model	Head	Eyepiece	Objectives	Revolver	Stage	Focusing	Condenser	Illuminator
Optika 20	Binocular 360° rotating 30° inclined	Wide Field 10X / 20 mm	Achromatic 4x, 10x, 40x, 100x (oil immersion)	Quadruple	Double layer with mechanical sliding stage, 160x142 mm, moving range 76x52 mm	Coaxial coarse and fine focusing system, with focusing stop mechanism	1.25 N.A. Abbe type, with centring system	White LED, non-rechargeable, with brightness control
Optika 25	Trinocular 360° rotating 30° inclined	Wide Field 10X / 20 mm	Achromatic 4x, 10x, 40x, 100x (oil immersion)	Quadruple	Double layer with mechanical sliding stage, 160x142 mm, moving range 76x52 mm	Coaxial coarse and fine focusing system, with focusing stop mechanism	1.25 N.A. Abbe type, with centring system	White LED, non-rechargeable, with brightness control
Optika 30	Binocular 360° rotating 30° inclined	Wide Field 10X / 20 mm	Plan Achromatic 4x, 10x, 40x, 100x (oil immersion)	Quadruple	Double layer with mechanical sliding stage, 160x142 mm, moving range 76x52 mm	Coaxial coarse and fine focusing system, with focusing stop mechanism	1.25 N.A. Abbe type, with centring system	White LED, non-rechargeable, with brightness control
Optika 35	Trinocular 360° rotating 30° inclined	Wide Field 10X / 20 mm	Plan Achromatic 4x, 10x, 40x, 100x (oil immersion)	Quadruple	Double layer with mechanical sliding stage, 160x142 mm, moving range 76x52 mm	Coaxial coarse and fine focusing system, with focusing stop mechanism	1.25 N.A. Abbe type, with centring system	White LED, non-rechargeable, with brightness control



**Optika 30
WD0522**



**Optika 35
WD0523**

The Optika DM-20 Biological Digital Microscope

An advanced digital binocular microscope with excellent optical and mechanical characteristics making it a point of reference in the field of digital microscopy. The digital camera mounted on its head has a 3.2m pixel resolution and all objectives are plan achromatic.



WD0524

Technical Features:

Head:	Digital, Binocular, 360° rotating, 30° inclined
Eyepieces:	WF10X/20mm
Nosepiece:	Quadruple, reversed
Objectives:	PLAN Achromatic 4x, 10x, 40x, 100x (oil immersion)
Working Stage:	Double layer with mechanical sliding stage, 160x142mm, mov. range 76x52mm
Condenser:	1.25 N.A. Abbe type, with centring system
Focusing System:	Coarse and fine with different axis, with focusing stop mechanism
Illumination:	White LED, non-rechargeable, with brightness control
Digital Camera	
Resolution:	2048x1536pixels, 3.2M
Output:	USB 2.0 port
Software:	OPMIAS (Optika Micro Image Analysis Software)
Packing:	Carton box with inner foam

Optikam Pro 3 High Resolution Digital Video Camera

A C-mount system for video and still-image capturing at HIGH resolution. An Optical adapter is included and can be used to connect it to the eyepiece tube of the microscope.



WD0525

Technical Specification:

Resolution	2048 x 1536 pixels (3.2 Mpixel)
Sensor	CMOS 1/2"
Pixel Size	3.2 µm x 3.2 µm
Imaging Area	6.55 mm x 4.92 mm
Frame Rate at Full Resolution	6 frames/sec
Frame Rate at Half Resolution	21 frames/sec
Optical Format	1/2"
Aspect Ratio	4:3
S/NRatio	43 dB max
Dynamic Range	61 dB
ADC	10 bit
Data Output (Uncompressed Video)	3x8 bit
Exposure Range	0.2 -231 msec
Sensitivity	1.0 V/Lux-second
System Requirements	Windows XP SP2 or later, USB 2.0 port
Software	Optika Vision® software package, TWAIN interface
Capture Features	Continuous auto white balance, continuous auto exposure, averaging, subsampling (decimation)
Included with the camera	3 m USB cable, C-mount lens adaptor, adapter for stereomicroscope, 76x24mm micrometric calibration slide, C-mount cap, box



WD0526



Microscope Accessories



Microscope Service Kit

WD0383

Includes:

- Lens Cleaning Fluid. **WD0384**
- Air Duster. **WD0385**
- Cotton Applicators. **WD0386**
- Microglide Lubricant. **WD0387**
- Lint-free lens paper. **WD0388**
- Illustrated service instructions. **WD0389**

Items available separately - SEE CODES

Microscope Consumables

Product Code	Description	Pack Size
WD0390	Microscope slides - plain.	72
WD0391	Microscope slides - frosted.	72
WD0392	Halogen Bulb 20w.	each
WD0399	Halogen Bulb 10w.	each
WD0403	Halogen Bulb 30w.	each
WD0393	Coverslips 22mm x 22mm.	50
WD0395	Chinagraph pencil.	1
WD0396	Immersion oil.	10ml
WD0397	Potassium Hydroxide (KOH).	30ml
WD0406	McMasters Chamber.	1

Bulbs available for all models of microscopes.
Phone Woodley for more information or to order

Servicing

Woodley can service and repair most makes of microscopes.

Quotes are available on request. Please contact us for advice regarding packing and shipping of microscopes.

Microscope Accessories

Atlases

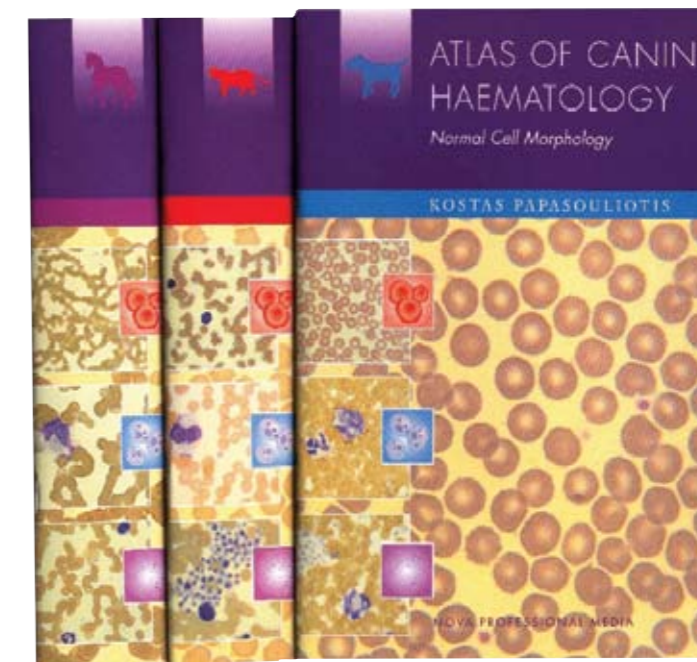
Haematology

Written exclusively for Woodley Equipment Company Ltd by Kostas Papasouliotis DVM PhD DipRCPath MRCVS (Bristol Vet School), these atlases are an excellent microscope-side reference guide offering normal cell morphology

- Erythrocytes.
- Neutrophils.
- Lymphocytes.
- Eosinophils.
- Basophils.
- Thrombocytes.
- Methodology: Microhaematocrit.
- Methodology: Blood smears.

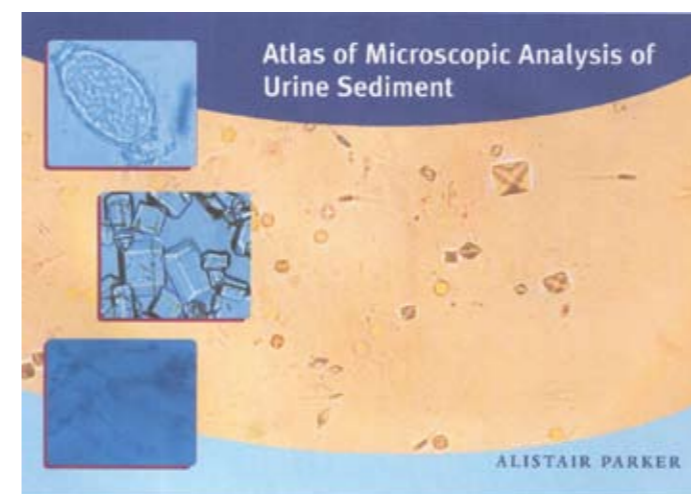
Titles Available

Canine	WD0451
Feline	WD0452
Equine	WD0453
Urinalysis	WD0454



POSTER FORMATS

Ecto-parasites of Dog & Cat **WD0457**



Urinalysis **WD0454**

Written exclusively for Woodley Equipment Company Ltd by Alistair Parker (Nationwide Laboratories), this microscope-side reference guide is the fourth in our series.

- Sample collection.
- Physical characteristics.
- Examination of sediment.
- Photographic identification of casts.
- Contaminants in urine sediment.

Endoscopes

VETSCOPE II

The MDS Vet-Scope endoscope offers cutting-edge fibreoptic technology at a fraction of the cost of conventional endoscopes. This new instrument uses plastic fibres, rather than glass. More affordable, more durable and incredibly good optics. Use this endoscope exactly as you would a standard endoscope using the supplied, battery-powered light source, or, use it with your otoscope power source. Diagnose chronic vomiting, foreign bodies and collapsed tracheas in dogs and cats, and even use it as an upper airway scope in horses.

Standard Kit

VT-24 and VT-36 fibreoptic scopes with 24" or 36" X 5.8mm flexible shafts are capable of bending in any direction. The shaft can bend to 3" radius and has a "memory" that maintains its shape. The eyepiece is focusable to within 0.5" of the target.

Each kit comes complete with a portable, Xenon lightsource (batteries included) with extra bulb and custom, foam-lined carrying/storage case.

'Vetscope' 24" Package (Inc. Case, Biosleeve, 3-prong grasper & Insufflator)	1	WD0569
'Vetscope' 36" Package (Inc. Case, Biosleeve, 3-prong grasper & Insufflator)	1	WD0570
5.8mm x 24" Vetscope	1	WD0571
5.8mm x 36" Vetscope	1	WD0572
Flexible Biosleeve to fit 24" Vetscope (6mm)	1	WD0573
Flexible Biosleeve to fit 36" Vetscope (6mm)	1	WD0574
23" x 1.8mm Biopsy Forceps	1	WD0575
23" x 1.8mm 3-prong grasper	1	WD0576
30" x 1.8mm Biopsy Forceps	1	WD0577
30" x 1.8mm 3-prong grasper	1	WD0578
Bulb Insufflator	1	WD0579
Mirror Attachment	1	WD0580
Magnet Attachment	1	WD0581
Halogen Bulb	1	WD0582

Plastic fibre technology -
No problems with
glass fibre breakage



WD0569
**24" Vetscope Package
(including accessories)**

WD0570
**36" Vetscope Package
(including accessories)**

**Cutting Edge
Fibreoptic
Technology**

3 Metre Gastroscope System WD0551

- 4 way articulation.
- 10mm diameter.
- 2.8mm working channel.

1.35 Metre Gastroscope System WD0552

- 4 way articulation.
- 8mm diameter.
- 2.2mm working channel.

Rigid Arthroscope

- WD0564 180mm x 2.9mm.
- Built in illumination (power handle).

Flexible Micro-fibre scopes

- WD0562 25cm x 1.40mm
WD0563 50cm x 1.40mm
- Built in illumination (power handle).



Otoscope System and Accessories

- CCD Camera (Motic 480). WD0419
- Moticam 480 + c-mount endoscope adaptor. WD0557
- Focusing c-mount adaptor. WD0412
- Flat screen monitor. WD0556
- 3-prong grasper. WD0567
- Biopsy forcep. WD0566
- 150 W Halogen light source. WD0558
- Battery operated light source. WD0559
- Replacement bulb for 150w light source (21v) WD0565
- Cleaning Brush. WD0568
- 5mm with built in 2mm working channel. WD0560
- 3mm 'Piggy back' 2mm working channel. WD0561

Endoscopes

1 Metre Bronchoscope System WD0554

- 6mm diameter.
- 1.8mm working channel.
- 2 way articulation.

1 Metre Bronchoscope System WD0553

- 8mm diameter.
- 2.2mm working channel.
- 2 way articulation.

MDS Gastroscope/ Bronchoscope Systems

Come complete with:

- Sturdy carry case.
- 150W halogen light source with fluid light guide (where applicable).
- Biopsy forceps.
- 3 prong graspers.
- Cleaning brush.

Moticam 480 System Endoscope Adaptor (Focusing C-Mount) WD0557

Simply connecting the Motic 480 camera can transform your endoscope allowing images to be viewed on a TV screen or PC. Captures images on VHS or digitally respectively.



Vet Biolog II ECG

WD0851/0867

The Biolog II is a complete 12 lead ECG capable of recording one, six or twelve channels of diagnostic ECG data. For an instant single channel ECG, simply press the Biolog to the patient's chest for a quick "window on the heart". Or connect the 6 lead or 12 lead ECG cable for a complete diagnostic ECG. The Biolog ECG is mobile, compact and simple to use. Ideal for emergency situations, the Biolog is just as practical for routine on-the-spot checks as it is for acquiring and analysing 12 lead ECG data.

Pocket sized 12 lead simultaneous ECG

- Portable, convenient, easy to use ECG monitoring.
- Rapid single lead ECG acquisition via direct chest placement or single lead cable.
- Diagnostic ECG monitoring via the 6 and 12 lead ECG cables.
- Download ECG's to Vet Cardio View Software.
- Separate printing (plain paper), via MPI printer interface.
- Transtelephonic capabilities.
- High definition LCD screen with back lighting.
- Two heart ranges for large and companion animals.
- Battery status bar on screen.
- Infra-red linked companion printer interface with 25 and 50mm/second print speeds.
- Acquires and stores in memory 5 to 200 seconds of a single lead via direct thorax placement or via single lead animal cable.
- Acquires and stores in memory 5 to 80 seconds of rhythm strip followed by a simultaneous 6 lead animal cable.
- Supplied with leads and software.



Accessories

- WD0851 Vet Biolog II with 6 lead cable, MP13 Interface, printer and carrycase.
- WD0867 Vet Biolog II with 6 lead cable, cardioview software and carrycase.

- WD0869 Printer kit with MPI 3
- WD0870 Equine kit including straps, cables and electrodes.
- WD0872 Single lead cable.
- WD0873 Cardioview Software.
- WD0879 12 lead cable.

Vet/Ox® G2 Digital Monitor™

All oximeters are NOT created equal. Good signal processing results start with good raw data. The Vet/Ox® G2 Digital™ Monitor is unique because it's the only oximeter to use a digital sensor. The result is a stronger, cleaner signal that provides 'Vital' signs at 'Vital' times.

The only Oximeter to use a Digital Sensor

- Eliminates errors due to motion and electronic noise.
- Finds and holds a weak pulse.
- Excellent low perfusion performance.

WD0675



Features:

- A multiparameter monitor combining high performance SpO₂, pulse rate, temperature and respiratory rate.
- Uses a patented Light-To-Frequency (LTF) converter to digitise the signal in the sensor.
- Incorporates advanced Fast Fourier Transfer (FFT) signal processing algorithm.
- Veterinary-specific sensor designs.

- WD0676 Belt clip.
- WD0677 Cage mount.
- WD0678 IV Pole mount.
- WD0679 Digital sensor. Large Equine "C" Clamp.
- WD0680 Digital sensor. Lingual "Y" without clip.
- WD0681 Digital sensor. Reflectance.
- WD0682 Digital sensor. Standard "C" Clamp.
- WD0683 Patient Cable, extension 5ft.
- WD0684 Sensor Clip, small/medium Lingual.
- WD0685 Temperature Probe.

Patient Monitoring

Capnograph - N85-1

This handheld Capnograph delivers accurate end tidal CO₂ values in a digital display and waveform display. Innovative optical bench enhances stable, accurate measurements. Low sample flow rate of 50ml/min allows monitoring on a wide patient range without compromising response time. Includes the trusted Nellcor pulse oximetry technology.

- Intubated or non-intubated ETCO₂ monitoring.
- Capnograph waveforms and trends.
- AC & battery operated.
- User-adjustable alarms.
- Data output/printing.
- Operates in high humidity conditions.
- SpO₂ graphical trends and plethysmographical waveform.

WD0604



Fitted with Microstream Airway CO₂ Monitoring Adaptors

For use on the N85-1. **WD0605**

Optimal performance in any position. Lengthens the operational life of the Filterline sampling lines. Fast response time.

Deadspace reduction:

Patients > 2kg	5.5ml
Patients <2 kg	ET 2.5mm: 0.23ml
	ET 3.0mm: 0.29ml
	ET 3.5mm: 0.40ml

Filterline Sampling Lines

For use on the N85-1.

Filter facilitates the evaporation of moisture and secretions. Filtration technique eliminates the need for water trap. The 0.45-micron pore size of the filter prevents bacterial cross-contamination. Filter lines and nasal filter lines available.

WD0605

N65-1 Handheld Oximeter

This handheld quality oximeter, is a non-invasive spot-check measurement of O₂ saturation (0-100%) and pulse rate (20-250bpm). It also displays a vertical bar graph amplitude indicator, pulse search indicator and low battery indicator.

The N65-1 takes 4 x AA Alkaline batteries giving approx 19 hours continual use. It captures patient data and prints via an infrared printer (optional accessory). and comes complete with 'VETSAT' sensor.

Oximeter Accessories

Vetstat Sensor

WD0654 Vetsat Sensor.

Also available

Vettox 4404 Accessories

WD0656 C-clip sensor.

WD0657 Lingual sensor.

WD0658 Reflectance sensor.

WD0659 Respiratory sensor.

WD0660 Temperature sensor.

WD0651



42

www.woodleyequipment.com

WOODLEY
EQUIPMENT COMPANY LTD.

Patient Delivery Systems

Vet/IV 2.2 Infusion Pump

This light weight (2.2lbs) and portable iv pump hangs from a cage or mounts on an iv stand and pumps intravenous fluid or parenteral nutrition. It is easy to use, allowing programmable rate and time OR rate and volume or you can use the 10 pre-programmed drip rates.

Uses Baxter giving sets or can be recalibrated for other lines.

Benefits

- PORTABLE - Battery or AC powered.
- EASY TO USE - Intuitive user menu.
- WIDE APPLICATION RANGE - From very small to very large volumes.
- SAFE - Alarms for critical messages.
- VERSATILE - Cage mount and IV pole mount.

Features

- Weighs only 2.2 pounds.
- Rechargeable battery life up to 8 hours, or mains power
- Pre-program up to 10 different drip rates.
- Program rate and time (it calculates volume) OR rate and volume (it calculates time).
- Piggyback compatible.
- Flow rate range from 0.1 to 999ml/hr.
- 3 pressure settings for different patient conditions to overcome or help prevent occlusions.
- Infusion sets with one injection port **WD0766**

WD0753



Alaris Syringe Pumps

Pumping pressure monitoring system with added benefit of user adjustable pressure settings. It is simple to use & operate with large illuminated display. It takes 5-100ml syringes, has a comprehensive flow rate 0.1- 1200 ml/hour and the user can set bolus dosages.

WD0767

Servicing

Woodley can now service and repair the following infusion pumps:

ALARIS, BAXTER, Vet/IV 2.2

www.woodleyequipment.com

WOODLEY
EQUIPMENT COMPANY LTD.

43

WOODLEY

EQUIPMENT COMPANY LTD.

OLD STATION PARK BUILDINGS . ST. JOHNS STREET
HORWICH . BOLTON . LANCASHIRE . BL6 7NY

Tel: +44 (0)1204 669033 Fax: +44 (0)1204 669034

Email: sales@woodleyequipment.com

www.woodleyequipment.com

Pricing

Every effort is made to prevent any printing errors in our price list. If one should occur, we will advise you when ordering and proceed at the corrected price. The wide selection of products & manufacturers within the Woodley range result in prices being continually reviewed. Please confirm latest prices with our sales office. Prices are correct at the time of going to press. We reserve the right to alter prices in accordance with manufacturers increases.

Prices

Prices charged will be those ruling at the date of dispatch. All prices are exclusive of VAT & Carriage.

Property & Risk in the goods

Risk in the goods will pass to the buyer on delivery. The property in the goods shall not pass to the buyer until the invoice has been paid in full.

Returned Goods

Woodley is under no liability to accept any goods for return e.g. surplus stock, ordering errors, but where it is agreed in writing, a 15% handling charge may be applied to the goods returned. Returns will only be accepted with a written authorisation form available from Woodley. Credit will not be issued for goods returned in an un-saleable condition. Goods sold on sale or return basis will be returned at the expense of the customer. Refrigerated reagents are non-returnable.

Items not listed

Non-stock items specifically ordered to customer's requirements would only be accepted back for credit where Woodley has made an error.

Claims

No claims can be entertained for damage or deficiency unless our office is notified in writing within the times specified: Non-delivery – within 14 days from date of invoice. Damage or deficiency – within 24 hours from receipt.

Accounts

Payment is net 30 days from date of invoice. Woodley has the right to claim and be paid interest at the rate of 4% per annum above the Base Rate as quoted by Barclays Bank plc. on invoices which remain unpaid after their due date.



WOODLEY
EQUIPMENT COMPANY LTD.



OLD STATION PARK BUILDINGS . ST. JOHNS STREET
HORWICH . BOLTON . LANCASHIRE . BL6 7NY

Tel: +44 (0)1204 669033 Fax: +44 (0)1204 669034

Email: sales@woodleyequipment.com

www.woodleyequipment.com

wec/uk/003v/0308

