



Product Catalog | ver. 7.0



"The healthy coexistence of people and animals through the control of disease"

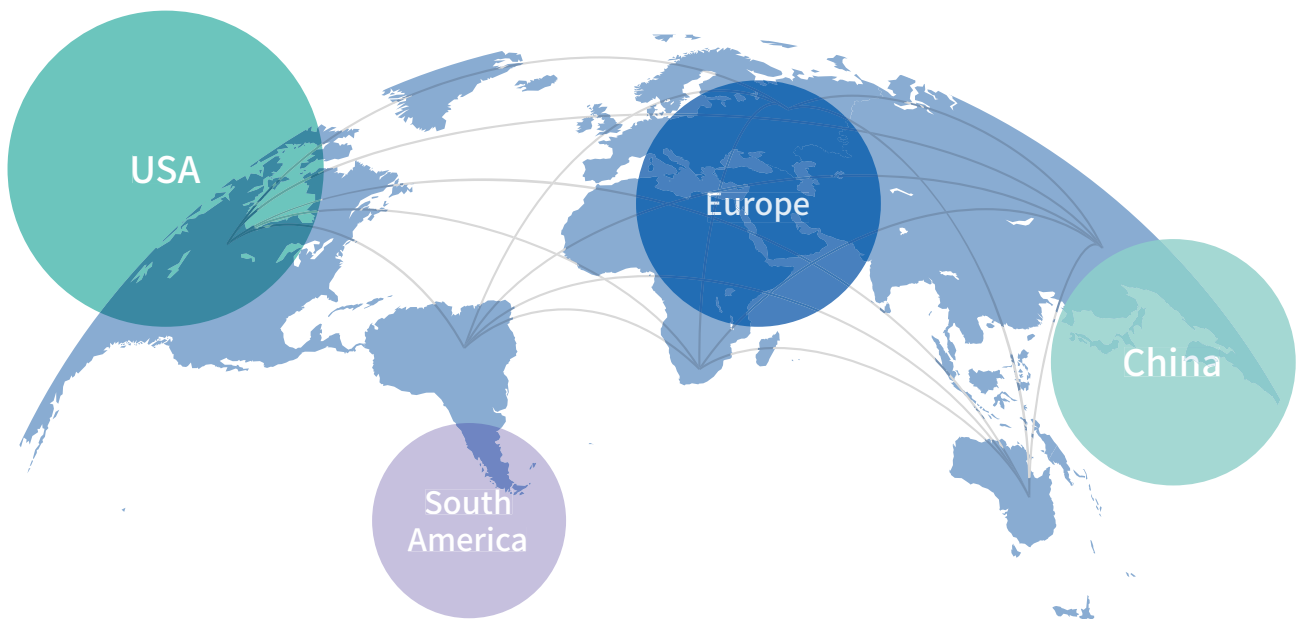
All living things are exposed to diseases during their life, and mankind has developed diagnostic tests and medicines for treatment of many of these diseases. There still remain diseases that we have not managed to overcome, and new diseases continue to emerge.

Diagnostics is the first step needed to manage these diseases. Early and accurate detection is very important for administering suitable treatment, as well as the prevention and control of the diseases spreading through a population.

BIONOTE products play a central role in the business of disease diagnostics. With its expertise in detection techniques, continual research and development and proven ability to produce new and innovative diagnostic products, BIONOTE will continue to grow.

The BIONOTE dream is to assist in achieving a healthy life for people, animals and all living things, by trying to create a society which has "The healthy coexistence of people and animals through the control of disease".

BIONOTE has distribution channels in over 80 countries globally



INTRODUCTION

BIONOTE, Inc. was established in the beginning of 2003, and is considered a pioneer of in-vitro Diagnostics for veterinary needs. BIONOTE delivers innovative and creative solutions for our customers improving their vet healthcare. BIONOTE has its own automated facility to manufacture a wide range of high quality products developed by a highly competent R&D center. BIONOTE has manufactured diagnostic products in accordance with ISO 9001:ISO13485 certification, and has expanded overseas sales network in over 80 countries and is still continuing to grow.

HISTORY

2003
~2008

- 2003. 03 Anigen, Inc. established
- 2003. 11 Acquired animal medicine import license
- 2003. 12 Acquired animal medicine manufacturing industry permission
- 2004. 09 Acquired ISO 9001:2000 TUV certification
- 2006. 04 Canine Distemper virus antibody diagnostic kit patent acquisition
- 2006. 04 Canine Parvovirus antibody diagnostic kit patent acquisition
- 2006. 06 Venture business certification (No.061627021-01133)
- 2006. 07 Technical innovation medium and small enterprises certification (No.6065-1216)
- 2007. 09 H5 and general pathogenic avian influenza virus antigen diagnostic
- 2007. 11 Name change of Anigen, Inc. to Animal Genetics, Inc.
- 2007. 12 Winner of the Animal medicine manufacturer self-regulation checking system Prize
- 2008. 02 World's first influenza H3N2 type confirmation assay development
- 2008. 07 Novel canine influenza viruses and vaccine patent acquisition
- 2008. 12 Winner of the Animal medicine manufacturer self-regulation checking system Prize

2009
~2015

- 2009. 01 Anigen AIV Ab ELISA knowledge economics department new product certification (NEP) acquisition
- 2009. 02 Name change of Animal genetics, Inc. to BIONOTE, Inc.
- 2009. 05 Food & Drug Administration medicine manufacturing industry permission acquisition
- 2009. 12 ISO 2003:13485 TUV certification acquisition Anigen Rapid Canine Heartworm Ag Test Kit USDA licensed
- 2011. 01 Acquisition by Alere
- 2012. 02 Built the 2nd building for Manufacturing, Warehouse, R&D lab.
- 2012. 04 Registered International Patent (PCT) for "A Novel Canine influenza virus and Vaccine"
- 2013. 02 AniGen TB-feron ELISA kit was assigned as an official diagnosis method for bovine tuberculosis eradication program in Korea
- 2014. 11 Spun off as an independent company from Alere, Inc. (USA)
- 2014. 12 Expanded Manufacturing facility
- 2015. 11 Expanded office and laboratory by moving to a new building

2016
~

- 2016. 09 Launched Vcheck F, a fluorescence device for animals
- 2018. 04 Research facility BL3 (Biosafety Laboratory) Room certified for the first time by the government
- 2020.06 Developed NowCheck COVID-19 Ag/Ab Test (CE certification)
- 2020.06 Development of NowCheck COVID-19 Ag/Ab Test (CE certified)
- 2022.09 Launched Vcheck M, State-of-the-art POC molecular system
- 2022.12 Vcheck F global cumulative sales passes 16,000 units (World's best selling fluorescence immunoassay analyzer)

CONTENTS

Antibody Titer	CPV Ab 3.0, CDV Ab 3.0	_06
Canine Diarrhea	CCV Ag	_08
	CPV Ag	_09
	Giardia Ag	_10
	CPV/CCV Ag	_11
	CPV/CCV/Giardia Ag	_12
	CPV/CCV/Giardia Ag 2.0	_13
Canine Respiratory	CDV Ag	_14
	CIV Ag	_15
	CDV/CAV Ag	_16
	CIRD-3 Ag	_17
Canine Vector-borne / Others	C.Brucella Ab	_18
	Canine Babesia Ab	_19
	CHW Ag 2.0	_20
	E.canis Ab	_21
	Leishmania Ab	_22
	Rabies Ag	_23
	Total IgE	_24
	E.canis/Anaplasma Ab	_25
	CaniV-4	_26
	CaniV-4 (Leish)	_27
Feline Diarrhea	FCoV Ab	_28
	FCoV Ag	_29
	FPV Ag	_30
	FCoV Ag/Ab	_31
	FeliD-3	_32
Feline Respiratory / Others	FCV Ag	_33
	FHV Ag	_34
	Toxoplasma Ab	_35
	FHW Ag/Ab	_36
	FIV Ab/FeLV Ag	_37
	FIV Ab/FeLV Ag 2.0	_38
	FeliCheck-3	_39

CPV Ab 3.0, CDV Ab 3.0

General Information

Purpose : Titration of canine IgG antibody against Canine Parvovirus (CPV) or Canine Distemper virus (CDV)

Principle : Immunochromatographic assay

Specimen : Canine whole blood, plasma or serum

Materials provided :

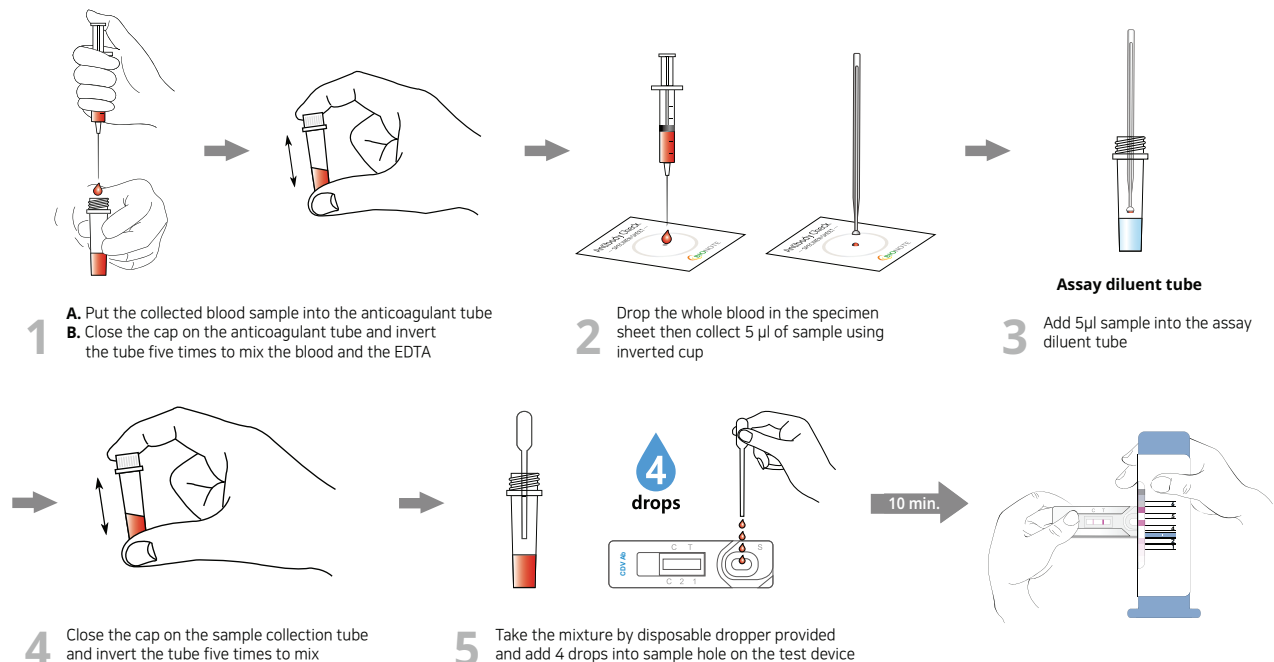
- Anigen Rapid CPV Ab/CDV Ab test device
- Assay diluent tube
- Disposable inverted cup (5 µl)
- Specimen sheet
- Anticoagulant tube
- Disposable dropper
- Color scale (1~6) measurement



Special Features :

- World's first CPV Ab and CDV Ab titer rapid immunochromatographic test kit
- Semi - quantitative detection of IgG antibodies
- One step testing procedure : Easy to use, Saving time and labor
- Quick & Accurate
- High sensitivity and specificity compared with HI (CPV) & VN (CDV) test
 - Sensitivity : CPV 95.4% / CDV 96.9%
 - Specificity : CPV 97.0% / CDV 100%

Test Procedure

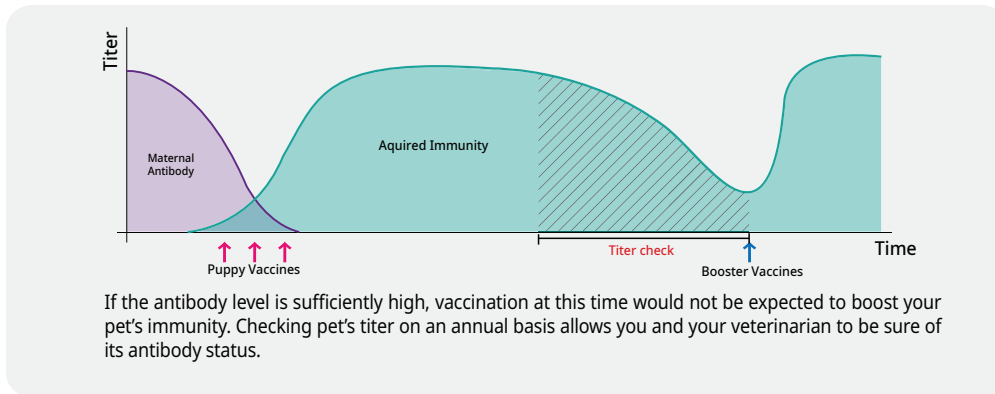


Ordering Information

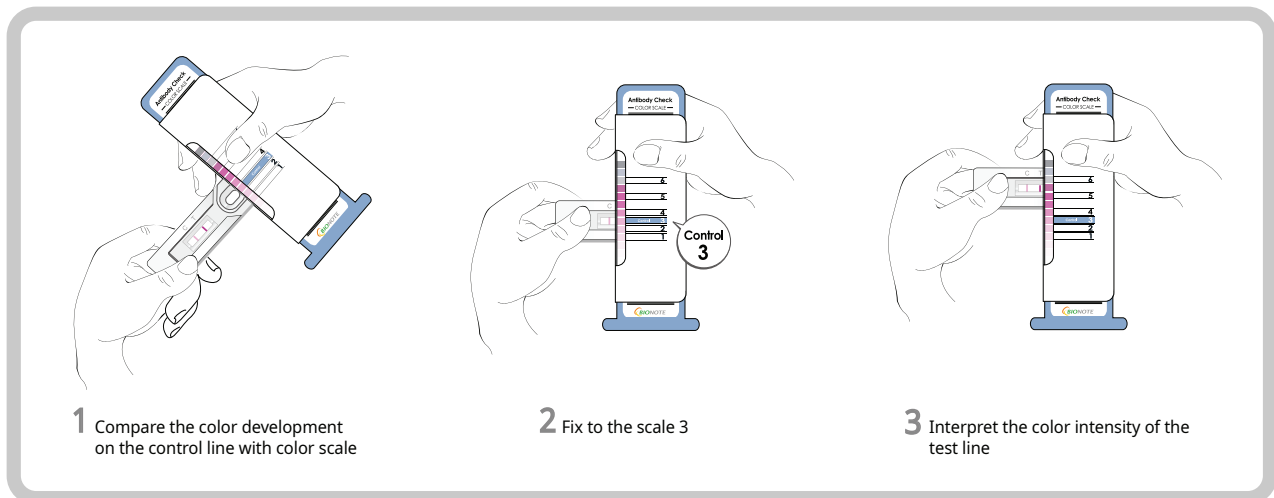
Cat. No.	Description	Type	pack size
RB2153DD	CPV Ab 3.0	Device	10 Tests/Kit
RB2154DD	CDV Ab 3.0	Device	10 Tests/Kit

Application

- For serological diagnosis of CPV and CDV infection
- For the prediction of prognosis in patients with CPV or CDV
- For assessment of immune status of puppies after vaccination
- For determination of the proper time of vaccination by measuring a maternal antibody titer
- For determination of the proper time for revaccination



Reading the result of titer check system



Line color Intensity	Titer	Color scale level and immune status
<div style="display: flex; justify-content: space-around;"> C T </div>	CPV - HI below 1:40 CDV - VN below 1:4	The color development of T line is weaker than that of C line (Color scale 1~2) **Antibody titer is low against CDV or CPV This is indicative of poor immune status (additional vaccination required)
<div style="display: flex; justify-content: space-around;"> C T </div>	CPV - HI 1:80 CDV - VN 1:8	The T line has equal color development with C lines (Color scale 3) **Antibody titer is medium against CDV or CPV This is indicative of a good immune status
<div style="display: flex; justify-content: space-around;"> C T </div>	CPV - HI Above 1:160 CDV - VN Above 1:16	The color development of T line is higher or same with C line (Color scale 4~6) **Antibody titer is high against CDV or CPV This is indicative of an excellent immune status

Anigen Rapid CCV Ag

General Information

Purpose : Detection of Canine Coronavirus (CCV) antigen

Principle : Immunochromatographic assay

Specimen : Canine fecal swab

Materials provided :

- Anigen Rapid CCV Ag test device
- Assay diluents tube
- Disposable swab
- Disposable dropper

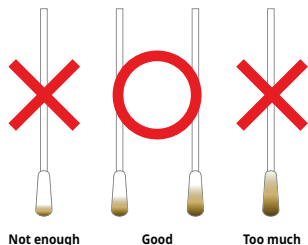
Special Features :

- World's first CCV Ag rapid test
- One-step testing procedure : Quick & Accurate
- High sensitivity and specificity compared with Nested PCR
 - Sensitivity : 93.1%
 - Specificity : 97.5%

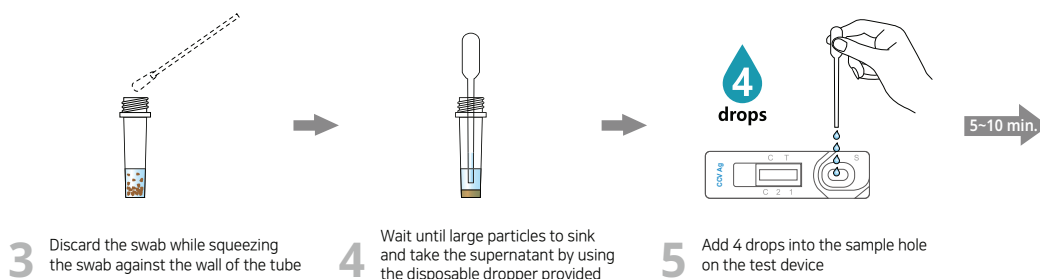


Test Procedure

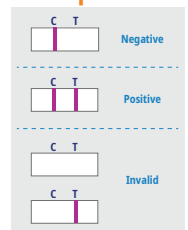
[Proper sample amount collected by a swab]



- 1 Collect a sample from the canine feces by using the swab
- 2 Insert the swab into the sample collection tube and stir the swab at least 10 times



Interpretation



Ordering Information

Cat. No.	Description	Type	Pack size
RG1104DD	CCV Ag	Device	10 Tests/Kit

Anigen Rapid CPV Ag

General Information

Purpose : Detection of Canine Parvovirus (CPV) antigen

Principle : Immunochromatographic assay

Specimen : Canine fecal swab

Materials provided :

- Anigen Rapid CPV Ag test device
- Assay diluents tube
- Disposable swab
- Disposable dropper

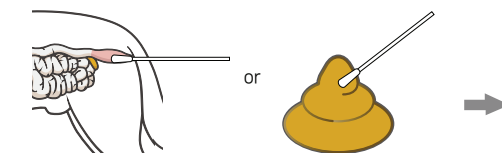
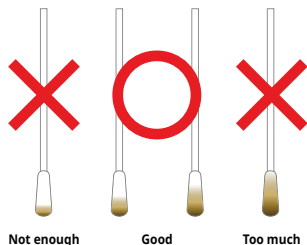
Special Features :

- Detection of pathogenic CPV subtypes (CPV 2, 2a, 2b & 2c)
- No interference of test results by the vaccination
- One-step testing procedure : Quick & Accurate
- High sensitivity and specificity compared with HA test
 - Sensitivity : 100%
 - Specificity : 100%

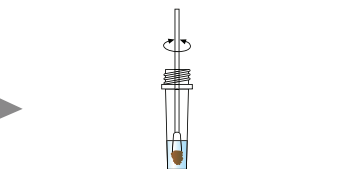


Test Procedure

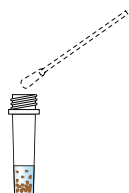
[Proper sample amount collected by a swab]



1 Collect a sample from the canine feces by using the swab



2 Insert the swab into the sample collection tube and stir the swab at least 10 times



3 Discard the swab while squeezing the swab against the wall of the tube



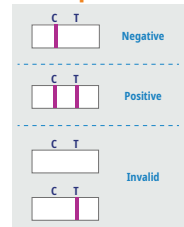
4 Wait until large particles sink and take the supernatant by using the disposable dropper provided



5 Add 4 drops into the sample hole on the test device

5-10 min.

Interpretation



Ordering Information

Cat. No.	Description	Type	Pack size
RG1101DD	CPV Ag	Device	10 Tests/Kit

Giardia Ag

General Information

Purpose : Detection of vegetative stages and cysts of Giardia

Principle : Immunochromatographic assay

Specimen : Canine, Feline fecal swab

Materials provided :

- Anigen Rapid Giardia Ag test device
- Assay diluents tube
- Disposable swab
- Disposable dropper

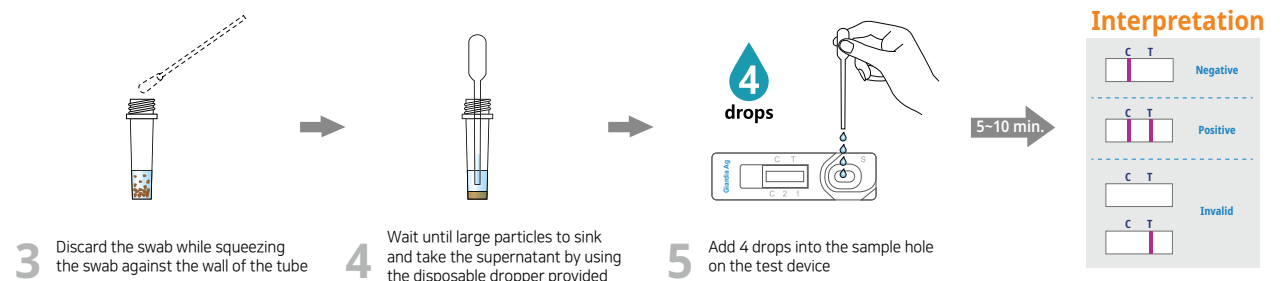
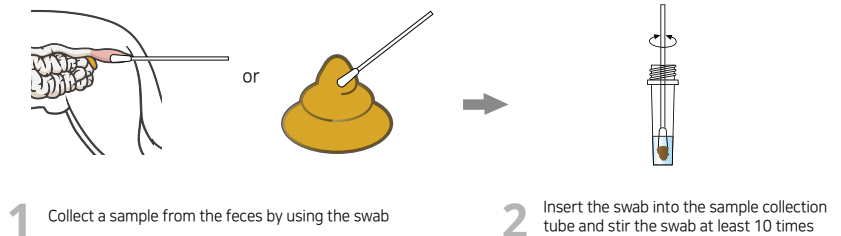
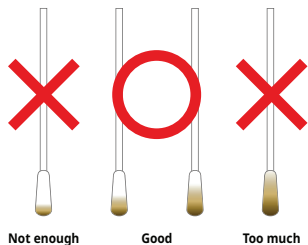
Special Features :

- Able to detect the pathogen in both dogs and cats
- One-step testing procedure : Quick & Accurate
- High sensitivity and specificity compared with Real-time PCR
 - Sensitivity : 100%
 - Specificity : 100%
- Detection limit: 125/100 µl



Test Procedure

[Proper sample amount collected by a swab]



Ordering Information

Cat. No.	Description	Type	Pack size
RG1804DD	Giardia Ag	Device	10 Tests/Kit

Anigen Rapid

CPV/CCV Ag

General Information

Purpose : Detection of Canine Parvovirus (CPV) and Canine Coronavirus (CCV) antigen

Principle : Immunochromatographic assay

Specimen : Canine fecal swab

Materials provided :

- Anigen Rapid CPV/CCV Ag test device
- Assay diluents tube
- Disposable swab
- Disposable dropper

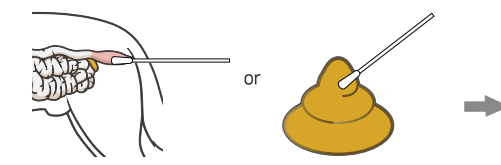
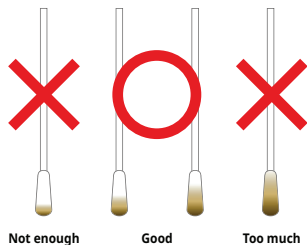
Special Features :

- Simultaneous detection of CPV and CCV with one specimen preparation
- One-step testing procedure : Quick & Accurate
- High sensitivity and specificity

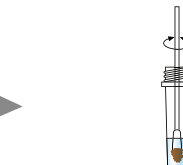


Test Procedure

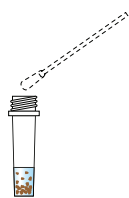
[Proper sample amount collected by a swab]



1 Collect a sample from the canine feces by using the swab



2 Insert the swab into the sample collection tube and stir the swab at least 10 times



3 Discard the swab while squeezing the swab against the wall of the tube

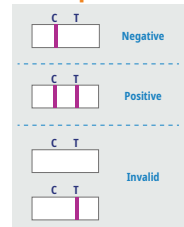


4 Wait until large particles to sink and take the supernatant by using the disposable dropper provided



5 Add 4 drops into the sample hole on the test device

Interpretation



Ordering Information

Cat. No.	Description	Type	Pack size
RC1105DD	CPV/CCV Ag	Dual Device	10 Tests/Kit

CPV/CCV/Giardia Ag

General Information

Purpose : Detection of Canine Parvovirus (CPV), Canine Coronavirus (CCV) and Giardia antigen

Principle : Immunochromatographic assay

Specimen : Canine fecal swab

Materials provided :

- Anigen Rapid CPV/CCV/Giardia Ag test device
- Assay diluents tube for CPV/CCV Ag (P)
- Assay diluents tube for Giardia Ag (G)
- Disposable swab
- Disposable dropper

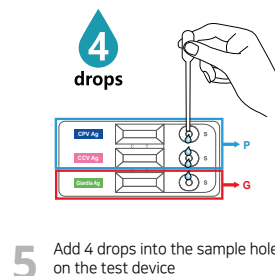
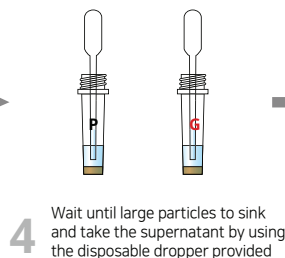
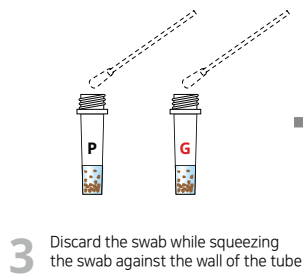
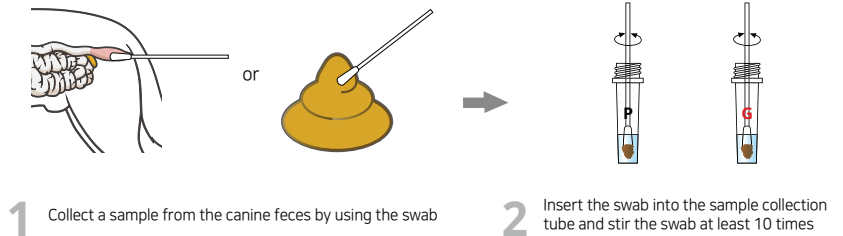
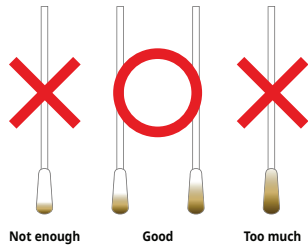
Special Features :

- Simultaneous detection of CPV, CCV and Giardia
- One-step testing procedure : Quick & Accurate
- High sensitivity and specificity

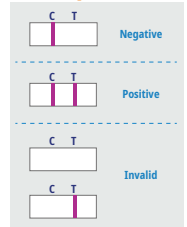


Test Procedure

[Proper sample amount collected by a swab]



Interpretation



Ordering Information

Cat. No.	Description	Type	Pack size
RC1112DC	CPV/CCV/Giardia Ag	Quattro Device	5 Tests/Kit

CPV/CCV/Giardia Ag 2.0

General Information

Purpose : Detection of Canine Parvovirus (CPV), Canine Coronavirus (CCV) and Giardia antigen

Principle : Immunochromatographic assay

Specimen : Canine fecal swab

Materials provided :

- Anigen Rapid CPV/CCV/Giardia Ag 2.0 test device
- Assay diluents tube for CPV/CCV Ag (P)
- Assay diluents tube for Giardia Ag (G)
- Disposable swab
- Disposable dropper

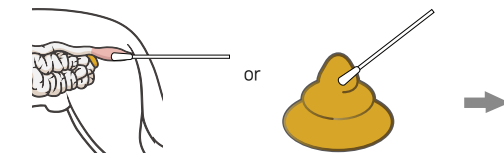
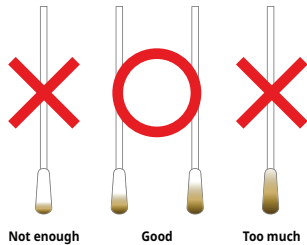
Special Features :

- Simultaneous detection of CPV, CCV and Giardia
- One-step testing procedure : Quick & Accurate
- High sensitivity and specificity

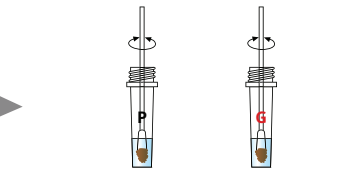


Test Procedure

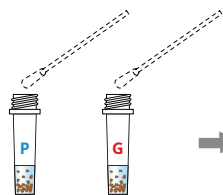
[Proper sample amount collected by a swab]



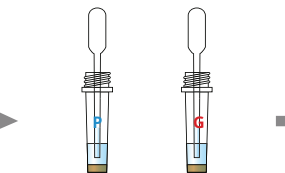
1 Collect a sample from the canine feces by using the swab



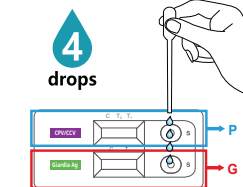
2 Insert the swab into the sample collection tube and stir the swab at least 10 times



3 Discard the swab while squeezing the swab against the wall of the tube



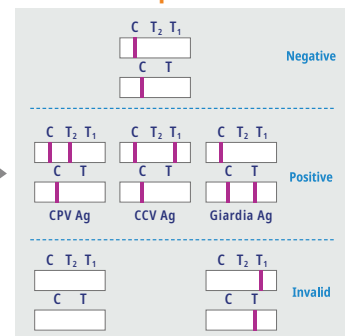
4 Wait until large particles to sink and take the supernatant by using the disposable dropper provided



5 Add 4 drops into the sample hole on the test device

5~10 min.

Interpretation



Ordering Information

Cat. No.	Description	Type	Pack size
RC1115DC	CPV/CCV/Giardia Ag 2.0	Quattro Device	5 Tests/Kit

CDV Ag

General Information

Purpose : Detection of Canine Distempervirus (CDV) antigen

Principle : Immunochromatographic assay

Specimen : Canine conjunctival swab (Recommended), urine, serum or plasma

Materials provided :

- Anigen Rapid CDV Ag test device
- Assay diluents tube
- Disposable swab
- Disposable dropper

Special Features :

- No interference of test results by the vaccination
- One-step testing procedure : Quick & Accurate
- High sensitivity and compared with Nested PCR, PLA
 - Sensitivity : 98.8%
 - Specificity : 97.7%



Test Procedure

- 1 Collect conjunctiva sample from the 3rd eye lid (Red colored area)
- 2 Insert the swab into the sample collection tube and stir the swab at least 10 times
- 3 Discard the swab while squeezing the swab against the wall of the tube
- 4 Take the supernatant by using the disposable dropper provided
- 5 Add 4 drops into the sample hole on the test device

5-10 min.

Interpretation

C	T	Negative
C	T	Positive
C	T	Invalid

Ordering Information

Cat.No.	Description	Type	Pack size
RG1103DD	CDV Ag	Device	10 Tests/Kit

Anigen Rapid CIV Ag

General Information

Purpose : Detection of Canine Influenzavirus (CIV) antigen

Principle : Immunochromatographic assay

Specimen : Canine nasal swab

Materials provided :

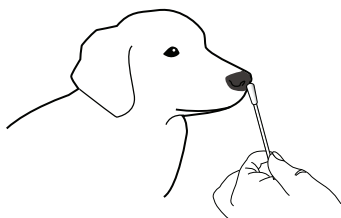
- Anigen Rapid CIV Ag test device
- Assay diluents tube
- Disposable swab
- Disposable dropper

Special Features :

- Detection of Canine influenza virus H3 strain antigen
- One-step testing procedure : Quick & Accurate
- High sensitivity and specificity compared with RT-PCR and HA test
 - Sensitivity : 94.7%
 - Specificity : 100%



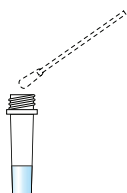
Test Procedure



1 Swab the nasal cavity epithelial cell



2 Insert the swab into the sample collection tube and stir the swab at least 10 times



3 Discard the swab while squeezing the swab against the wall of the tube



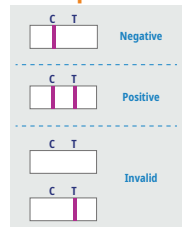
4 Take the supernatant by using the disposable dropper provided



5 Add 4 drops into the sample hole on the test device

5~10 min.

Interpretation



Ordering Information

Cat. No.	Description	Type	Pack size
RG1107DD	CIV Ag	Device	10 Tests/Kit

CDV/CAV Ag

General Information

Purpose : Detection of Canine Distempervirus (CDV) and Canine Adenovirus (CAV) antigen

Principle : Immunochromatographic assay

Specimen : CDV Ag - Canine conjunctival swab, CAV Ag - Canine nasal swab

Materials provided :

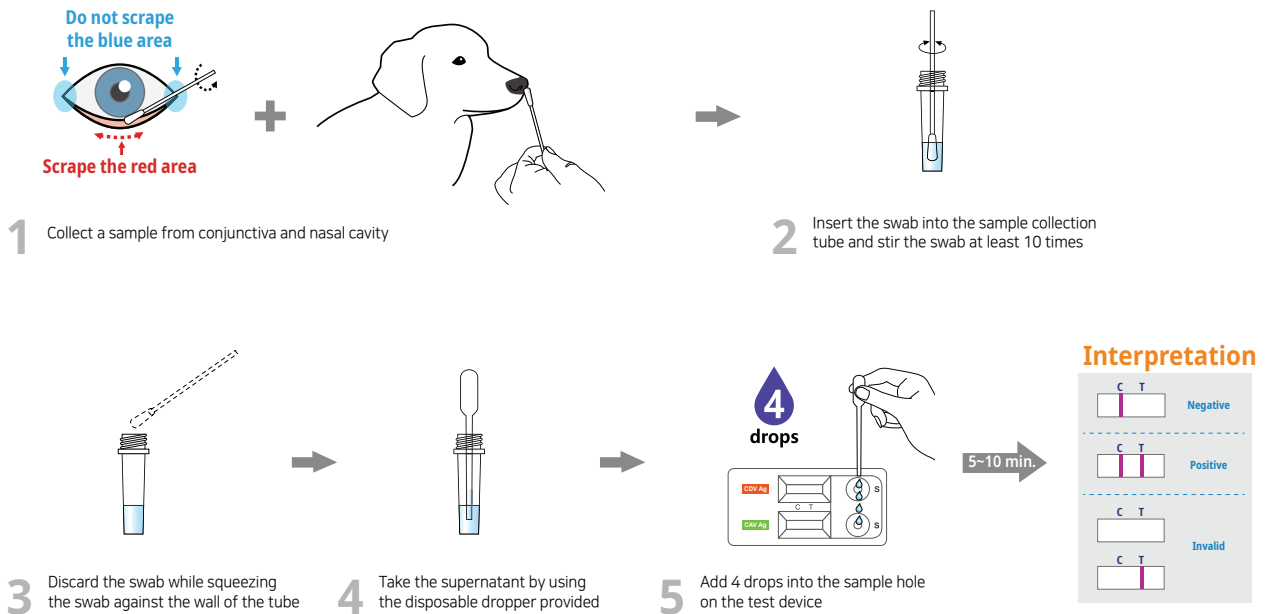
- Anigen Rapid CDV/CAV Ag test device
- Assay diluents tube
- Disposable swab
- Disposable dropper

Special Features :

- Simultaneous detection of CDV and CAV with one specimen preparation
- One-step testing procedure : Quick & Accurate
- High sensitivity and specificity



Test Procedure



Ordering Information

Cat. No.	Description	Type	Pack size
RC1108DD	CDV/CAV Ag	Dual Device	10 Tests/Kit

CIRD-3 Ag

General Information

Purpose : Detection of Canine Distempervirus (CDV), Canine Adenovirus (CAV), and Canine Influenzavirus (CIV) antigen

Principle : Immunochromatographic assay

Specimen : CDV Ag - Canine conjunctival swab, CAV & CIV Ag - Canine nasal swab

Materials provided :

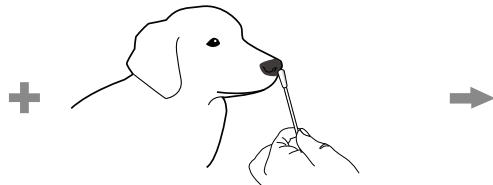
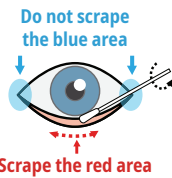
- Anigen Rapid CIRD-3 Ag test device
- Assay diluents tube
- Disposable swab
- Disposable dropper

Special Features :

- Simultaneous detection of CDV, CAV and CIV with one specimen preparation
- One-step testing procedure : Quick & Accurate
- High sensitivity and specificity

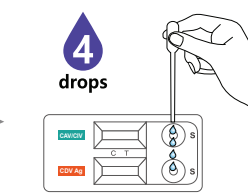
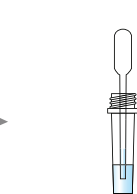
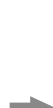
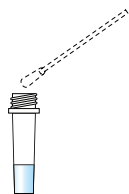


Test Procedure



1 Collect a sample from conjunctiva and nasal cavity

2 Insert the swab into the sample collection tube and stir the swab at least 10 times



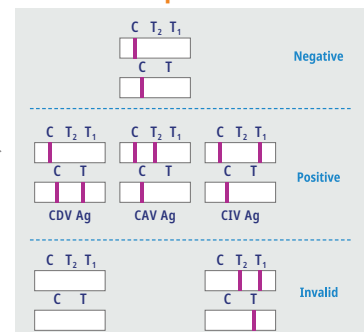
5-10 min.

3 Discard the swab while squeezing the swab against the wall of the tube

4 Take the supernatant by using the disposable dropper provided

5 Add 4 drops into the sample hole on the test device

Interpretation



Ordering Information

Cat. No.	Description	Type	Pack size
RC1109DD	CIRD-3 Ag	Dual Device	10 Tests/Kit

C.Brucella Ab

General Information

Purpose : Detection of canine antibody against *Brucella canis*

Principle : Immunochromatographic assay

Specimen : Canine whole blood, plasma or serum

Materials provided :

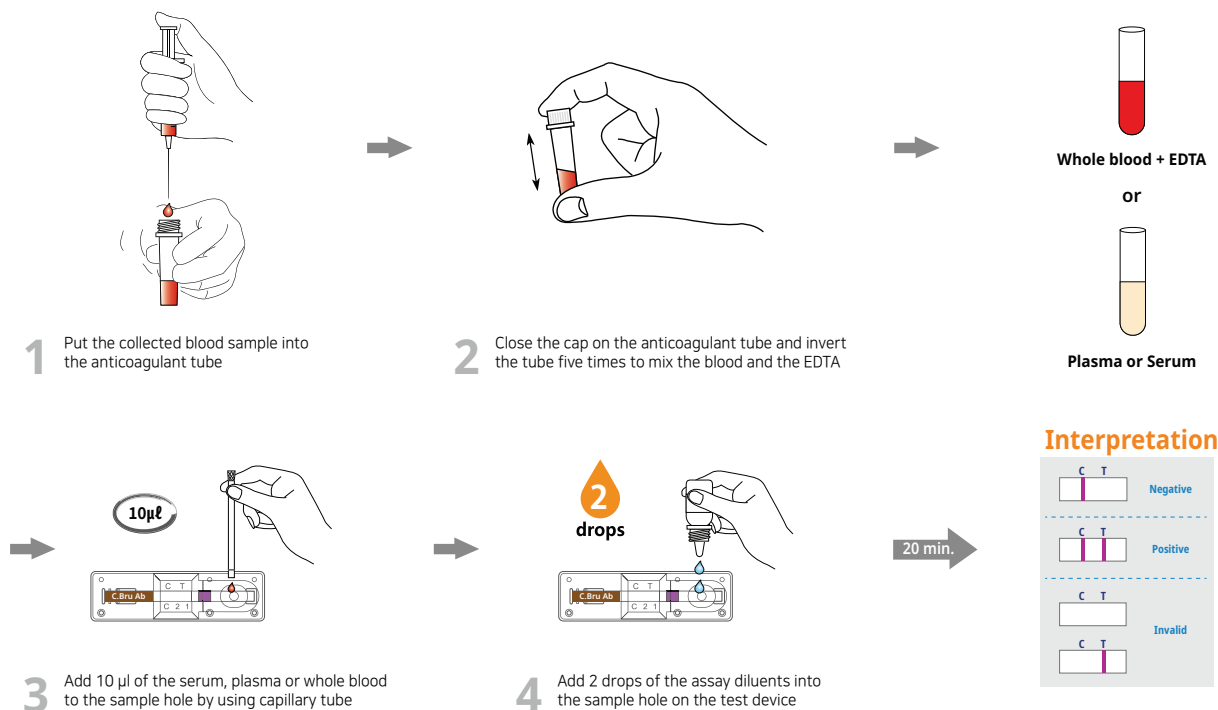
- Anigen Rapid C.Brucella Ab test device
- Assay diluents bottle
- Anticoagulant tube
- Disposable capillary tube

Special Features :

- One-step testing procedure : Quick & Accurate
- High sensitivity and specificity compared with Bacterial isolation



Test Procedure



Ordering Information

Cat. No.	Description	Type	Pack size
RB2103DD	C.Brucella Ab	Device	10 Tests/Kit

Canine Babesia Ab

General Information

Purpose : Detection of canine antibody against *Babesia gibsoni*

Principle : Immunochromatographic assay

Specimen : Canine whole blood, plasma or serum

Materials provided :

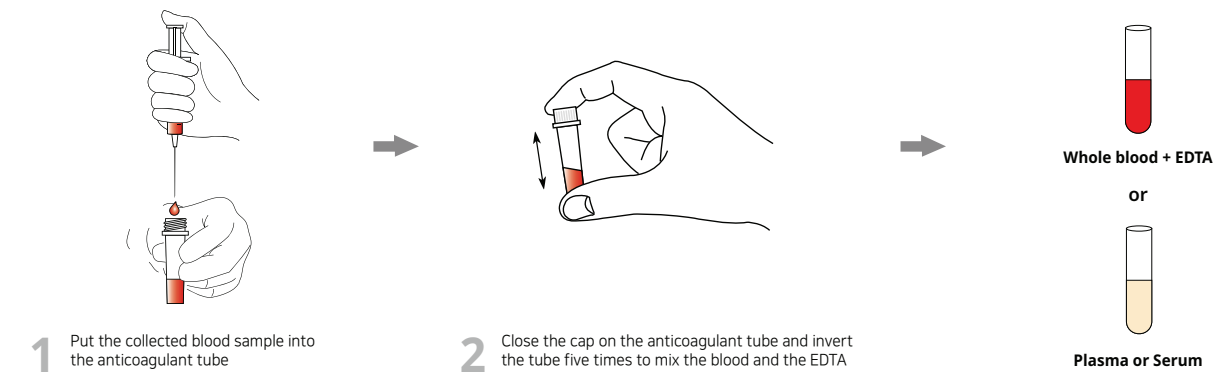
- Anigen Rapid Canine Babesia Ab test device
- Assay diluents bottle
- Anticoagulant tube
- Disposable capillary tube

Special Features :

- One-step testing procedure : Quick & Accurate
- High sensitivity and specificity compared with IFA
 - Sensitivity : 99.17%
 - Specificity : 95.14%



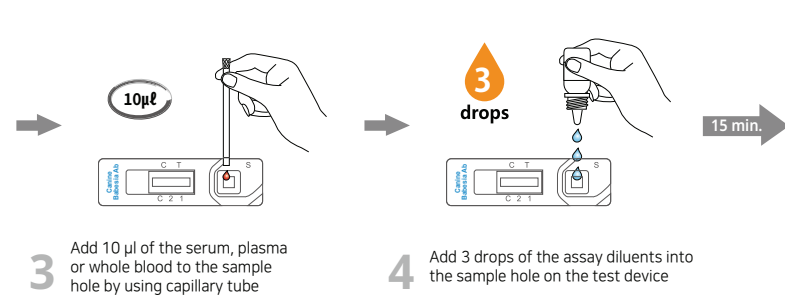
Test Procedure



1 Put the collected blood sample into the anticoagulant tube

2 Close the cap on the anticoagulant tube and invert the tube five times to mix the blood and the EDTA

Whole blood + EDTA
or
Plasma or Serum



3 Add 10 µl of the serum, plasma or whole blood to the sample hole by using capillary tube

4 Add 3 drops of the assay diluents into the sample hole on the test device

Interpretation

Clinical Signs	PCR	BIONOTE Canine Babesia Ab	Interpretation	Diagnosis
+	+	+	4~16 weeks after infection	Infection
+	+	-	2~4 weeks after infection	Infection
+	-	+	At least 17 weeks after infection	Recheck necessary
+	-	-	Only 1~3 weeks passed after infection	Recheck necessary

Ordering Information

Cat. No.	Description	Type	Pack size
RB2126DD	Canine Babesia Ab	Device	10 Tests/Kit

CHW Ag 2.0

General Information

Purpose : Detection of *Dirofilaria immitis* antigen

Principle : Immunochromatographic assay

Specimen : Canine whole blood, plasma or serum

Materials provided :

- Anigen Rapid CHW Ag 2.0 test device
- Anticoagulant tube
- Disposable dropper

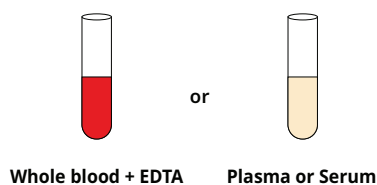
Special Features :

- High sensitivity even in dogs with low worm burdens (1~5 worms)
- One-step testing procedure : Quick & Accurate
- High sensitivity and specificity compared with necropsy
 - Sensitivity : 99.5%
 - Specificity : 94.0%

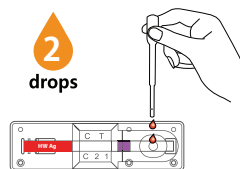


The earliest phase of heartworm antigen and microfilariae that can be detected is about 5 and 6 months post infection, respectively. Whether screening a population of asymptomatic dogs or seeking verification of a suspected heartworm infection, antigen testing is the most sensitive diagnostic method. Microfilaria testing is complementary and may be done in tandem with antigen testing to determine whether this life cycle stage is also present in dogs that are antigenemic.

Test Procedure



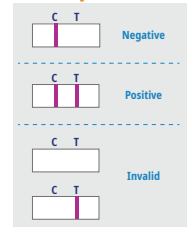
1 Prepare a sample



2 Add 2 drops of the blood, plasma or serum into the sample hole on the test device



Interpretation



Ordering Information

Cat. No.	Description	Type	Pack size
RG1102DD	CHW Ag 2.0	Device	10 Tests/Kit

E.canis Ab

General Information

Purpose : Detection of canine antibody against *Ehrlichia canis*

Principle : Immunochromatographic assay

Specimen : Canine whole blood, plasma or serum

Materials provided :

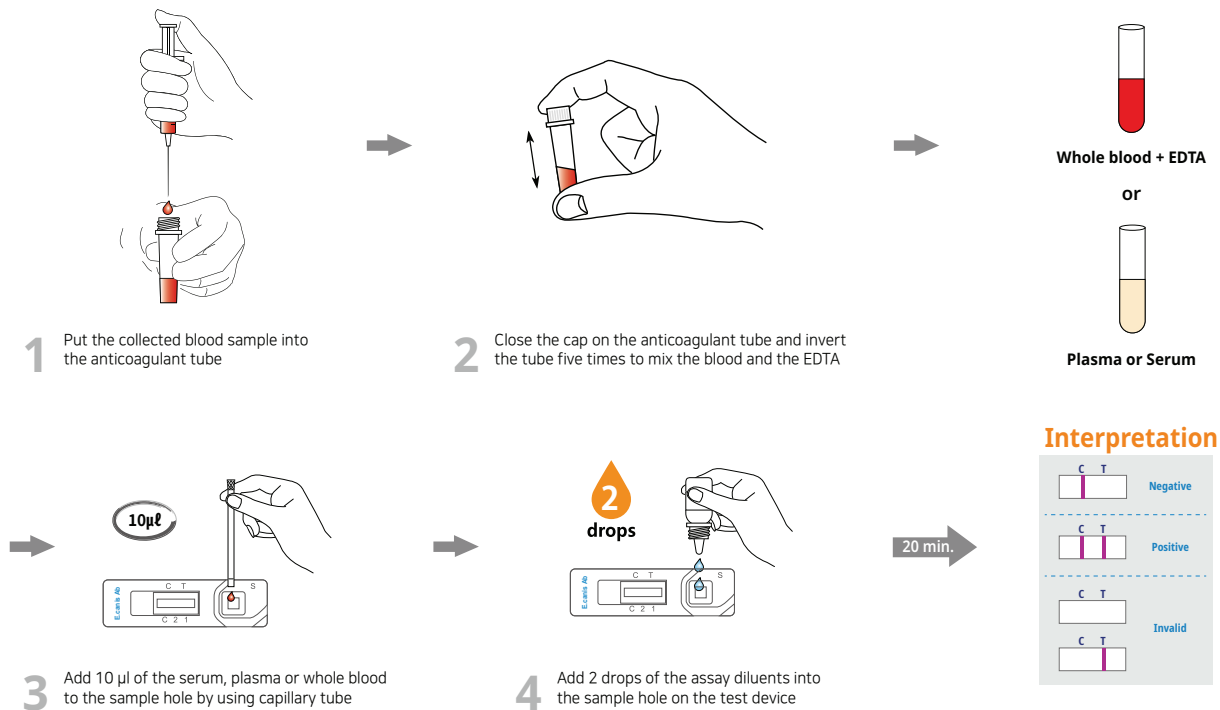
- Anigen Rapid E.canis Ab test device
- Assay diluents bottle
- Anticoagulant tube
- Disposable capillary tube

Special Features :

- One-step testing procedure : Quick & Accurate
- High sensitivity and specificity compared with IFA
 - Sensitivity : 98.2%
 - Specificity : 100%



Test Procedure



Ordering Information

Cat. No.	Description	Type	Pack size
RB2105DD	E.canis Ab	Device	10 Tests/Kit

Leishmania Ab

General Information

Purpose : Detection of canine antibody against *Leishmania infantum*

Principle : Immunochromatographic assay

Specimen : Canine whole blood, plasma or serum

Materials provided :

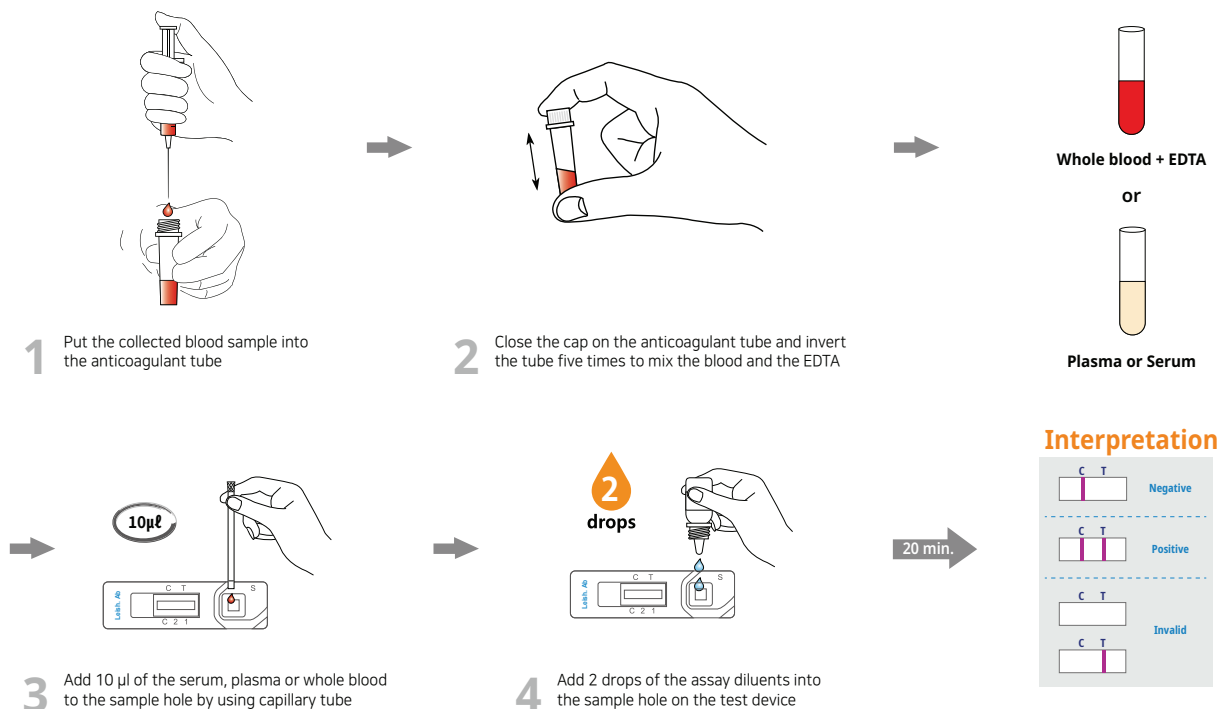
- Anigen Rapid Leishmania Ab test device
- Assay diluents bottle
- Anticoagulant tube
- Disposable capillary tube

Special Features :

- One-step testing procedure : Quick & Accurate
- High sensitivity and specificity compared with IFA
 - Sensitivity : 97.2%
 - Specificity : 99.8%



Test Procedure



Ordering Information

Cat. No.	Description	Type	Pack size
RB2104DD	Leishmania Ab	Device	10 Tests/Kit

Rabies Ag

General Information

Purpose : Detection of Rabies virus antigen

Principle : Immunochromatographic assay

Specimen : 10% brain homogenates

Materials provided :

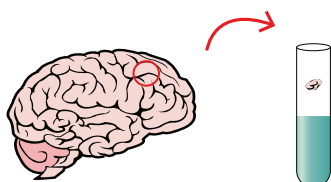
- Anigen Rapid Rabies Ag test device
- Assay diluents tube
- Disposable swab
- Disposable dropper

Special Features :

- One-step testing procedure : Quick & Accurate
- High sensitivity and specificity compared with dFAT
 - Sensitivity : 96.9%
 - Specificity : 100%



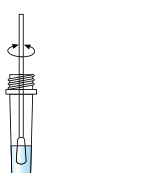
Test Procedure



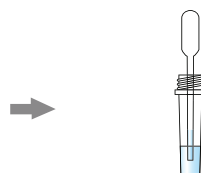
1 Prepare 10% brain homogenates with PBS



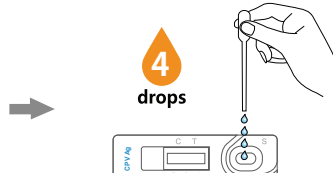
2 Collect a sample from brain homogenates by using the swab



3 Insert the swab into the sample collection tube and swirl the swab at least 10 times



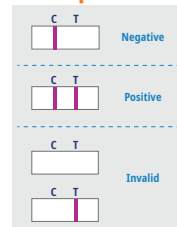
4 Take the supernatant by using the disposable dropper provided



5 Add 4 drops into the sample hole on the test device

5-10 min.

Interpretation



Ordering Information

Cat. No.	Description	Type	Pack size
RG1801DD	Rabies Ag	Device	10 Tests/Kit

Total IgE

General Information

Purpose : Detection of canine total IgE antibody

Principle : Immunochromatographic assay

Specimen : Canine serum

Materials provided :

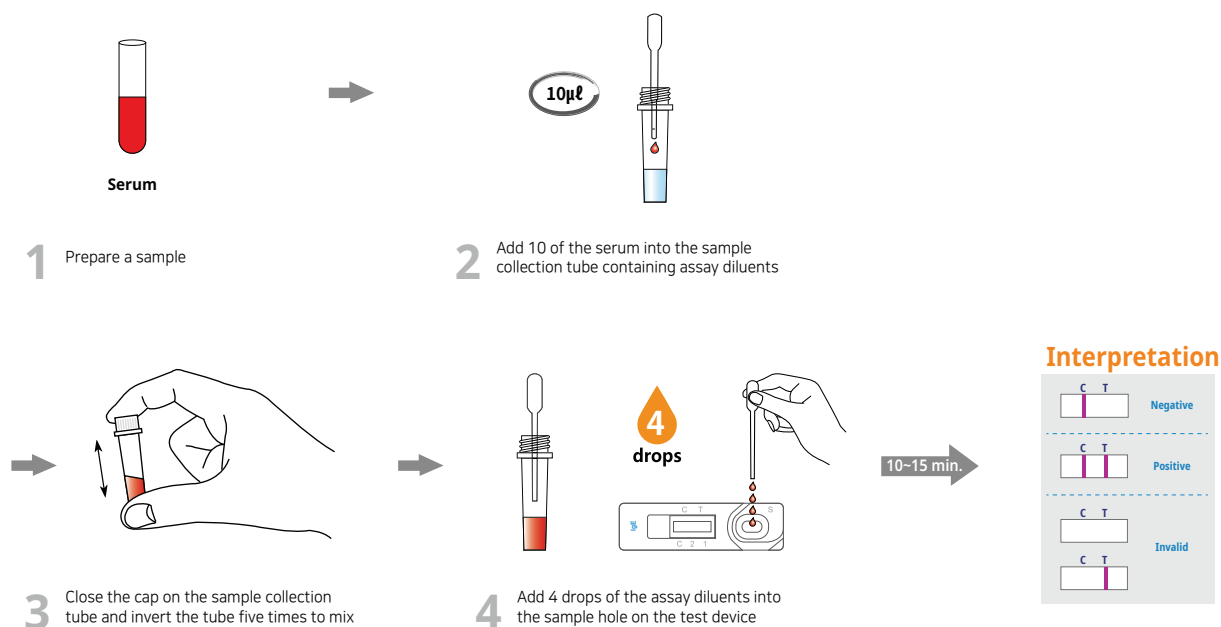
- Anigen Rapid Total IgE test device
- Assay diluents bottle
- Disposable capillary tube
- Disposable dropper

Special Features :

- Canine allergy indicator test
- One-step testing procedure : Quick & Accurate
- High sensitivity and specificity compared with ELISA
 - Sensitivity : 98.1%
 - Specificity : 94.7%



Test Procedure



Ordering Information

Cat. No.	Description	Type	Pack size
RB2110DD	Total IgE	Device	10 Tests/Kit

E.canis/Anaplasma Ab

General Information

Purpose : Detection of canine antibody against *E. canis* and *A. phagocytophilum/A. platys*

Principle : Immunochromatographic assay

Specimen : Canine whole blood, plasma or serum

Materials provided :

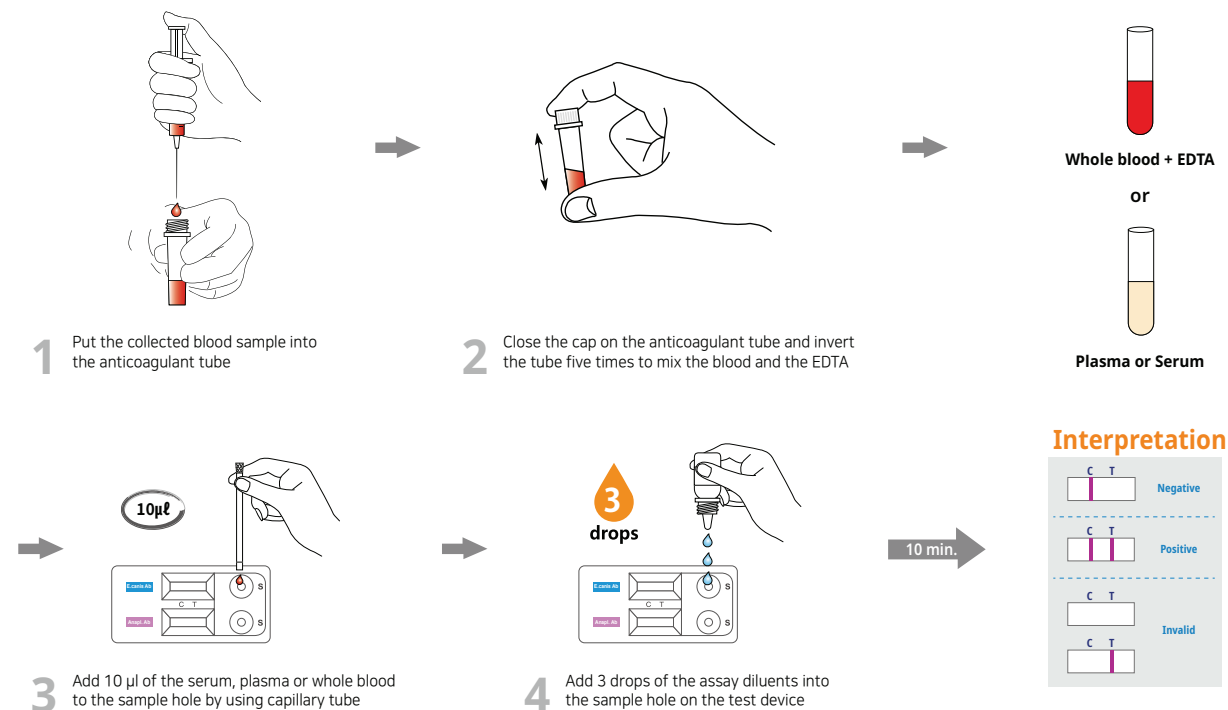
- Anigen Rapid E.canis/Anaplasma Ab test device
- Assay diluents bottle
- Anticoagulant tube
- Disposable capillary tube

Special Features :

- Simultaneous detection of E.canis Ab and Anaplasma Ab with one specimen preparation
- One-step testing procedure : Quick & Accurate
- High sensitivity and specificity compared with IFA
 - Sensitivity : Ana 96.1%
 - Specificity : Ana 99.3%



Test Procedure



Ordering Information

Cat. No.	Description	Type	Pack size
RC2123CD	E.canis/Anaplasma Ab	Dual Device	10 Tests/Kit

Caniv-4

General Information

Purpose : Detection of *D. immitis* antigen, canine antibody against *E. canis*, *Borrelia burgdorferi*, and *A. phagocytophilum/A. platys*

Principle : Immunochromatographic assay

Specimen : Canine whole blood, plasma or serum

Materials provided :

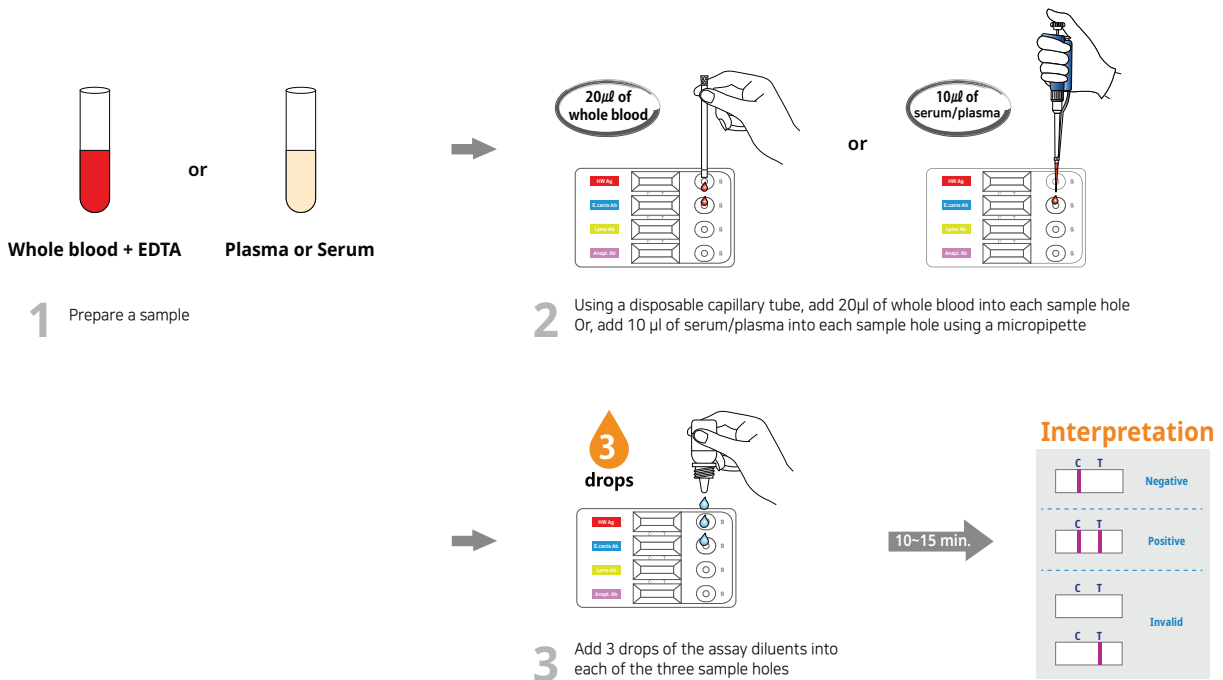
- Anigen Rapid Caniv-4 test device
- Assay diluents bottle
- Anticoagulant tube
- Disposable capillary tube

Special Features :

- Simultaneous detection of four kinds of Vector Borne diseases
- One-step testing procedure : Quick & Accurate
- High sensitivity and specificity



Test Procedure



Ordering Information

Cat. No.	Description	Type	Pack size
RC2120DD	Caniv-4	Quattro Device	10 Tests/Kit

CanIV-4 (Leish)

General Information

Purpose : Detection of *D. immitis* antigen, canine antibody against *E. canis*, *L. infantum*, and *A. phagocytophilum/A. platys*

Principle : Immunochromatographic assay

Specimen : Canine whole blood, plasma or serum

Materials provided :

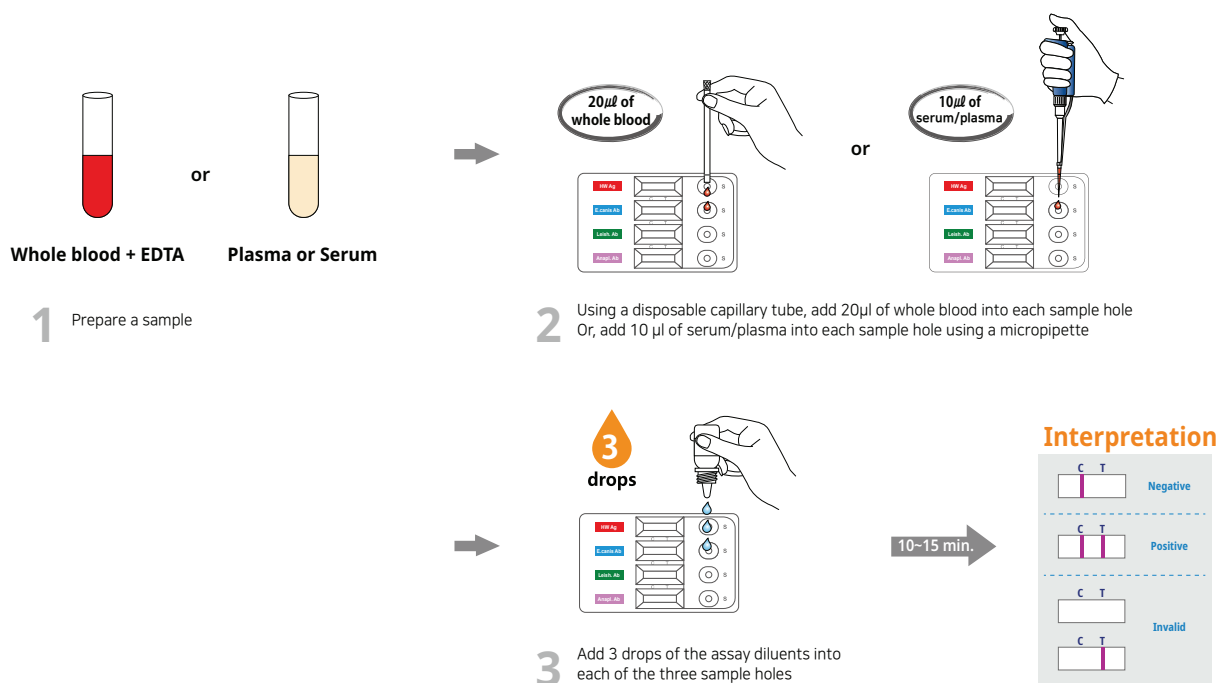
- Anigen Rapid CanIV-4 (Leish) test device
- Assay diluents bottle
- Anticoagulant tube
- Disposable capillary tube

Special Features :

- Simultaneous detection of four kinds of Vector Borne diseases
- One-step testing procedure : Quick & Accurate
- High sensitivity and specificity



Test Procedure



Ordering Information

Cat. No.	Description	Type	Pack size
RC2127DD	CanIV-4 (Leish)	Quattro Device	10 Tests/Kit

FCoV Ab

General Information

Purpose : Detection of feline antibody against Feline Coronavirus (FCoV)

Principle : Immunochromatographic assay

Specimen : Feline whole blood, plasma or serum

Materials provided :

- Anigen Rapid FCoV Ab test device
- Assay diluents bottle
- Anticoagulant tube
- Disposable capillary tube

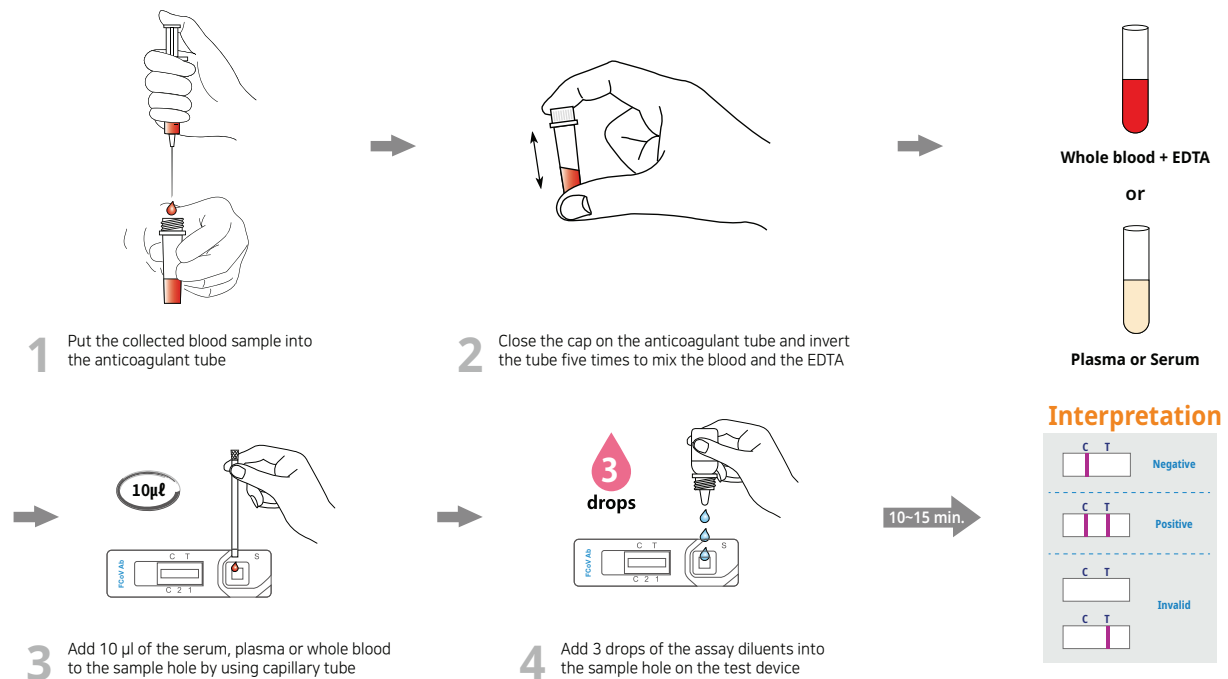
Special Features :

- One-step testing procedure : Quick & Accurate
- High sensitivity and specificity compared with IFA
 - Sensitivity : 96.0%
 - Specificity : 97.9%



- **How to do FIP diagnosis with Rapid FCoV Ab test**
 - Many healthy cats and cats with conditions other than FIP are FCoV Ab positive.
 - Some cats with effusive FIP appear to have low titers or are FCoV Ab negative.
 - FCoV Ab testing should only be performed to determine FIP in conjunction with a compatible history, clinical signs, and examination of effusions or blood for high globulins and a low A:G ratio.

Test Procedure



Ordering Information

Cat. No.	Description	Type	Pack size
RB2203DD	FCoV Ab	Device	10 Tests/Kit

FCoV Ag

General Information

Purpose : Detection of Feline Coronavirus (FCoV) antigen

Principle : Immunochromatographic assay

Specimen : Feline fecal swab

Materials provided :

- Anigen Rapid FCoV Ag test device
- Assay diluents tube
- Disposable swab
- Disposable dropper



Special Features :

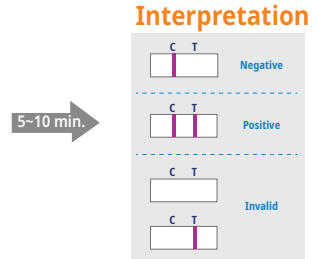
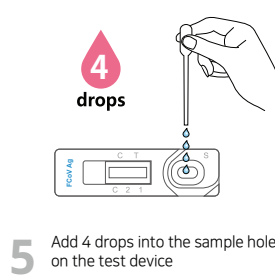
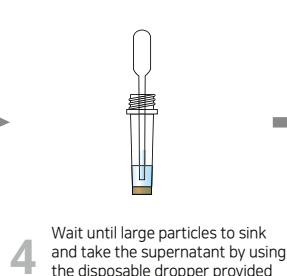
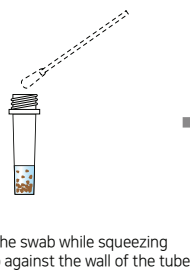
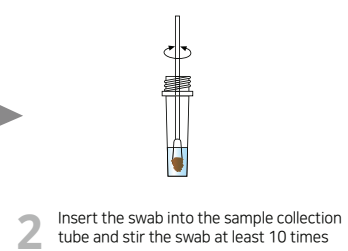
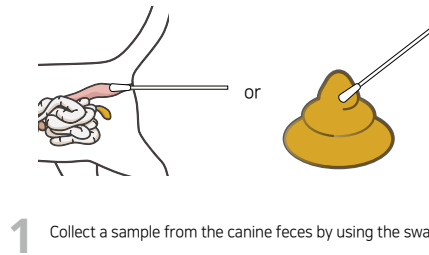
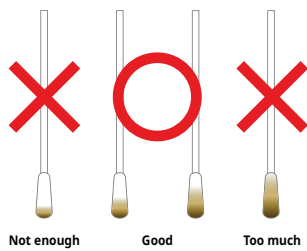
- One-step testing procedure : Quick & Accurate
- High sensitivity and specificity compared with Real-time RT-PCR
 - Sensitivity : 92.8%
 - Specificity : 98.1%

▪ **Feline infectious peritonitis ; FIP**

There are two basic forms of FIP-effusive (wet) and non effusive (dry) that have been characterized. Cats with effusive FIP usually only survive a few days-weeks at best. Cats with noneffusive FIP can survive for weeks or months, although after neurologic signs begin death usually occurs rapidly.

Test Procedure

[Proper sample amount collected by a swab]



Ordering Information

Cat. No.	Description	Type	Pack size
RG1205DD	FCoV Ag	Device	10 Tests/Kit

FPV Ag

General Information

Purpose : Detection of Feline Panleukopenia virus (FPV) antigen

Principle : Immunochromatographic assay

Specimen : Feline fecal swab

Materials provided :

- Anigen Rapid FPV Ag test device
- Assay diluents tube
- Disposable swab
- Disposable dropper

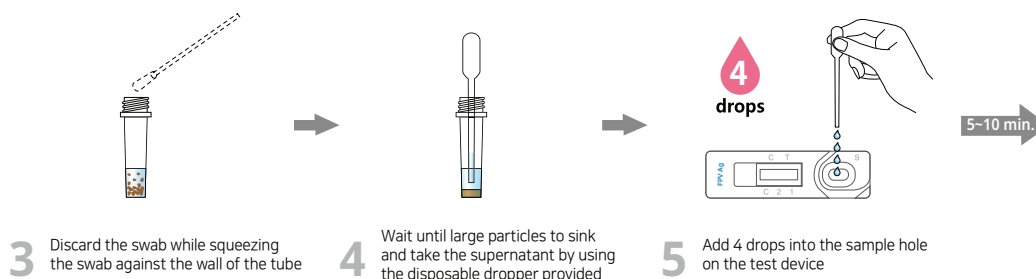
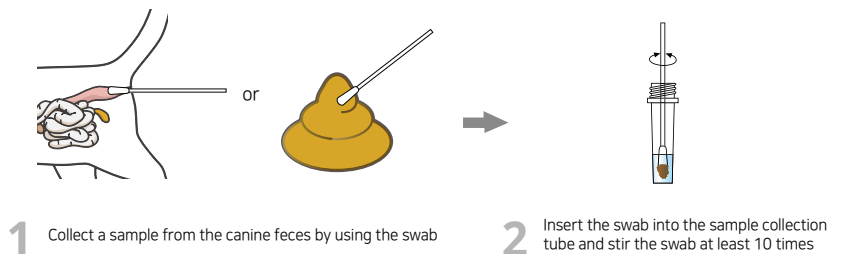
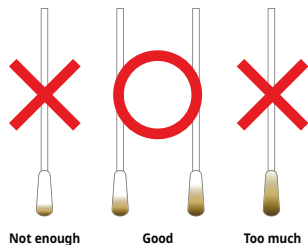


Special Features :

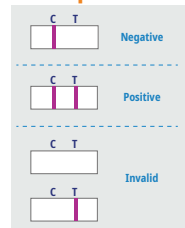
- One-step testing procedure : Quick & Accurate
- High sensitivity and specificity compared with conventional PCR
 - Sensitivity : 97%
 - Specificity : 98.5%

Test Procedure

[Proper sample amount collected by a swab]



Interpretation



Ordering Information

Cat. No.	Description	Type	Pack size
RG1203DD	FPV Ag	Device	10 Tests/Kit

FCoV Ag/Ab

General Information

Purpose : Detection of Feline Coronavirus (FCoV) antigen and feline antibody against FCoV

Principle : Immunochromatographic assay

Specimen : Ag - Feline fecal swab
Ab - Feline whole blood, plasma or serum

Materials provided :

- Anigen Rapid FCoV Ag/Ab test device
- Sample collection tube containing assay diluents
- Disposable swab
- Disposable dropper
- Assay diluent dropping bottle
- Anticoagulant tube
- Disposable capillary tube

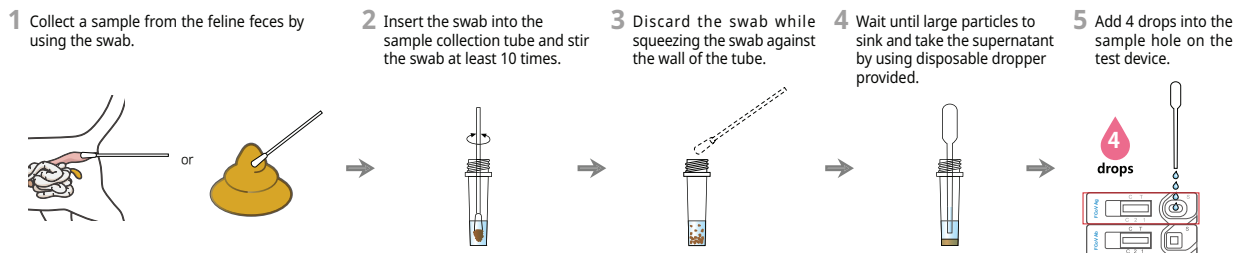


Special Features :

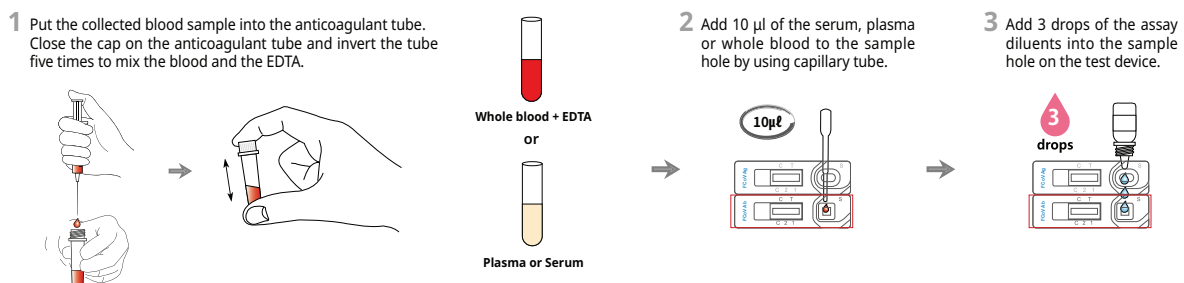
- One-step testing procedure : Quick & Accurate
- High sensitivity and specificity

Test Procedure

FCoV Ag Test



FCoV Ab Test



Ordering Information

Cat. No.	Description	Type	Pack size
RC1207CC	FCoV Ag/Ab	Dual Device	5 Tests/Kit

FeliD-3 Ag

General Information

Purpose : Detection of Feline Panleukopenia virus (FPV), Feline Coronavirus (FCoV), and Giardia antigen

Principle : Immunochromatographic assay

Specimen : Feline fecal swab

Materials provided :

- Anigen Rapid FeliD-3 Ag test device
- Assay diluents tube for FPV/FCoV Ag (P)
- Assay diluents tube for Giardia Ag (G)
- Disposable swab
- Disposable dropper

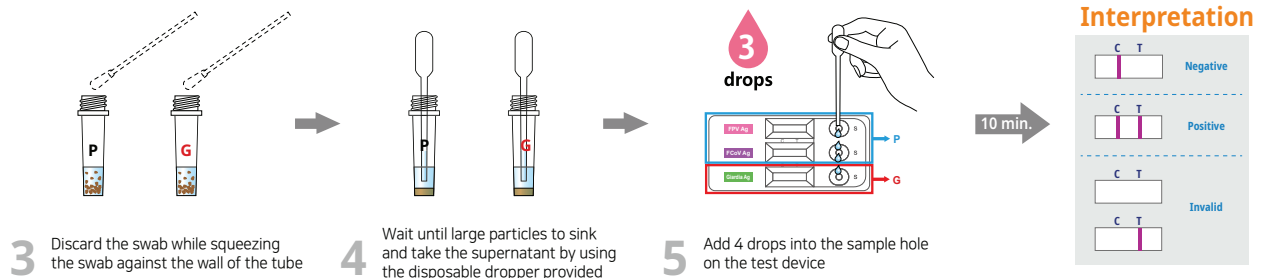
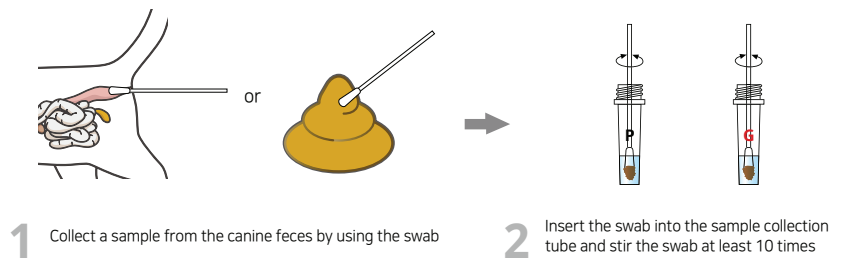
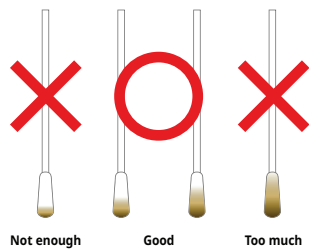
Special Features :

- Able to detect pathogens in cats
- One-step testing procedure : Quick & Accurate
- High sensitivity and specificity



Test Procedure

[Proper sample amount collected by a swab]



Ordering Information

Cat. No.	Description	Type	Pack size
RC1208DC	FeliD-3 Ag	Triple Device	5 Tests/Kit

Anigen Rapid FCV Ag

General Information

Purpose : Detection of Feline Calicivirus (FCV) antigen

Principle : Immunochromatographic assay

Specimen : Feline conjunctival swab

Materials provided :

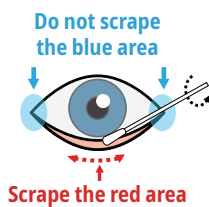
- Anigen Rapid FCV Ag test device
- Assay diluents tube
- Disposable swab
- Disposable dropper

Special Features :

- One-step testing procedure : Quick & Accurate
- High sensitivity and specificity compared with RT-PCR
 - Sensitivity : 64 times better than commercial Kit
 - Specificity : 100%

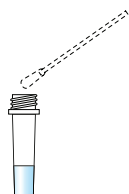


Test Procedure

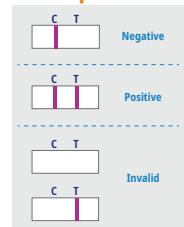


1 Collect conjunctiva sample from the 3rd eye lid (Red colored area)

2 Insert the swab into the sample collection tube and stir the swab at least 10 times



Interpretation



3 Discard the swab while squeezing the swab against the wall of the tube

4 Take the supernatant by using the disposable dropper provided

5 Add 4 drops into the sample hole on the test device

Ordering Information

Cat. No.	Description	Type	Pack size
RG1212DD	FCV Ag	Device	10 Tests/Kit

Anigen Rapid FHV Ag

General Information

Purpose : Detection of Feline Herpesvirus (FHV) antigen

Principle : Immunochromatographic assay

Specimen : Feline conjunctival swab

Materials provided :

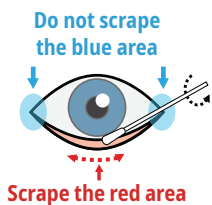
- Anigen Rapid FHV Ag test device
- Assay diluents tube
- Disposable swab
- Disposable dropper

Special Features :

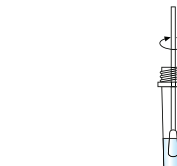
- One-step testing procedure : Quick & Accurate
- High sensitivity and specificity compared with RT-PCR
 - Sensitivity : 128 times better than commercial Kit
 - Specificity : 100%



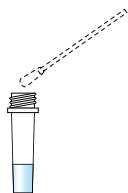
Test Procedure



1 Collect conjunctiva sample from the 3rd eye lid (Red colored area)



2 Insert the swab into the sample collection tube and stir the swab at least 10 times



3 Discard the swab while squeezing the swab against the wall of the tube



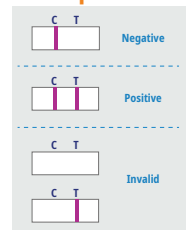
4 Take the supernatant by using the disposable dropper provided



5 Add 4 drops into the sample hole on the test device

10 min.

Interpretation



Ordering Information

Cat. No.	Description	Type	Pack size
RG1213DD	FHV Ag	Device	10 Tests/Kit

Toxoplasma Ab

General Information

Purpose : Detection feline antibody against *Toxoplasma gondii*

Principle : Immunochromatographic assay

Specimen : Feline whole blood, plasma or serum

Materials provided :

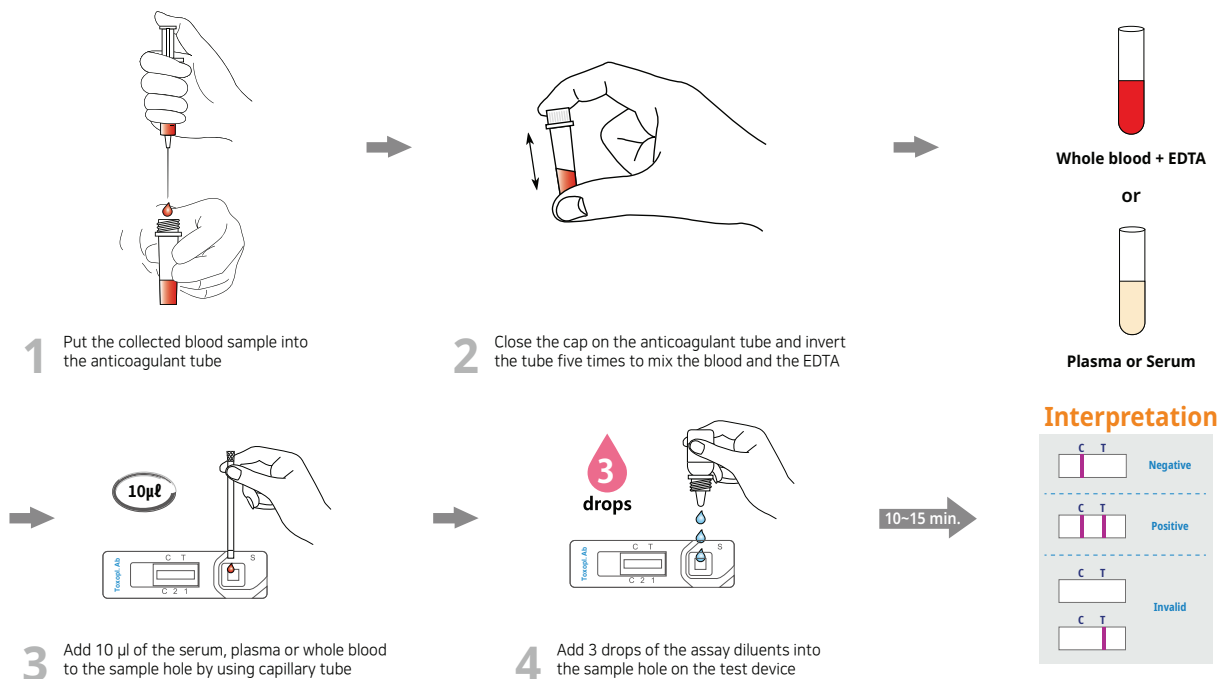
- Anigen Rapid Toxoplasma Ab test device
- Assay diluents bottle
- Anticoagulant tube
- Disposable capillary tube

Special Features :

- One-step testing procedure : Quick & Accurate
- High sensitivity and specificity compared with ELISA
 - Sensitivity : 100%
 - Specificity : 98.7%



Test Procedure



Ordering Information

Cat. No.	Description	Type	Pack size
RB2206CC	Toxoplasma Ab	Triple Device	5 Tests/Kit

Anigen Rapid

FHW Ag/Ab

General Information

Purpose : Detection of *Dirofilaria immitis* antigen and feline antibody against *D. immitis*

Principle : Immunochromatographic assay

Specimen : Feline whole blood, plasma or serum

Materials provided :

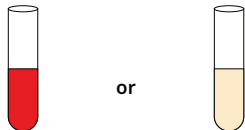
- Anigen Rapid FHW Ag/Ab test device
- Assay diluents bottle
- Anticoagulant tube
- Disposable capillary tube

Special Features :

- Simultaneous detection of FHW Ag and Ab with one specimen preparation
- One-step testing procedure : Quick & Accurate
- High sensitivity and specificity

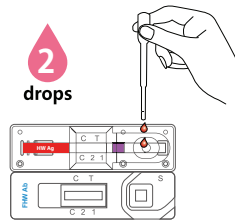


Test Procedure

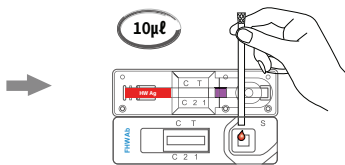


Whole blood + EDTA or Plasma or Serum

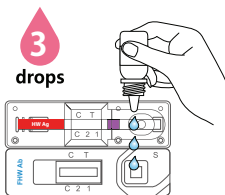
1 Prepare a sample



2 Use the disposable dropper and add 2 drops of the sample into the sample hole (FHW Ag)



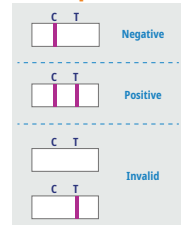
3 Add 10 µl of the serum, plasma or whole blood to the sample hole by using capillary tube



4 Add 3 drops of the assay diluents into the sample hole

10-15 min.

Interpretation



Ordering Information

Cat. No.	Description	Type	Pack size
RC2205CD	FHW Ag/Ab	Dual Device	10 Tests/Kit

FIV Ab/FeLV Ag

General Information

Purpose : Detection of feline antibody against Feline Immunodeficiency virus (FIV) and Feline Leukemia virus (FeLV) antigen

Principle : Immunochromatographic assay

Specimen : Feline whole blood, plasma or serum

Materials provided :

- Anigen Rapid FIV Ab / FeLV Ag test device
- Assay diluents bottle
- Anticoagulant tube
- Disposable capillary tube



Special Features :

- One-step testing procedure : Quick & Accurate
- High sensitivity and specificity compared with Real-time PCR
 - Sensitivity : FIV 100% / FeLV 91%
 - Specificity : FIV 100% / FeLV 98%

▪ **FIV Ab test**

A cat in the acute phase of infection may be antibody negative, and retesting within 6-8 weeks is warranted to establish a diagnosis in cats with a recent history that puts them at risk of exposure.

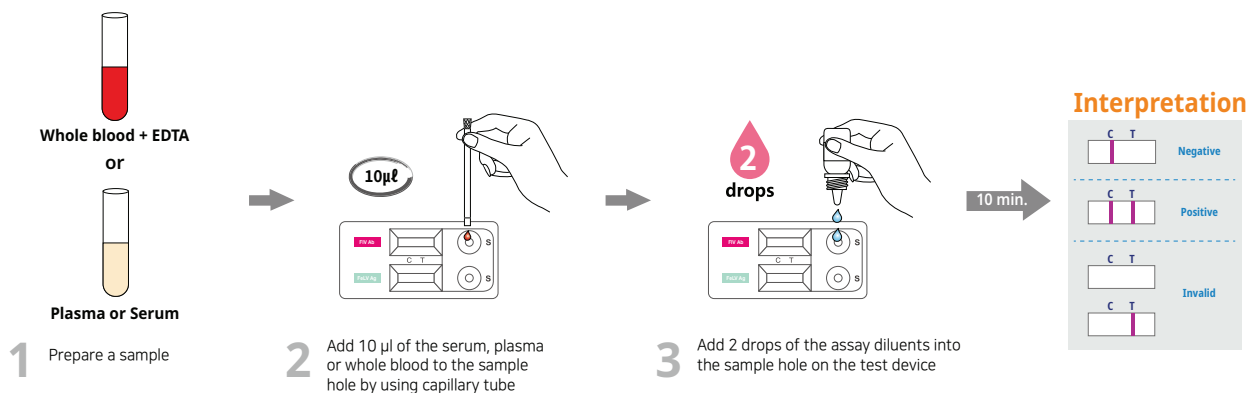
▪ **FeLV Ag test**

To completely eliminate any risk to an established household when bringing in a new cat. A follow-up test should be performed at least 90 days after the initial test or possible exposure to FeLV, because cats may be in the early stage of infection at the time of the first test.

▪ **Kitten**

FIV Ab tests have to be interpreted carefully in kittens less than 6 months of age. Kittens up to 12 weeks of age can have passively acquired anti-FIV antibody from mothers that are infected or have been vaccinated. If the kittens have a FIV positive result, the kitten should be retested after 8-12 weeks. If FIV negative, the kitten is unlikely to be infected, if still positive it is probably infected.

Test Procedure



Ordering Information

Cat. No.	Description	Type	Pack size
RC1204DD	FIV Ab/FeLV Ag	Dual Device	10 Tests/Kit

FIV Ab/FeLV Ag 2.0

General Information

Purpose : Detection of feline antibody against Feline Immunodeficiency virus (FIV) and Feline Leukemia virus (FeLV) antigen

Principle : Immunochromatographic assay

Specimen : Feline whole blood, plasma or serum

Materials provided :

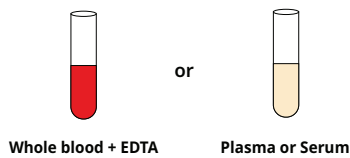
- Anigen Rapid FIV Ab / FeLV Ag 2.0 test device
- Assay diluents bottle
- Anticoagulant tube
- Disposable capillary tube

Special Features :

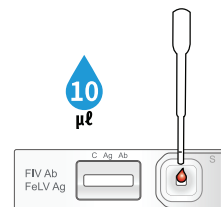
- One-step testing procedure : Quick & Accurate
- High sensitivity and specificity



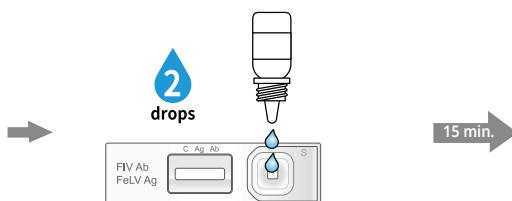
Test Procedure



1 Prepare a sample



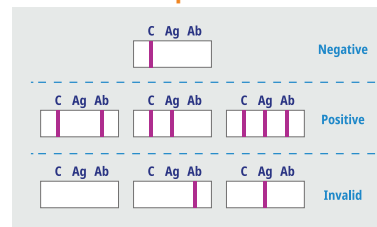
2 Add 10 µl of the serum, plasma or whole blood to the sample hole by using capillary tube



3 Add 2 drops of the assay diluents into the sample hole on the test device

15 min.

Interpretation



Ordering Information

Cat. No.	Description	Type	Pack size
RC1205DD	FIV Ab/FeLV Ag 2.0	Dual Device	10 Tests/Kit

FeliCheck-3

General Information

Purpose : Detection of feline antibody against Feline Immunodeficiency virus (FIV), Feline Leukemia virus (FeLV) antigen, and feline antibody against *D. immitis*

Principle : Immunochromatographic assay

Specimen : Feline whole blood, plasma or serum

Materials provided :

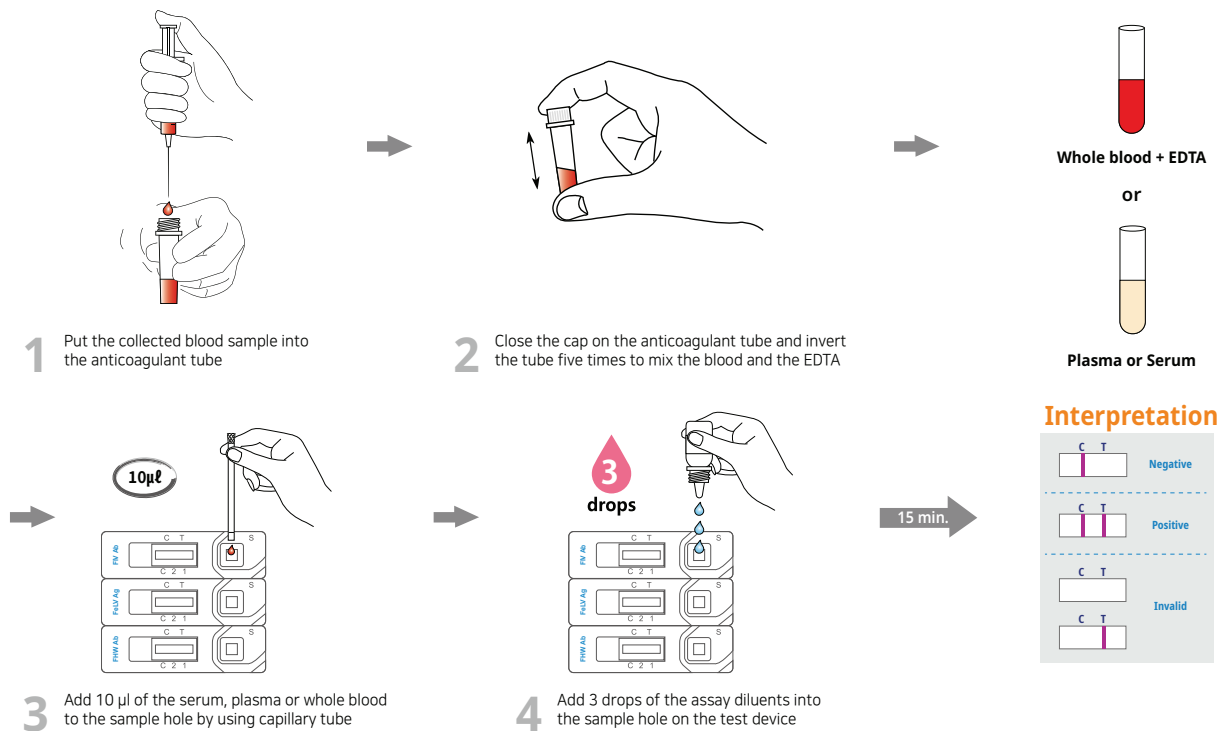
- Anigen Rapid FeliCheck-3 test device
- Assay diluents bottle
- Anticoagulant tube
- Disposable capillary tube

Special Features :

- One-step testing procedure : Quick & Accurate
- High sensitivity and specificity



Test Procedure



Ordering Information

Cat. No.	Description	Type	Pack size
RC2210CC	FeliCheck-3	Triple Device	5 Tests/Kit



Manufactured by

BioNote, Inc.

22 Samsung 1-ro 4-gil, Hwaseong-si, Gyeonggi-do 18449, Republic of Korea
TEL: 82-31-211-0516 | FAX: 82-31-8003-0618 | www.bionote.co.kr