



## In-Clinic Titre Test to Validate Your Patients Protection

- Provides **semi quantitative serological results** for the three core vaccines
- Checks these three vaccines in **one test in the veterinary clinic or lab**
- Supplies **results within 23 minutes**
- **Does not require a lab** or lab technician to perform the test

*WSAVA and AHAHA vaccination guidelines recommend the use of titre tests in the following cases:*

- Determining whether a puppy/kitten has responded to vaccination
- Titre test **INSTEAD** of automatic triennial core revaccination for adult dogs/cats
- Testing of newly adopted adult dogs/cats of unknown vaccination history
- Management of outbreaks in shelters

*Determines dog and cat antibody titre to:*

### Canine

- Infectious Hepatitis (ICH)
- Parvovirus (CPV)
- Distemper (CDV)

### Feline

- Panleukopenia (FPLV)
- Herpes Virus (FHV)
- Calici Virus (FCV)



**Tel:** +44 (0)1204 669033 (Option 1)  
**Fax:** +44(0)1204 669034  
**Email:** [sales@woodleyequipment.com](mailto:sales@woodleyequipment.com)  
**Web:** [www.woodleyequipment.com](http://www.woodleyequipment.com)

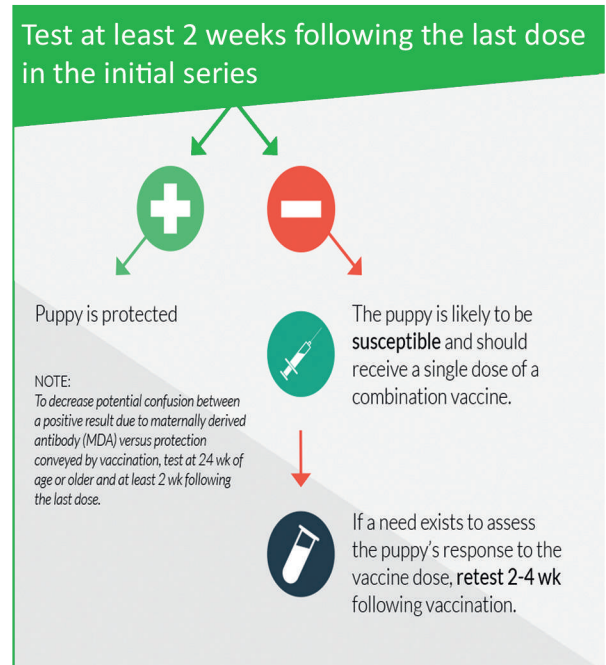
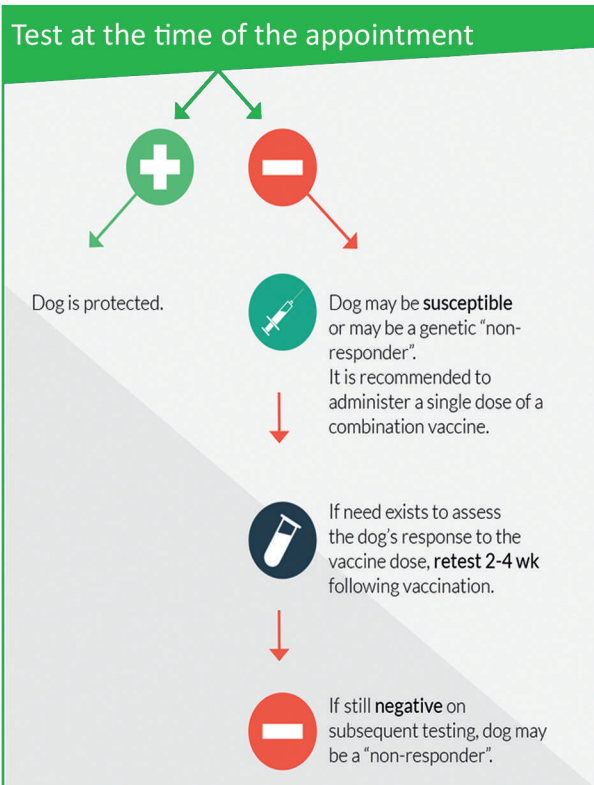
**WOODLEY**  
EQUIPMENT COMPANY LTD.

OLD STATION PARK BUILDINGS, ST. JOHN STREET, HORWICH, BOLTON, LANCASHIRE, BL6 7NY, UK

## Excerpts from AAHA Vaccination Guidelines for two major titre testing indications:

To assess the immunity when there is a prior vaccination history in an adult dog but the dog is due (or is overdue) for a scheduled booster.

To assess the immunity following completion of the initial vaccination series in puppies over 24 weeks of age.



## VACCICheck®

Tel: +44 (0)1204 669033 (Option 1)

Fax: +44(0)1204 669034

Email: sales@woodleyequipment.com

Web: www.woodleyequipment.com

## WOODLEY EQUIPMENT COMPANY LTD.

OLD STATION PARK BUILDINGS, ST. JOHN STREET, HORWICH, BOLTON, LANCASHIRE, BL6 7NY, UK