



Veterinary Immunoassay Analyser Evaluation

📍 Old Station Park Buildings, St Johns Street, Horwich, BL6 7NY

☎ +44 (0) 1204 669033

🌐 www.woodleyequipment.com

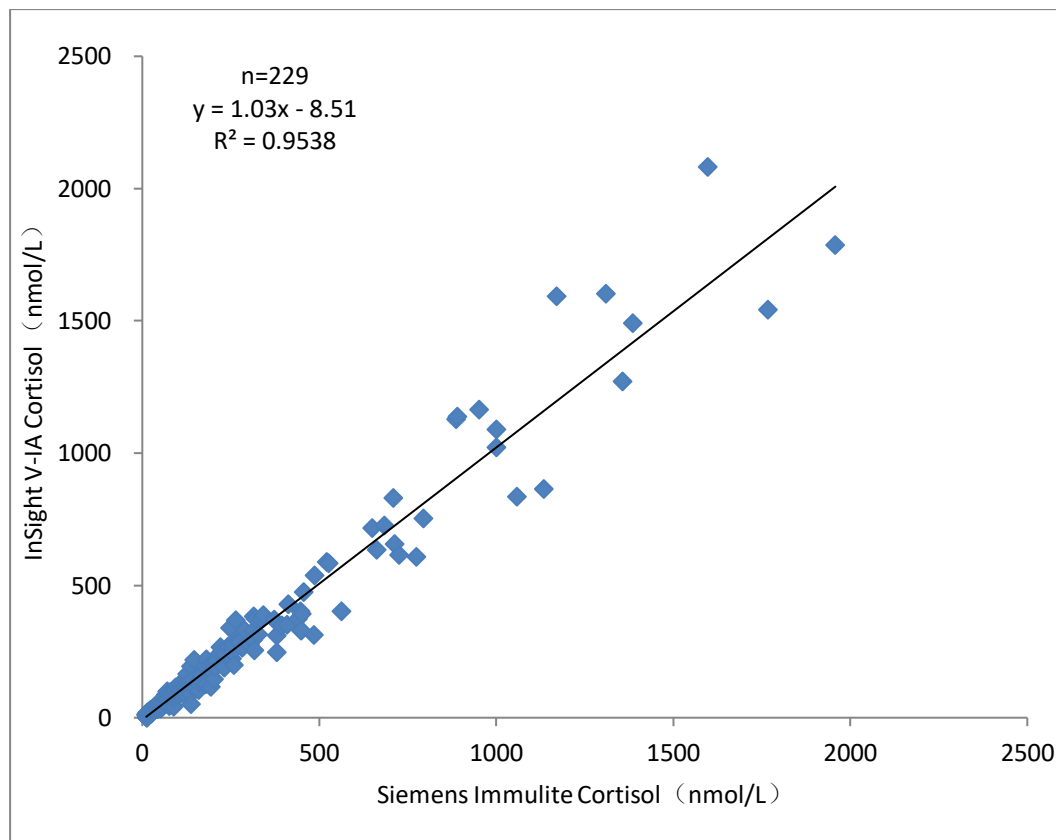
The InSight V-IA is an easy to use veterinary Immunoassay analyser providing accurate and reliable results in 3-15mins. The InSight V-IA uses immunofluorescence technology for accurate results. A competitive binding assay is based upon the competition of labelled and unlabelled analytes for a limited number of antibody binding sites. Unbound antibodies and immunocomplexes migrate along the nitrocellulose membrane towards the test line.

The unbound antibodies are then captured by antigens immobilised on the test line. The fluorescent signal intensity reflects the amount of analytes captured and is measured by the InSight V-IA.

Canine Cortisol

Cortisol is a hormone that regulates metabolism and is used to help diagnose adrenal disorders.

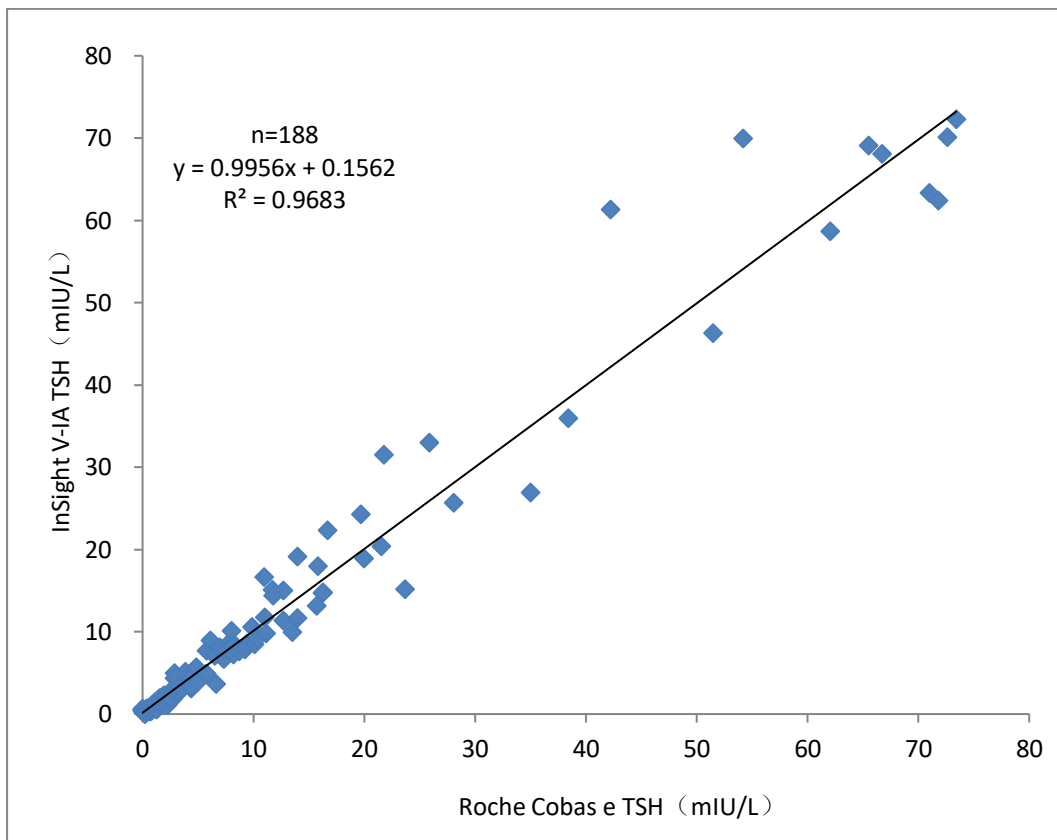
		Siemens Immulite		Accuracy (%)
		+	-	
InSight V-IA	+	125	6	94.70
	-	7	91	93.81
Total		132	97	94.32



Canine TSH

TSH is used as an aid to diagnose thyroid function.

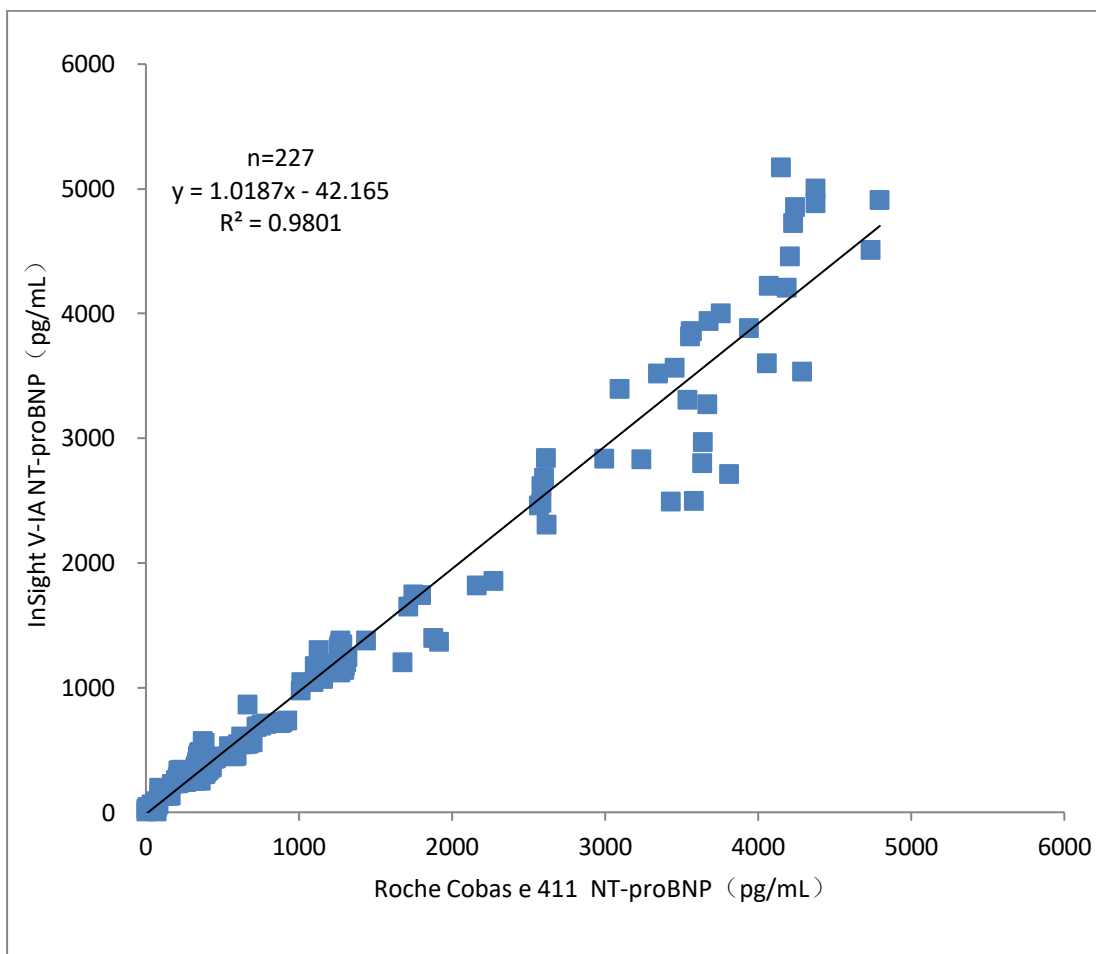
Hypothyroidism		Roche Cobas e		Accuracy (%)
		+	-	
InSight V-IA	+	40	4	95.24
	-	2	142	97.26
Total		42	146	96.81



Canine NT-proBNP

NT-proBNP is used to evaluate myocardial function.

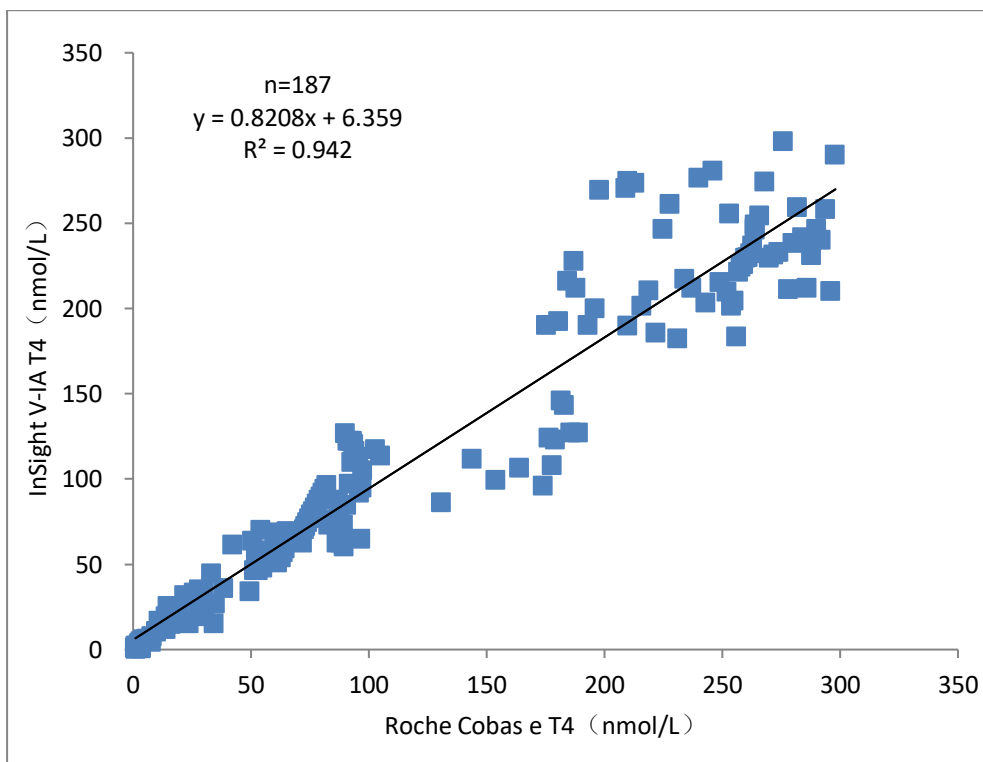
		Roche Cobas e 411		Accuracy (%)
		+	-	
InSight V-IA	+	164	3	94.74
	-	6	54	96.47
Total		170	57	96.04



Canine and Feline T4

T4 is used to assist in the evaluation of thyroid function

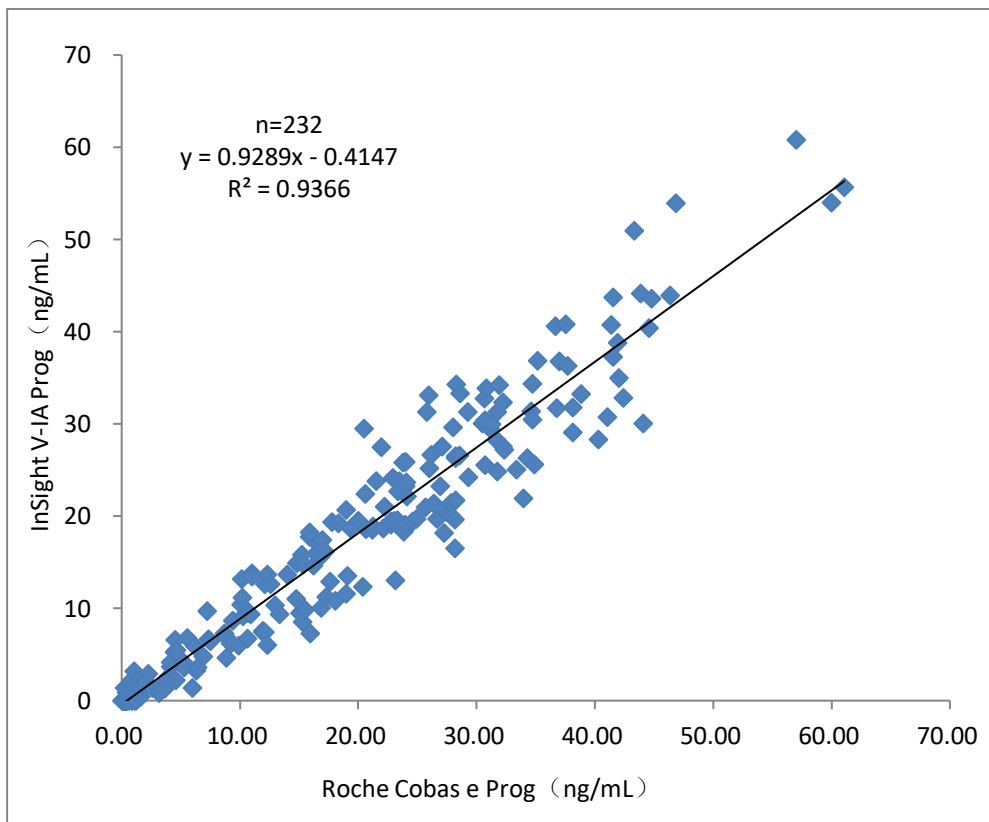
Hypothyroidism		Roche Cobas e		Accuracy (%)
		+	-	
InSight V-IA	+	59	5	95.16
	-	3	120	96.00
Total		62	125	95.72
Hyperthyroidism		Roche Cobas e		Accuracy (%)
		+	-	
InSight V-IA	+	55	1	93.22
	-	4	127	99.22
Total		59	128	97.33



Canine Progesterone

Progesterone is used as an aid to track ovulation, determine the best time for breeding or detect early pregnancy failure

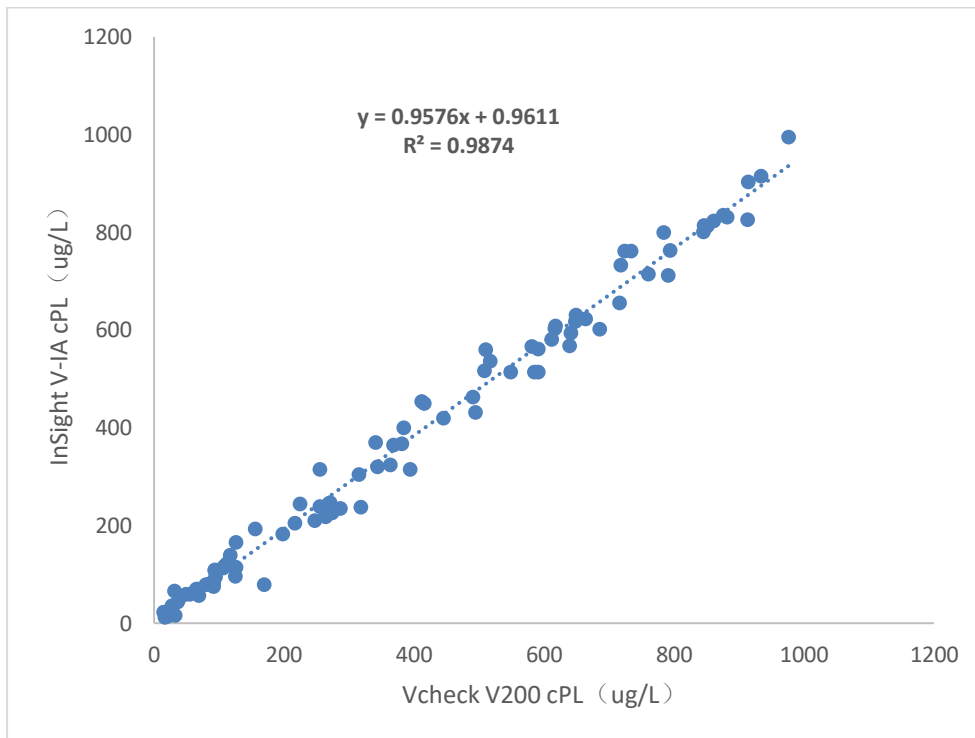
Ovulation and luteal function		Roche Cobas e		Accuracy (%)
		+	-	
InSight V-IA	+	156	3	95.7
	-	7	66	95.7
Total		163	69	95.7



Canine Pancreatic Lipase (cPL)

cPL is used as an indicator for diagnosis of pancreatitis in dogs

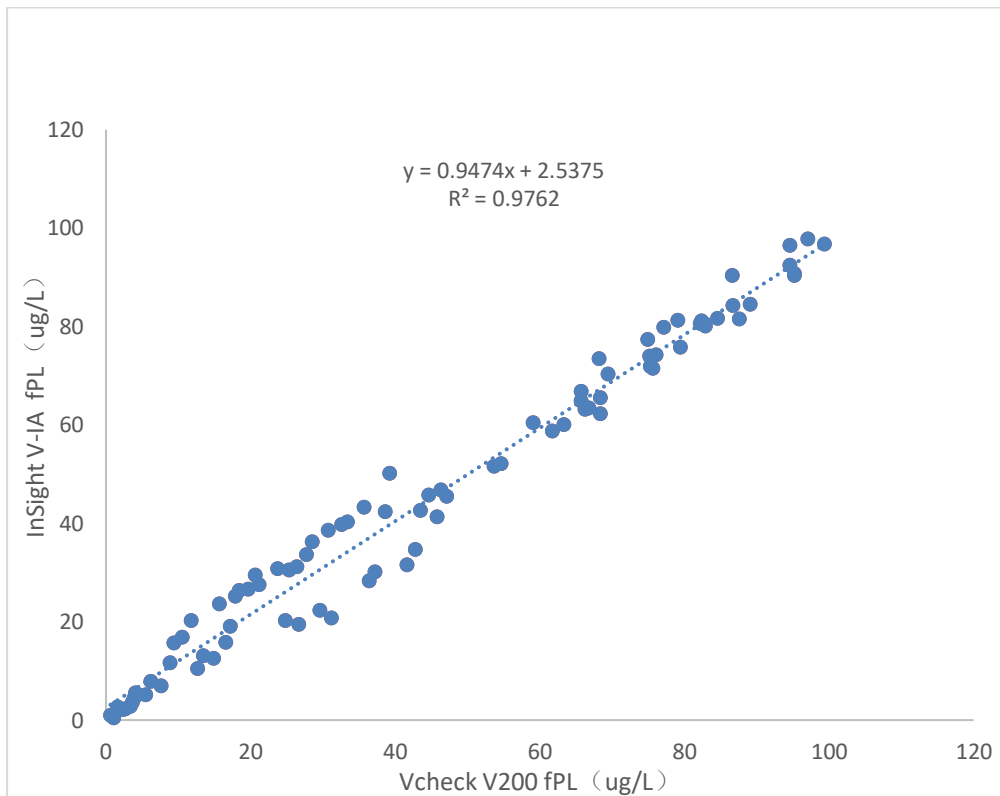
Vcheck V200 (ug/L)	InSight V-IA(ug/L)		Accuracy(%)
	+	-	
+	22	2	100%
-	0	26	86%
Total	22	28	92%



Feline Pancreatic Lipase (fPL)

fPL is used as an indicator for diagnosis of pancreatitis in cats

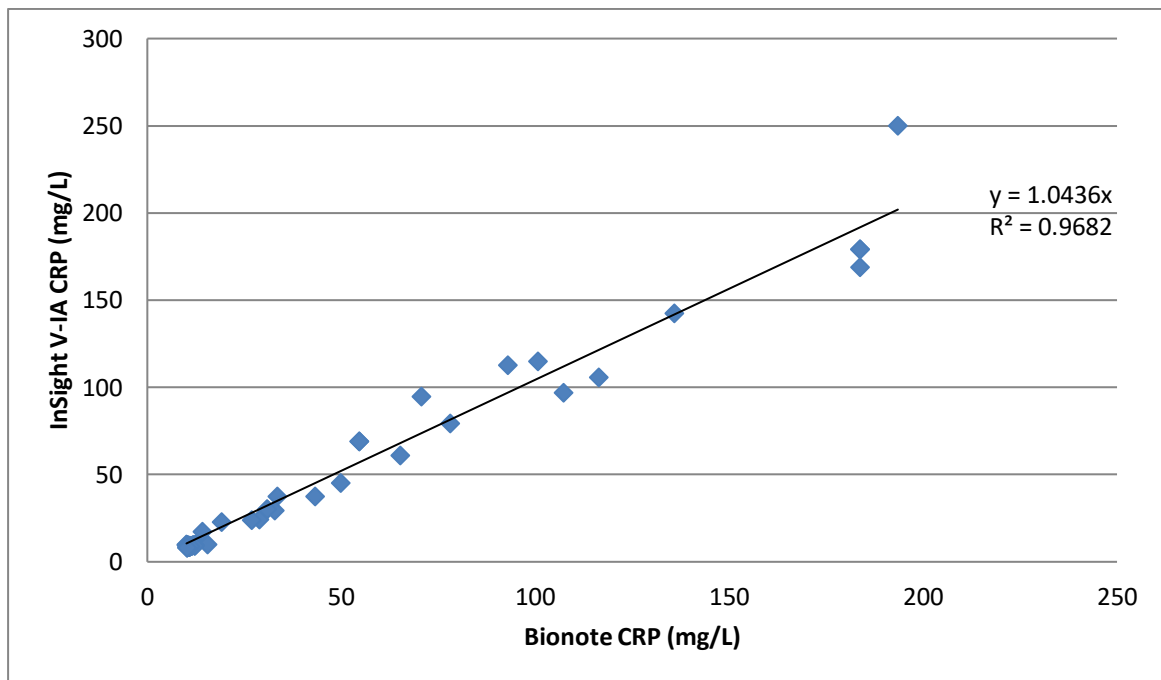
Vcheck V200 (ug/L)	InSight V-IA(ug/L)		Accuracy(%)
	+	-	
+	33	3	100%
-	0	14	86%
Total	33	17	92%



Canine CRP

cCRP is used as a general marker for inflammatory response.

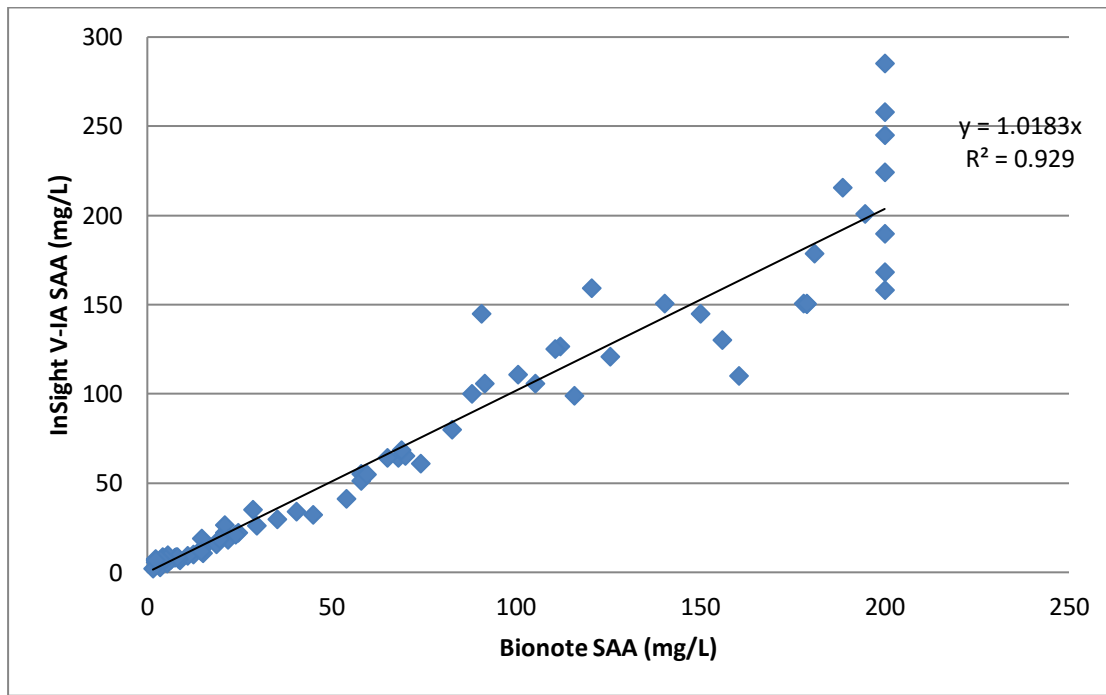
	InSight V-IA(mg/L)		Accuracy(%)	
	+	-		
Bionote (mg/L)	+	33	0	100%
	-	0	17	100%
Total	33	17	100%	



Feline SAA

SAA is used as a general marker for inflammatory response

Bionote (mg/L)	InSight V-IA(mg/L)		Accuracy(%)
	+	-	
+	59	3	100%
-	0	14	82%
Total	59	17	92%



HbA1C

HbA1C used as an aid to diabetes diagnostic testing

HbA1C NOW+ (%)	InSight V-IA (%)		Accuracy(%)
	+	-	
+	40	1	100%
-	0	9	92%
Total	40	10	92%

