

For All Customers

Skyla VB1

Perform a Single Assay test

Single Assay (SA) Analysis Kit

SA Metal Carrier

* Repeat use

SA cartridges

* Separate sell

Balancer (Special barcode on it)

* Do NOT use “used SA cartridge” as balancer.

50 μ L Pipette

* in blue color, smaller

SA Diluent Tube

* 600 μ L diluent of de-ion water
* Separate sell

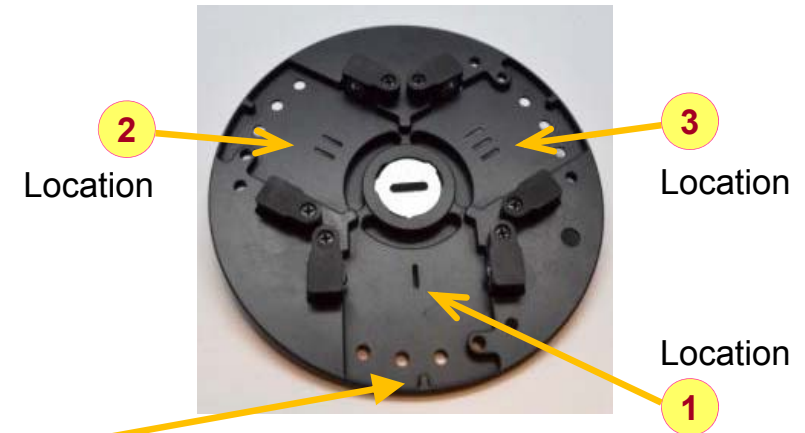
Tip

* The same as 200 μ L's one



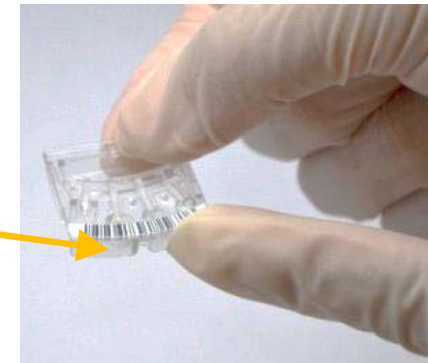
Step 1 : Prepare the SA Cartridges -1

1. There are 3 locations on SA cartridge carrier.
No difference in test locations.

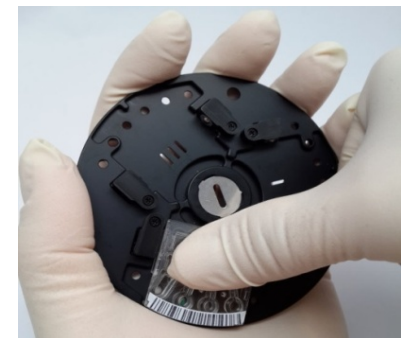


2. Align the groove below the barcode of SA cartridge to the raised tag on the outer edge of the metal carrier.

→ please handle the cartridge with glove (no powder)



3. When aligned, PRESS the SA cartridge onto the carrier.
Push to **click** the SA cartridge onto the carrier firmly.



Step 1 : Prepare the SA Cartridges -2

4. Place up to three SA cartridges for analysis each time.

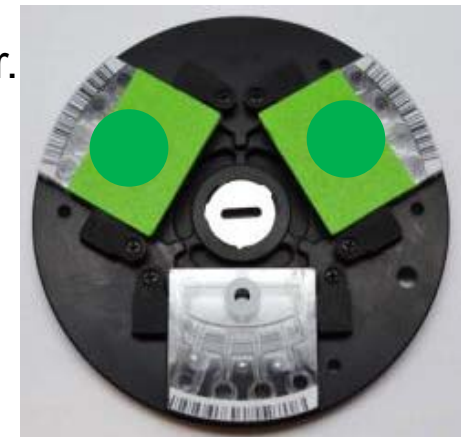
→ Only allow to test the sample from one patient.



5. Be sure to place 3 cartridges at all time to keep the balance of the carrier.

→ Put “Balancer” on the empty slot(s) if any.

→ Do NOT use “used SA cartridge” as balancer,
it will confuse you about the result.
System will not tell you which one is used cartridge.



Step 2 : Centrifuge to get Plasma Sample

6. The diluent maybe chilled to attach inside of cover or inner wall of Tube and might be drop out after opened.

- Please centrifuge the diluent tube 10sec before use.
(before take off its cover)
- It is required **600uL±1% de-ion water** in the Diluent Tube precisely.
- Make sure to use skyla® “**SA Diluent Tube**” to secure the precision.



7. Centrifuge the whole blood sample in Lithium Heparin Tube to get **plasma sample**.

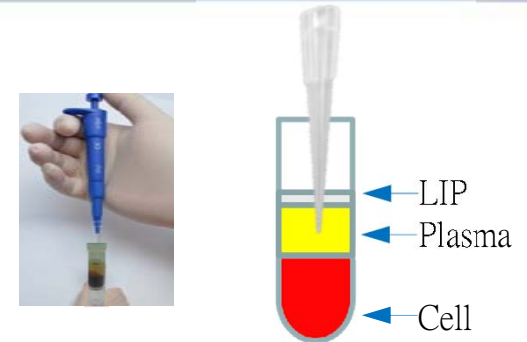
It is suggested more than 200uL whole blood to be centrifuged to get **50uL plasma**.

- Enough centrifuge time should be taken. (refer to your centrifuge manual.)



Step 3 : Dilute the Sample for 13X

8. Use 50uL pipette (in blue color) to take plasma (serum).



9. Inject 50uL plasma to the skyla® “SA Diluent Tube” for mixing.

- Tip could touch the inner wall of tube, but do **NOT** touch the diluent (fluid) inside.
- To reduce tolerance, discard the tip for next pipette operation, because the tip may attach some fluid on it.



10. Place the cover back to the tube firmly.

Invert the tube **at least 10 times** to **well mix** the sample with diluent.

13X dilute → 50uL (plasma) + 600uL (de-ion water) = 650uL specimen

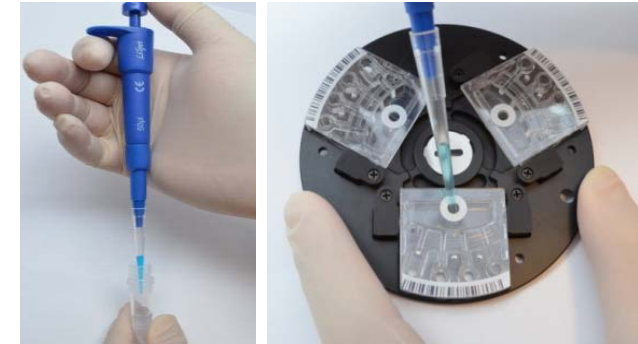


Step 4 : Inject the Sample

11. For each SA cartridge, operate the same **50 μ L pipette twice**, to inject **total 100uL** diluted specimen.

→ Each SA cartridge require 100uL diluted specimen.

→ Analyze 3 SA cartridges require total 300uL diluted specimen.

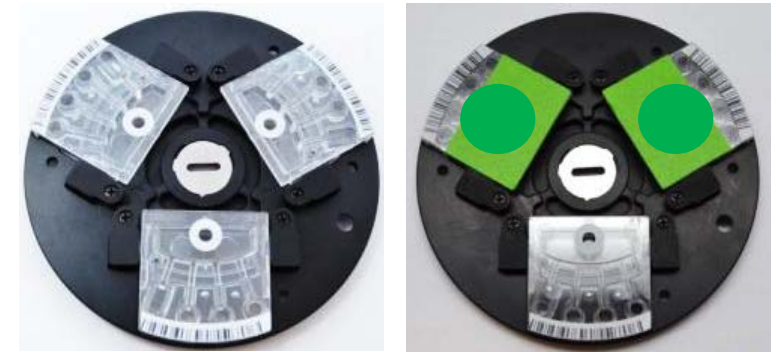


12. Make sure to include 3 SA cartridges on the carrier.

→ Unbalance induce the vibration, analysis will be failed.

→ Do not attach/detach cartridge again when the carrier carry the SA cartridges with specimen inside.

→ Do not use a used cartridge as balancer, it will make result confused.



Make sure the SA Carrier is balanced

Step 5 : Analyze to get Report

13. Work as a normal VB1 reagent disc :

Press START to launch a test.

Place the SA metal carrier on the tray.

Follow the same steps as reagent disc.

→ SA analysis time: about 10mins



14. The result will be listed according to the SA location 1~3 respectively.

Example : Location 1 : Na+K

Location 2 : GLU

Location 3 : Empty which mean a Balancer on it

Each Location will also indicate the information with

1. Production Code (PR Code) of the SA cartridge
2. QC Result of the SA cartridge
3. Interference status of the specimen

```
skyla VB1 Chemistry Analyzer
Single Assay Analysis Result

Taiwan University   Hospital
30-09-2014          17:05:07
Sample Type:        Patient
Patient ID:          123456789012
Name:               Hello Kitty
Species:             Feline
Gender:              Female
Weight:              3 Kg
Age:                 13 Month

Location 1 - - - - -
PR Code:             123456
QC: Sample Interference
LIP:++   HEM:+   ICT:0
              156       021       005

- - - - -
Item   Result   Range   Unit
- - - - -
Na    ↑% 160    135-145  mmol/L
K      3.2    3.5-5.5  mmol/L
#Na/K   ~

Location 2 - - - - -
PR Code:             123456
QC: Sample Interference
LIP:++   HEM:+   ICT:0
              153       023       005

- - - - -
Item   Result   Range   Unit
- - - - -
GLU   ↑  130    70-100  mg/dL

Location 3 - - - - -
Empty

- - - - -
AS20AES0T
```