

INTERNATIONAL VETERINARY DISTRIBUTORS GUIDE

Issue 5.0

Delivering excellence to our customers for over
35
years

InSight[®] Analysis



Advanced
Partner

Laboratory Diagnostics
Point of Care Solutions

SIEMENS
Healthineers

"PASSIONATE ABOUT LABORATORY DIAGNOSTICS"

WOODLEY
EQUIPMENT COMPANY LTD.

InSight V5^R Veterinary Haematology Analyser

A fully automated multi-species Haematology Analyser with Reticulocytes

5 PART DIFFERENTIAL WITH RETICULOCYTES

Parameters Available

WBC	LYM#	HGB	HCT	Retic#
NEU%	EOS%	MCV	PLT	Retic%
NEU#	EOS#	MCH	MPV	
MON%	BASO%	MCHC	PDW	
MON#	BASO#	RDW-CV	PCT	
LYM%	RBC	RDW-SD		

- Quick and easy to use
- Small sample volume - 20µl whole blood
- 5-part differential, 25 parameters
- Species specific reference ranges
- Independent channel for Basophil measurement
- Powerful capability to flag abnormal cells
- Fully automated
- Touch screen
- Low maintenance
- Results transmitted via InSight p-LINK to Practice Management Systems



InSight V5^R Veterinary Haematology Analyser

A fully automated multi-species Haematology Analyser

5 PART DIFFERENTIAL WITH LASER TECHNOLOGY.

Parameters Available

WBC	LYM#	HGB	HCT
NEU%	EOS%	MCV	PLT
NEU#	EOS#	MCH	MPV
MON%	BASO%	MCHC	PDW
MON#	BASO#	RDW-CV	PCT
LYM%	RBC	RDW-SD	

- Quick and easy to use
- Small sample volume - 15µl whole blood
- 60 second analysis time
- 5-part differential, 23 parameters
- Species specific reference ranges
- Independent channel for Basophil measurement
- Powerful capability to flag abnormal cells
- Fully automated
- Touch screen
- Low maintenance
- Results transmitted via InSight p-LINK to Practice Management Systems



InSight V3^R PLUS Veterinary Haematology Analyser

A fully automated multi-species Haematology Analyser

3 PART DIFFERENTIAL WITH EOSINOPHIL FLAG.

Parameters Available

WBC	RBC	RDW_SD
LYM%	HGB	PLT
MID%	HCT	MPV
GRAN%	MCV	PDW
LYM#	MCH	PCT
MID#	MCHC	P_LCR
GRAN#	RDW_CV	P_LCC

- Quick and easy to use
- Small sample volume - 8.5µl whole blood
- 60 second analysis time
- 3-part differential, 21 parameters with 3 histograms and eosinophil flag
- Species specific reference ranges
- Impedance technology
- Stores up to 100,000 results
- Fully automated
- Touch screen
- Low maintenance
- Results transmitted via InSight p-LINK to Practice Management Systems



InSight^R p-LINK To facilitate connectivity and results integration with Practice Management Systems



Cloud based access to Lab Reports

- InSight p-LINK is a small computer which enables sample results from in-practice analysers to be transferred to a Vet Practice network folder with results in Text, CSV, PDF or VetXML formats
- Now includes cloud based access to lab reports
- Quick and easy to set up via a wired LAN point or Wi-Fi
- Works in the background - no user interaction required

InSight[®] AI-Cytology

Veterinary Haematology
Analyser with Morphology

7-Part Differential Analyser providing full blood count with retics,
NRBC and cell morphology analysis using AI technology

Displays cells as real time conventional images

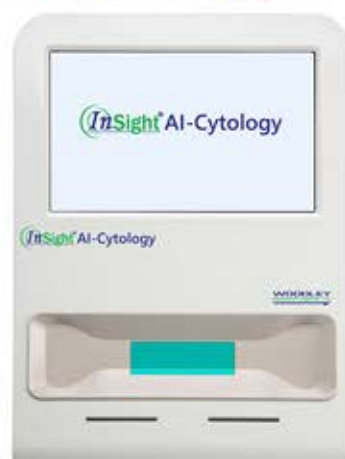
InSight AI-Cytology is designed for automated, comprehensive testing of blood, faecal & urine sediment samples across various species, including small mammals and reptiles.

An integrated solution for morphological examinations in veterinary laboratories.

- One device for blood, faecal & urine sediment testing
- Displays cells as real time conventional images
- Blood: 46 parameters + morphological report
- Faeces: 30 parameters + morphological report
- Urine: 21 parameters + morphological report
- Smear Free: Microfluidic technology
- Maintenance Free Design: No liquid lines
- Reagents stored at room temperature
- Auto-Counting: AI automatically recognises & counts
- Expanded Scope: 1000+ Microscopic fields per sample

**BLOOD, FAECAL & URINE SEDIMENT
TESTING ON ONE DEVICE**

For UK & Scandinavian
Territories Only



Online remote assistance
directly to your analyser

Blood Testing

White Blood Unique Cell Parameters	Band neutrophils (NST; # and %) Segmented neutrophils (NSG; # and %) Erythrocyte ghost (ETG; # and %)
Red Blood Cell Parameters	Nucleated Red blood cell (NRBC; # and %) Reticulocyte (RET; # and %) Mean reticulocyte volume (MCV) Reticulocyte distribution width (RDW-CV)
Platelet Parameters	Large Platelet (LPLT; # and %) Agglutinated Platelet count (APLTP)
Morphological Report	3-page morphological colour report

Urine Testing

Cast (4 Categories)	Hyaline cast; Cellular cast; Granular cast; Waxy cast Struvite; Calcium oxalate monohydrate; Calcium oxalate dihydrate; Calcium carbonate; Uric acid; Cystine
Crystal (6 Categories)	
Cells (6 Categories)	WBC; RBC; Renal tubular epithelial cell; Squamous epithelial cells; Transitional epithelial cells
Germ	Sperm
Others	Cocci; Bacillus; Yeast Lipid drop; MUCUS

Faeces Testing

Detection Principle	1300 fields of view
Parasite Eggs (6 Categories)	Ascaris ascaris; Hookworm; Dipylidium caninum; Tapeworm; Spirometra; Alaria alata Trichostrongylus Gardzia lamblia
Infectious Protozoa	3 types of Isosporium coccidia Intestinal bacteria
Germs	Pathogenic bacteria (Campylobacter; Bacillus; Serpentine spirochete; Helicobacter; Yeast)
Cells	WBC; RBC; EC
Digestive Function	Starch granule; Lipid drop; Plant fibre; Muscle fibre

InSight V-CHEM[®]

Veterinary
Chemistry Analyser

ACCURATE RESULTS.
ZERO MAINTENANCE.

Panel Test Portfolio

- Chem 24
- General Health
- General Health Plus
- Preanaesthetic
- Preanaesthetic Plus
- Liver & Renal
- Electrolytes
- Critical Care
- Ammonia Test
- Avian & Reptile
- Large Animal
- Equine
- Diabetes
- Quad Test

- 8 minutes analysis time for Whole Blood, 7 minutes for Serum and Plasma
- Self-contained, single-use reagent discs
- Built-in Realtime Quality Control (RQC) system, self-calibrating reagent discs
- Automatic self-test and precision calibration
- Touch screen
- Maintenance free
- Results transmitted via InSight p-LINK to Practice Management Systems

Parameters Available

ALP, ALT, AST, BUN, CREA, GLU, ALB, TP, TBIL, AMY, Ca, PHOS, Na⁺, K⁺, Cl⁻, BA, GGT, CK, CHOL, tCO₂, LDH, Mg, LAC, pH, NH₃, UA, CO₂, TG, FRU, GLO*, ALB/GLO*, BUN/CREA*, Na⁺/K⁺, AST/ALT*, A/G*, Ca/PHOS*

*Calculated parameters



epoc Critical Care/Blood Gas Analyser

A global leader in handheld Critical Care/Blood Gas!

Test Card Contains All Parameters

Measured Analytes:

pH, pCO₂, pO₂, Na⁺, K⁺, Cl⁻, Ca⁺⁺, Glu, Lac, HCT, BUN, Creatinine, tCO₂

Calculated Values:

HCO₃, BE (ecf), BE (b), sO₂, Hgb, AGapK

Features

- Accurate blood gas, electrolyte and critical care biochemistry results in 3 minutes
- Room temperature card storage
- 92µl sample, fresh whole blood (arterial, venous or capillary)
- Veterinary species specific software
- Portable handheld system with rechargeable battery & Bluetooth printer
- Ready to use anytime, anywhere: in-practice, theatre, patient side or equine yard
- Wi-Fi and Bluetooth enabled - easy transfer of data



NEW epoc NXS Host

- Automated software updates through Wi-Fi
- Simple, intuitive interface, similar to that of a smartphone
- Touch screen navigation including 'Show me how' videos
- Colour coded results for easy interpretation

Advanced
Partner

Laboratory Diagnostics
Point of Care Solutions

SIEMENS
Healthineers

InSight V-IA^{PLUS} Veterinary Immunoassay Analyser

An easy to use Immunoassay Analyser providing accurate & reliable results in 3-15 minutes.

LOW COST, REFERENCE LAB QUALITY, IMMUNOASSAY TESTING.

Canine Tests:

- cPL
- T4
- TSH
- Cortisol
- Progesterone
- Alpha-fetoprotein
- Relaxin
- Distemper
- Parvovirus
- Rabies Virus
- Ehrlichia
- Toxoplasma Gondii
- Parvovirus/Coronavirus
- Distemper/Parvovirus/ Infectious Hepatitis Virus

- cCRP
- D-Dimer
- HbA1c
- NT-proBNP
- Troponin I
- CPSE
- HP (Helicobacter Pylori)
- Lyme Disease
- Coronavirus
- Giardia
- Rotavirus
- Cystatin C (SDMA alternative)
- Anaplasma Phagocytophilum
- NT-proBNP/Troponin I

Feline Tests:

- fPL
- fTT4
- FIV Ab
- FeLV Ag
- TSH
- Cortisol
- Troponin I
- Calicivirus
- Herpes
- Rabies Virus
- Toxoplasma Gondii
- NT-proBNP/Troponin I
- Cystatin C (SDMA alternative)
- Herpes/Calicivirus/Panleukopenia Virus

- fSAA
- D-Dimer
- HbA1c
- NT-proBNP
- HP (Helicobacter Pylori)
- Coronavirus
- Panleukopenia Virus
- Giardia
- Rotavirus

Equine Tests:

- eACTH
- eSAA
- Progesterone
- Foal IgG

Tests In Development:

- Equine Insulin
- Fructosamine

Integrates with Practice Management Systems



InSight[®] Equine-IA Equine Immunoassay Analyser

A portable, handheld, easy to use Equine Immunoassay Analyser providing quick, accurate & reliable results.

LOW COST, PORTABLE EQUINE IMMUNOASSAY TESTING
eACTH, eSAA, eProg, Foal IgG, Insulin

Tests Available

- Equine ACTH
- Equine SAA
- Equine Progesterone
- Foal IgG

Tests in Development

- Equine Insulin

- Immunofluorescence technology
- Testing time 3-15 minutes (depending on analyte)
- Portable, with built-in rechargeable battery - ready to use anytime, anywhere
- Easy to use with touch screen technology
- Wi-Fi and Bluetooth connectivity - easy transfer of data
- Accurate and reliable
- Multi-language operation system
- Wi-Fi connectivity
- Reagents stored at room temperature
- Touch screen
- Maintenance free
- Results transmitted via InSight p-LINK to Practice Management Systems



i-Smart 30 VET Electrolyte Analyser

Fast & Accurate

- Fast, accurate analysis
- Tests electrolytes Na⁺, K⁺, Cl⁻ & iCa²⁺
- 60µl sample volume
- Results in 35 seconds
- Species specific reference ranges

All-in-One Cartridge

- Cartridge contains electrodes, all consumables & waste
- No user maintenance
- Automatic calibration



Measured electrolytes

Na ⁺	20 - 250 mmol/L
K ⁺	0.5 - 20.0 mmol/L
Cl ⁻	20 - 250 mmol/L
iCa ²⁺	0.25 - 5.00 mmol/L

InSight[®] V-EL Veterinary Electrolyte Analyser

- Tests electrolytes K⁺, Na⁺, Cl⁻, iCa²⁺ & iMg²⁺ in whole blood on 1 single-use cartridge
- Accurate results in 5 minutes
- Auto-calibration before each test
- 110µl whole blood sample volume
- Dry chemistry method, single-use cartridge eliminates the risk of contamination
- Maintenance free - no fluid pipe inside the device, no reagent pack required
- Integrated barcode reader and printer
- Portable



5 Electrolytes on 1 Cartridge



Veterinary Glucose Meter

g-Pet PLUS Veterinary Glucose Meter is calibrated specifically for use in Dogs, Cats, Horses and Rabbits ensuring an accurate result is reported for each species.

- Biosensor auto code technology
- Accurate results
- Easy to use
- Small sample of whole blood (0.7µl)
- Accurate results displayed within 5 seconds
- Readable range 1.1 - 33.3 mmol/L
- 500 result automatic memory
- HCT range 20-60%
- Lifetime warranty



Calibrated for Canine, Feline, Equine and Rabbit use



Veterinary Lactate Meter

L-Pet only requires a small drop of blood (3µl). The test strips draw blood in and then measure using an advanced biosensor specific for lactate concentration in blood.

- Advanced Biosensor Test Strips
- Small sample size (3µl)
- Results in less than 45 seconds
- Large LCD display
- Stores up to 300 results
- Easy operation
- Portable
- Specific Lactate Analyser QC Material available
- 5 year warranty



An easy to use handheld meter providing blood lactate results in just 45 seconds



The InSight HCT Meter is a low cost handheld meter for the measurement of Canine, Feline and Equine haematocrit and total haemoglobin in capillary and venous whole blood.

- Calibrated for Dogs, Cats and Horses
- 30 second test time
- One drop of whole blood (Venous, Capillary or EDTA)
- HCT results reported as %



Calibrated and validated specifically for Dogs, Cats and Horses



InSight Keto Vet provides accurate, quantitative blood beta-hydroxybutyrate (BHB) results, the gold standard for detecting subclinical ketosis in dairy cattle and diabetic ketoacidosis in companion animals.

- Easy to use
- Portable - can be used in the field
- No calibration required
- Accurate, quantitative blood ketone results in 10 seconds
- Small 0.5µl sample size
- Capillary, venous or arterial whole blood
- Stores 450 results



StatStrip® Creatinine Xpress Meter

For use in the quantitative determination of creatinine in fresh capillary, venous and arterial whole blood, reporting accurate results in just 30 seconds.

- Rapid assessment of kidney function
- Accurate, quantitative results in 30 seconds
- Easy to use and portable
- Small 1.2µl sample size
- Capillary, venous or arterial whole blood
- Correct results for HCT
- No calibration required
- Eliminates interfering substances
- Stores 400 results



The InSight Mini Chem is intended for the quantitative determination of Urea (UR), Creatinine (CR) and Uric Acid (UA) in capillary whole blood, venous whole blood, plasma (lithium heparin) and serum.

- Easy to operate
- Portable meter
- Quick and accurate results in under 5 minutes
- Multi function - 3 parameters on 1 reagent strip
- Bluetooth built-in to enable transfer of data to your phone, tablet or PC
- Rechargeable - built-in Lithium-ion battery
- Small sample requirement - 35µl of whole blood, plasma or serum
- Stores up to 500 results



3 Parameters on 1 Reagent Strip

InSight[®] Urinalysis

InSight[®] Urinalysis Urine Analyser and Test Strips

Urinalysis is an important tool in disease detection, as well as monitoring and screening animal health. Abnormalities can be indicative of diseases of the urinary system as well as other organ systems, including liver function, acid base status and carbohydrate metabolism.

InSight Urinalysis is an easy to use Veterinary Urine Analyser that provides fast, accurate results and can test up to 13 parameters on one test strip.

- Easy to use
- Fast, accurate results
- Compact and portable
- Up to 13 parameters on one test strip
- Auto-recognition of test strips
- Stores up to 1,200 results
- Multiple species available
- Large LCD screen with touch keys
- Bluetooth connection to wireless printer
- Multi-language operation system
- Rechargeable battery
- Exclusive software for veterinary use

Parameters

- Leucocytes
- Ketone
- Urobilinogen
- Bilirubin
- Glucose
- Protein
- Specific Gravity
- pH
- Blood
- Ascorbic Acid
- Microalbumin
- Calcium
- Creatinine

**With Urine Protein/Creatinine ratio
& Microalbumin/Creatinine ratio**



**13 Parameters
On One Test Strip**

Vision V5000 Microscope

- LED illuminator
- Excellent optical resolution
- Wide-field eyepieces
- Dioptric compensation
- DIN achromatic objectives
4x, 10x, 40x, 100x
- Coaxial coarse and fine focusing



InSight[®] Microscope Eyepiece Adapter for Smartphones



- Mounts any smartphone to any microscope in minutes!
- Smartphone camera can then capture photos & videos for real-time viewing on smartphone screen, via video conferencing, emailing or sharing online

Capture & share microscopic images

PocketChem[™] BA Blood Ammonia Analyser

The PocketChem BA enables immediate testing and delivers fast, accurate results. With its lightweight and compact design, blood ammonia measurement can be conducted in the palm of your hand.

- Whole blood measurement
- Ready for use 24 hours a day
- Small 20µl sample volume
- Battery powered
- Easy to maintain
- Temperature compensation
- Lightweight and compact design
- Detachable printer available
- Supports the diagnosis of hepatic cephalopathy
- Helps detect and evaluate urea cycle defects
- Monitor patients with liver disease



World's only Point of Care Blood Ammonia Analyser

InSight[®] qLabs[®] PLUS Veterinary Coagulation Analyser

- Requires 1 drop of non-anticoagulated whole blood (10µl)
- PT/aPTT tested simultaneously on 1 test strip
- FIB test measures fibrinogen levels within 1-10 minutes from citrated whole blood
- Room temperature strip storage
- Fill test strip directly from syringe
- Liquid QC available
- No need to transfer sample into citrate tube
- 'Test count up' for immediate assessment
- User friendly colour touch screen
- Portable/handheld system with built-in rechargeable battery
- Bluetooth connectivity for software updates
- Charge analyser directly or easily connect to eStation to charge and print
- Automatically print & send results to a PC

**Calibrated & Validated
Specifically for
Canine & Feline Use**

**Fibrinogen Test
Now Available**



**Easily Connect to eStation
to Charge and Print**

Clinispin® Vet Combi Multi Purpose Veterinary Centrifuge



Dimensions:
381 (W) x 480 (D) x 185 (H) mm

The Clinispin Vet Combi is a high speed centrifuge equipped with a maintenance free drive, digital display and simple interface for silent and efficient operation. The combination rotor provides efficient separation of blood and urine samples with accurate Haematocrit determination.

- 3 pre-defined pre-sets for easy and rapid operation at one press of a button:
 - Serum/Plasma (12,000 RPM for 2 minutes) - 8 x 2ml
 - HCT/PCV (12,000 RPM for 5 minutes)
 - Urine (1,000 RPM for 1 minute)

Pre-sets can be varied for each centrifugation if required

- Rotor allows for quick and easy sample loading
- Maintenance free drive
- Digital display
- Easy to use
- Silent operation

**VERSATILE
COMBINATION ROTOR**

Clinispin® Mini Veterinary Centrifuge

- Small footprint, can fit in small workplaces
- Rotors supplied - 8 x 2ml and 16 x 0.2ml
- Digital display with microprocessor control
- Set variable speed and timer
- Electronic safety brake on lid opening for user safety
- Magnetic rotor for easy, tool free changing of rotor
- Starts and stops in seconds
- Lid safety interlock
- Interchangeable magnetic rotors (Micro Centrifuge Tube & PCR rotors)

**SMALL FOOTPRINT
FOR SMALL WORKPLACES**



Dimensions:
162 (W) x 157 (D) x 116 (H) mm

Clinispin® CT30

- Variable speed with precise RPM/RCF setting from 500 to 4000 RPM in steps of 10 RPM
- Supplied with 6 x 10ml horizontal tube rotor with adapters for smaller tubes
- Rapid horizontal separation
- Rotor options include horizontal swing out 6 tube & fixed angle 8 or 16 tube
- One switch change over from RPM to RCF
- Smart air flow design - quiet operation & low temperature rise
- Lid lock safety feature - opens automatically on run completion
- Automatic imbalance detection for safe operation



Dimensions:
381 (W) x 480 (D)
x 185 (H) mm

Clinispin® CT25

- 8 x 15ml rotor (Autoclavable SS holders)
- Precise RPM setting from 500 to 6500 RPM with least count of 100 RPM
- Automatic imbalance detection for safe operation
- Lid lock safety - opens automatically on run completion
- Timer setting 1 to 30 minutes & infinite mode
- One switch change over from RPM to RCF
- Accommodates most common collection tubes - comes with adaptors for 5ml, 7ml & 1.5/2ml tubes



Dimensions:
260 (W) x 244 (D)
x 205 (H) mm

InSight® Rapid Tests

The Woodley InSight range of veterinary rapid diagnostic tests are simple and easy to use and provide accurate results in just 10 minutes. Based on sandwich lateral flow immunochromatographic assays, the test kits contain 10 devices per box and are conveniently stored at room temperature (2°C - 30°C).

InSight Feline Calicivirus (FCV)

Feline Calicivirus (FCV) in saliva, nasal and eye discharge.

InSight FIV-FelV Combi

Feline Immunodeficiency antibody and Feline Leukaemia antigen in serum, plasma or whole blood.

InSight FIV

Feline Immunodeficiency antibody in serum, plasma or whole blood.

InSight FeLV

Feline Leukaemia antigen in serum, plasma or whole blood.

InSight Canine Parvovirus

Canine Parvovirus in faeces or vomit.

InSight Giardia

Giardia antigen in animal faeces.

InSight Leishmania Ab

Leishmania antibody in Canine serum or plasma.

InSight Heartworm

Heartworm antigen in Canine serum, plasma or whole blood.



InSight® V3-POC

Point of Care Haematology System

The InSight V3-POC is a fast, simple 3-Part Differential Veterinary Point of Care Haematology System with an integrated single-use reagent cartridge that can test 19 parameters in 1 test.

Features

- Portable - suitable for mobile applications
- No circulating fluids
- Analysis within disposable cartridges
- Suits all level of users
- Tests include CBC & CRP/SAA
- Quick and easy to use
- Run up to 15 tests per hour
- 3-part differential, 19 parameters & specific protein measurement (CRP/SAA)
- Stores up to 300,000 results
- Suitable for infrequent or regular use
- Fully automated
- Touch screen
- Maintenance free
- Small footprint - suitable for areas with limited space



Integrated, single-use reagent cartridge



MAINTENANCE FREE, PORTABLE HAEMATOTOLOGY TESTING

Specifications

Species:	Dog, Cat (more species in development)
Throughput:	Up to 15 tests/hour
Principle:	Impedance method for WBC/RBC/PLT test Cyanide-free colorimetric method for HGB test Immunonephelometry for CRP and SAA test
Sample Volume:	20µl
Sample Type:	Venous whole blood, capillary blood
Results Storage:	300,000
Printer:	Built-in thermal printer, external printer optional supported
Linearity Range:	WBC - (0.00~300.00)x10 ⁹ /L RBC - (0.00~8.50)x10 ¹² /L HGB - (0~250)g/L HCT - (0.0-75.0)% PLT - (0~4000)x10 ⁹ /L CRP - (0.2~320)mg/L SAA - (3~200)mg/L
Test Mode:	CBC, CBC+CRP, CBC+SAA

Parameters:	19 Parameters: WBC, LYM%, LYM#, MID%, MID#, GRA#, GRA%, RBC, HGB, HCT, MCV, MCH, MCHC, RDW-CV, RDW-SD, PLT, MPV, PDW, PCT 2 specific protein parameters: CRP, SAA 3 histograms for WBC, RBC, PLT 10.4" touch screen
Display:	10.4" touch screen
Dimensions:	270 (W) x 385 (H) x 300 (D) mm
Weight:	≤13kg
Repeatability (CV):	WBC - ≤4% (3.50~15.00)x10 ⁹ /L RBC - ≤2% (3.50~6.50)x10 ¹² /L HGB - ≤2% (100~180)g/L HCT - ≤3% (35.0-50.0)% MCV - ≤3% (70~110)fL PLT - ≤8% (100~500)x10 ⁹ /L



+44 (0) 1204 669033 (Option 1)



sales@woodleyequipment.com



www.woodleyequipment.com



Old Station Park Buildings
St. John Street
Horwich
Bolton
Lancashire
BL6 7NY
UK

**"PASSIONATE ABOUT
LABORATORY DIAGNOSTICS"**

**WOODLEY
EQUIPMENT COMPANY LTD.**